

AUSTRALIA'S FAVOURITE KNITTING MAGAZINE!

# *creative* knitting

32

Amazing  
patterns

Great  
autumn  
knitting ideas

Knitting patterns  
for babies  
and kids

**PLUS** Beautiful creations  
for you to make

Scarves, dresses, tops, beanies and more

FULL OF TIPS AND TECHNIQUES



# HANDMADE HOME

*Handmade with love in  
Patons Cotton Blend 8 ply*



*This pattern and more are available in Handmade Home book 358*

Phone 1800 337 032 for your nearest stockist or visit  
[patonsyarns.com.au](http://patonsyarns.com.au) [f/auspinners](https://www.facebook.com/auspinners) [i/auspinners](https://www.instagram.com/auspinners)





# WELCOME

to the spring edition of Creative Knitting!

We have a fabulous selection of autumn ideas for you to knit in this issue of Creative Knitting. We have some beautiful ideas for you to create, using the latest patterns and yarns, so your handmade creations will be perfectly stylish for the season. Every pattern comes complete with step-by-step instructions and detailed photography to make your knitting experience even more pleasureable.

There are also some great ideas for the kids and the home too. So knit some fabulous patterns for the kids and little ones for the autumn season or make a cushion or a bed throw to show off your knitting skills and have your creations around you all the time.

Please send us a photograph of any patterns you have made from the magazine, as we would love to see your work. So get your photos in for the chance to win some great prizes. Send your photos and a brief description, including the issue you have knitted from to Creative Knitting Magazine, PO Box 8035, Glenmore Park 2745 or an email to [editorial@wpc.com.au](mailto:editorial@wpc.com.au).

So relax, sit back and enjoy,

Happy Knitting!

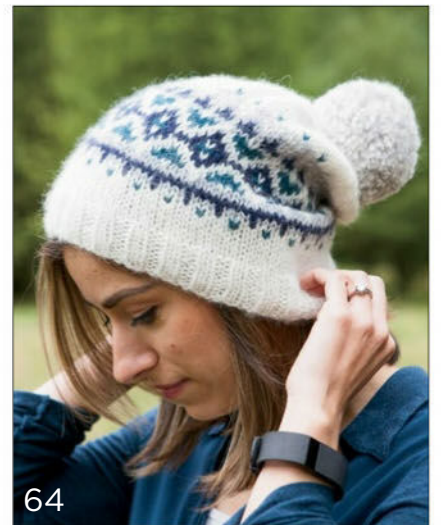
*Simon*

Simon and the Team



[www.biggandesign.com](http://www.biggandesign.com)

**Premium First Cross  
4ply & DK Australian Merino  
in 64 Brilliant Colours**





# CONTENTS



## WOMEN

*Luxurious knits for ladies with style*

- 6 Empire Coat
- 11 Cabaret Scarf
- 12 Checked Cowl
- 14 Beanie, Mitts and Cowl
- 18 Infinite Sheep Scarf
- 21 Double Moss Beanie
- 32 Cotton T-Shirt
- 34 Chunky Chain Cowl
- 36 Zagged Cowl
- 38 Crochet Skirt
- 41 Aran Shawl
- 60 Puff Skirt
- 62 Shifting Sands Cabled Scarf
- 64 Glacier Peak Hat
- 66 Mossy Lace Cowl
- 68 Fisherman's Rib Beret and Mitts

## KIDS

*Adorable, fun knits from babies to teens*

- 22 Hat, Cowl and Wrist Warmer
- 24 Baby's Sleeping Bag
- 28 Flared Three Tone Top
- 20 Aran Cardi
- 48 Jacket and Head Band
- 50 Baby Blanket
- 52 Cropped Jacket



## REGULARS

- 63 Subscribe
- 70 Glossary
- 76 Book Store
- 80 Store Directory
- 82 Next Issue

## HOME *Accessorise with style*

- 27 Neon Trim Pillow
- 30 Crochet Bucket
- 54 Infinite Rainbow Throw.
- 58 Lion toy





# EMPIRE COAT

*A fitted coat with soft empire shaping and wide Garter stitch edging on bodice and cuffs.  
Decorative cables sit above shaped pockets.*

## STITCH GUIDE ONE ROW BUTTONHOLE (OVER 4 STS)

1. Bring yarn to front, slip 1 stitch purlwise, bring yarn to back.
2. Slip 1 stitch purlwise, pass the first slipped stitch over the second. (Repeat this part 2 more times, passing over 3 stitches total). Place the last stitch back on left hand needle. Turn work.
3. With yarn in back, cast on 4 stitches (for the 3 stitches you bound off, plus 1) using the cable cast-on method: Knit into gap between last two stitches on left hand needle and place knitted stitch onto left hand needle by slipping it knitwise.
4. Turn work so RS is facing. Bring yarn to back, slip first stitch off left hand needle onto right hand needle and pass last cast on st over.

## CABLE PATTERN OVER 16 STS.

**Row 1:** RS – P2, k12, p2.

**Row 2:** K2, p12, k2.

**Rows 3 to 10:** K the k sts and p the p sts.

**Row 11:** P2, 3/3 RC, 3/3 LC, p2.

## BACK

Using straight needles, cast on 115 (125, 135, 145) sts. Starting with a WS row, work 19 rows Garter st, ending with a WS row. Cont in St st until length (from beg) measures 32.5 (38.5, 45, 45) cm ending with a WS row.

## Shape Lower Bodice

**Next Row:** RS – Dec 1 st on either side as foll; K1, ssk, work to last 3 sts, k2tog, k1. Cont decreasing on every 8th row as set 5 (3, 1, 1) times more. 103 (117, 131, 141) sts. Work 7 rows without further shaping. (\*\*\*)

## Gathering

**Next Row:** RS – Dec 24 (28, 32, 32) sts as foll; K6 (5, 4, 9), \* sssk, k5, rep from \* 5 (6, 7, 7) times more, \*\* k3tog, k5, rep from \*\* 4 (5, 6, 6) times more, k3tog, k6 (5, 4, 9). 79 (89, 99, 109) sts. Work 5 rows without shaping.

## Shape upper bodice

**Next Row:** RS – Inc 1 st on either side as foll; K1, Kfb, k to last 3 sts, Kfb, k2. Cont increasing on every 6th row as set 3 times more, ending with a RS row. 87 (97, 107, 117) sts. Work 5 (7, 9, 11) rows without further shaping.

## Shape armholes

**Next Row:** RS – Cast off 3 (4, 5, 6) sts at beg of next 2 rows, 2 sts at beg of next 4 (4, 4, 6) rows and 1 st at beg of next 6 (8, 10, 10) rows. 67 (73, 79, 83) sts. Cont without further shaping until length (from beg of armhole shaping) measures 17.5 (18.5, 20, 21.5) cm, ending with a WS row.

## Shape neck and shoulders

**Next Row:** RS – Cast off 4 (4, 6, 6) sts, k until 14 (16, 16, 18) sts on right hand needle, place

remaining sts on a st holder, turn, cast off 2 sts, p to end.

**Next Row:** RS – Cast off 5 (6, 6, 7) sts, k to end.

**Next Row:** WS – Cast off 2 sts, p to end.

**Next Row:** RS – Cast off remaining 5 (6, 6, 7) sts. With RS facing, leave center 31 (33, 35, 35) sts on a st holder. Rejoin yarn to remaining sts and k to end.

**Next Row:** WS – Cast off 4 (4, 6, 6) sts, p to end.

**Next Row:** RS – Cast off 2 sts, k to end.

**Next Row:** WS – Cast off 5 (6, 6, 7) sts, p to end.

**Next Row:** RS – Cast off 2 sts, k to end.

**Next Row:** WS – Cast off remaining 5 (6, 6, 7) sts.

## LEFT FRONT

Using straight needles, cast on 62 (67, 72, 77) sts. Starting with a WS row, work 19 rows Garter st.

**Next Row:** RS – Knit.

**Next Row:** K9, p to end. Cont without shaping as set until length (from beg) measures 24cm, ending with a WS row.

## Shape lower bodice

**Next Row:** RS – K18 (20, 23, 25), place marker, work 1st

## MEASUREMENTS

TO FIT BUST	80-90	90-100	100-110	110-120CM
<b>FINISHED FIT</b>	<b>89</b>	<b>100</b>	<b>110</b>	<b>120CM</b>
GARMENT LENGTH	81.5	83.5	85.5	88CM
<b>SLEEVE LENGTH</b>	<b>58</b>	<b>58.5</b>	<b>61.5</b>	<b>62.5CM</b>



## SKILL LEVEL



advanced

## WHAT YOU'LL NEED

**Yarn**

16, 19, 21, 23 balls 50g  
Jo Sharp DK wool in 913  
Ironwork  
3 buttons approx 2.5cm  
diam.

**Needles and Tools**

4.50mm knitting needles  
4.50mm circular needle  
80cm  
Stitch holders  
Stitch markers  
Cable needle  
Wool sewing needle

**Tension**

19.5 sts by 26 rows over  
St st on 4.50mm needles  
to 10cm

**Special abbreviations**

3/3 RC - Slip 3 sts onto  
cable needle and hold at  
back of work, knit next 3  
sts from left hand needle,  
then knit 3 sts from cable  
needle.

3/3 LC - Slip 3 sts onto  
cable needle and hold at  
front of work, knit next 3  
sts from left hand needle,  
then knit 3 sts from cable  
needle.

sssk - Slip 3 sts  
individually knitwise to  
RH needle, knit the 3  
slipped sts together from  
left to right (dec 2 sts)

Kfbf - Knit into front,  
back and front of knit  
stitch (increases 2 sts)





## EMPIRE COAT

row of cable pattern over 16 sts, place marker, cont to end. Work 30 rows of cable pattern between markers as set. At the same time (Note: Cable and side decreases are worked simultaneously for first size only). When length (from beg) measures 32.5 (38.5, 45, 45) cm, dec 1 st on the next RS row as foll; K1, ssk, work to end. Cont

decreasing on every 8th row as set 5 (3, 1, 1) times more. 56 (63, 70, 75) sts. Work 7 rows without further shaping. (\*\*\*)

### Gathering

**Next Row:** RS – Dec 12 (14, 16, 16) sts as foll; \* K1 (0, 1, 3), \* sssk, k5, rep from \* 4 (5, 6, 6) times more, sssk, k to end. 44 (49, 54, 59) sts.

Work 5 rows without shaping.

### Shape upper bodice

**Next Row:** RS – Inc 1 st on the right side of work as foll; K1, Kfb, work to end. Cont increasing on every 6th row as set 3 times more, ending with a RS row. 48 (53, 58, 63) sts.

Work 5 (7, 9, 11) rows without further shaping.

### Shape armhole and neck

**Note: Read before cont to knit.**

Cast off 3 (4, 5, 6) sts at beg of next (RS) row (armhole edge), 2 sts at beg of every RS row 2 (2, 2, 3) times and 1 st 3 (4, 5, 5) times. At the same time, when length (from beg of armhole shaping) measures 3 (4, 4.5, 5.5) cm with 5 (7, 9, 11) rows and ending with a RS row, work neck shaping as foll;

**Next Row:** WS – K9, place these first 9 sts on a st holder, cast off 3 (4, 4, 4) sts, cont to end. Then cast off 3 sts at beg of every WS row (neck edge) once, 2 sts 2 (2, 3, 3) times and 1 st 5 (5, 4, 4) times. 14 (16, 18, 20) sts. Cont without further shaping until length (from beg of armhole shaping) measures 17.5 (18.5, 20, 21.5) cm, ending with a WS row.

### Shape shoulder

**Next Row:** RS – Cast off 4 (4, 6, 6) sts at beg of next row and 5 (6, 6, 7) sts at beg of every RS row 2 times.

### RIGHT FRONT

Using straight needles, cast on 62 (67, 72, 77) sts. Starting with a WS row, work 19 rows Garter st ending with a WS row.

**Next Row:** RS – Knit.

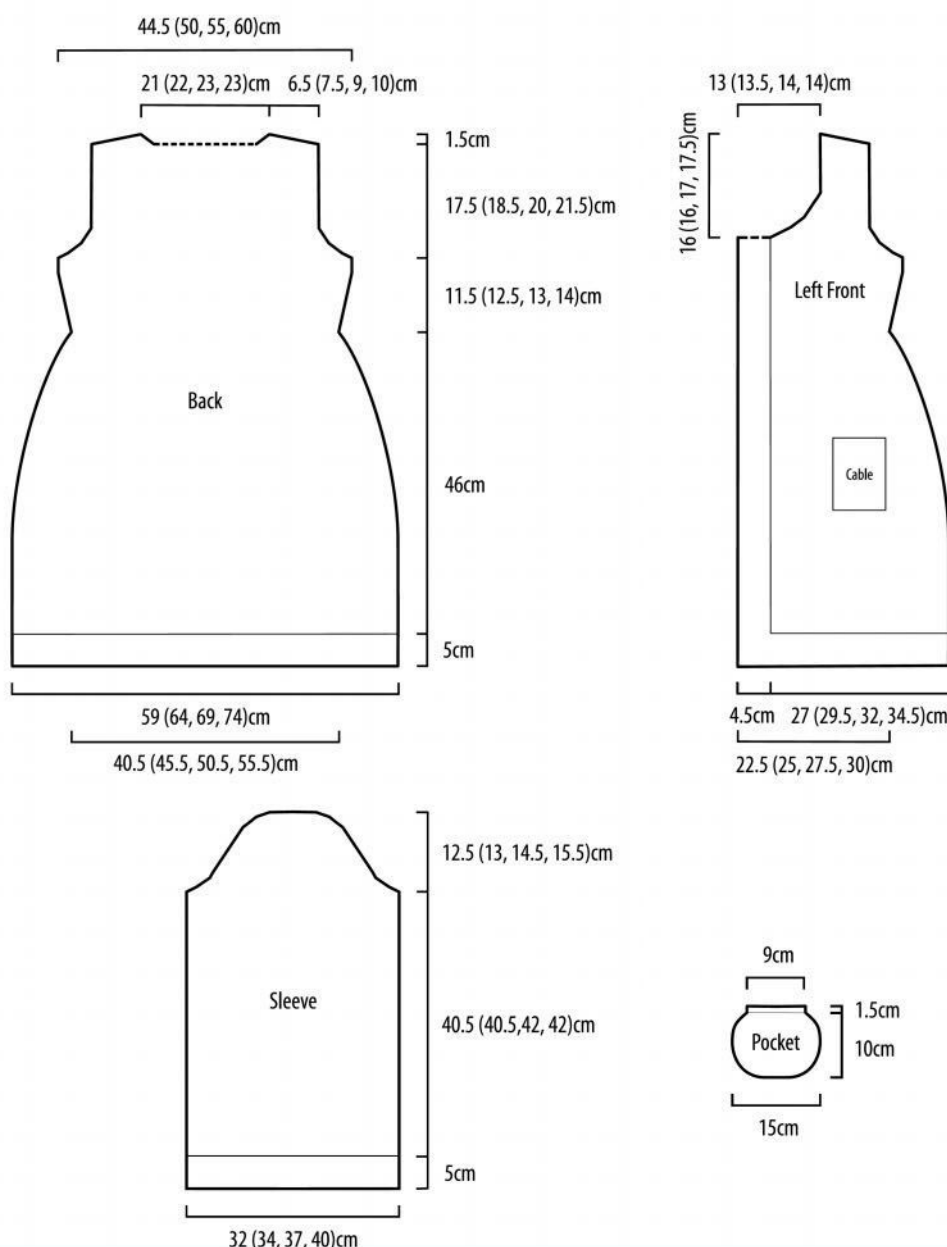
**Next Row:** P to last 9 sts, k9. These 2 rows form pattern repeat.

Cont without shaping in patt repeat as set, until length (from beg) measures 24cm, ending with a WS row.

### Shape lower bodice

**Next Row:** RS – K28 (31, 33, 36) place marker, work 1st row of 16 stitch cable pattern, place marker, work to end.

## EMPIRE COAT DIAGRAMS



Work 30 rows of cable pattern between markers over 16 sts as set. At the same time

**Note: Cable and side decreases are worked simultaneously for first size only.**

When length (from beg) measures 32.5 (38.5, 45, 45) cm, dec 1 st on the left side of work on next RS row as foll; Work to last 3 sts, k2tog, k1. Cont decreasing on every 8th row as set 5 (3, 1, 1) times more. 56 (63, 70, 75) sts.

Work 7 rows without further shaping. (\*\*\*)

### Gathering

**Next Row:** RS – Dec 12 (14, 16, 16) sts as foll; K12 (12, 11, 13) \* k3tog, k5, rep from \* 4 (5, 6, 6) times more, k3tog, k to end. 44 (49, 54, 59) sts.

### Shape upper bodice, armhole and neck

**Note: Read before cont to knit.**

Work 3 rows without shaping.

**Next Row:** buttonhole RS – K3, make a buttonhole over 4 sts using one row buttonhole method (foll instructions above), knit to end.

Work 21 (23, 25, 27) rows.

**Next Row:** RS – Make 2nd buttonhole in the same way as 1st buttonhole.

Work 11 (13, 15, 17) rows.

**Next Row:** RS – Don't break yarn, place first 9 sts on a st holder, join another ball of yarn, cast off next 3 (4, 4, 4) sts and work to end. Then cast off 3 sts at beg of next RS row (neck edge) once, 2 sts 2 (2, 3, 3) times and 1 st 5 (5, 4, 4) times. At the same time, on 6th row from gathering (RS) inc 1 st on the left side of work as foll; Work to last 3 sts, Kfb, k2. Cont increasing on every 6th row as

set 3 times more, ending with a RS row. 48 (53, 58, 63) sts.

Work 6 (8, 10, 12) rows without further shaping.

**Next Row:** WS – Cast off 3 (4, 5, 6) sts at beg of row (armhole edge), then 2 sts at beg of every WS row 2 (2, 2, 3) times and 1 st 3 (4, 5, 5) times. 14 (16, 18, 20) sts.

Cont without further shaping until length (from beg of armhole shaping) measures 17.5 (18.5, 20, 21.5) cm, ending with a RS row.

### Shape shoulder

**Next Row:** WS – Cast off 4 (4, 6, 6) sts at beg of next row and 5 (6, 6, 7) sts at beg of every WS row 2 times.

### SLEEVES (MAKE 2)

Using straight needles, cast on 62 (66, 72, 78) sts.

Starting with a WS row, work 19 rows Garter st, ending with a WS row.

Cont without shaping in St st until length (from beg) measures 40.5 (40.5, 42, 42) cm, ending with a WS row.

### Shape cap

**Next Row:** RS – Cast off 3 (4, 5, 6) sts at beg of next 2 rows, 2 sts at beg of next 4 (4, 4, 6) rows, 1 st at beg of next 20 (22, 26, 26) rows, 2 sts at beg of next 4 rows, then 4 sts at beg of next 2 rows. Cast off remaining 12 sts.

### POCKETS (MAKE 2)

Using straight needles, cast on 11 sts.

**Row 1:** WS – Purl.

**Next Row:** Inc 18 sts as foll; K1, (Kfbf) 9 times, k1. 29sts. Work without shaping in St st until length (from beg) measures 10 cm, ending with a WS row.





## EMPIRE COAT



**Next Row:** RS – Dec 12 sts as foll; (Sssk, k2) 2 times, sssk, k3, (k3tog, k2) 2 times, k3tog. 17sts.

Work 3 rows Garter st.

Cast off all sts.

### MAKING UP

Press pieces gently on WS with a warm iron over a

damp cloth. With RS facing, using edge-to-edge st, set in sleeves, join sleeve and side seams. Sew on pockets under the cables on either side.

With RS facing, using circular needle and beg at right front neck edge, knit 9 sts from holder, pick up and knit 38 (39, 41, 43) sts along right side front

neck, 5 sts along right side back neck, knit 31 (33, 35, 35) sts from back neck holder, pick up and knit 5 sts along left side back neck and 38 (39, 41, 43) sts along left side front neck and knit last 9 sts from holder. 135 (139, 145, 149) sts.

Work 5 rows Garter st, ending with a WS row.

**Next Row:** Dec 4 sts on either side of front neck and 2 sts on either side of back neck as foll; K12, (k2tog, k3) 3 times, k2tog, k18 (19, 21, 23), k2tog, k3, k2tog, k27 (29, 31, 31) sts, k2tog, k3, k2tog, k18 (19, 21, 23), (k2tog, k3) 3 times, k2tog, k12. 123(127, 133, 137) sts.

Work 3 rows Garter st, ending with a WS row.

**Next Row:** K2, make 3rd

buttonhole in the same way as first two buttonholes, cont to end.

Work 3 rows Garter st, ending with a WS row.

**Next Row:** Dec 4 sts on either side of front neck and 2 sts on either side of back neck as foll; K12, (k2tog, k2) 3 times, k2tog, k17 (18, 20, 22), k2tog, k2, k2tog, k25 (27, 29, 29) sts, k2tog, k2, k2tog, k17 (18, 20, 22), (k2tog, k2) 3 times, k2tog, k12. 111 (115, 121, 125) sts.


Work 5 rows Garter st ending with a WS row.

Cast off all sts.

Sew on buttons opposite buttonholes. Press seams.


**Jo Sharp**

[www.josharppatterns.com](http://www.josharppatterns.com)



Visit us at 1353 Malvern Road, Malvern Road  
or shop online safely at: [www.wondoflex.com.au](http://www.wondoflex.com.au)  
**Phone: (03) 9822 6231**

online store now open  
free australia-wide shipping on all orders over \$100



the wool inn  
knitting and crochet specialists  
[the-wool-inn.com.au](http://the-wool-inn.com.au) 450 high st penrith nsw australia

# CABARET SCARF

*A lovely 8ply scarf in crochet*



## WORKING PATTERN

Make 218 ch

**Row 1:** 1tr in 10th ch from hook, \*3ch, miss 3ch, 1tr in next ch. Rep to end.

**Row 2:** 4ch, miss 1tr and 3ch, (1tr 3ch 1tr) in next tr, \*miss 3ch (1tr, 3ch 1tr) in next tr. Rep to end. 1ch, miss 3ch, 1tr in turning ch.

**Row 3:** 6ch, 1tr in 3ch loop \*3ch, 1tr in 3ch loop, rep to end, working last tr in 2nd ch of turning ch.

Rows 2 and 3 form pattern.

Work pattern until scarf measures approx. 25cm, ending on a Row 3.

## MAKING UP

Finish off and sew in ends.

Block if you want, but not really necessary.

## Banksia Yarns

Shop 7 Magnolia Mall,  
285 Windsor St

Richmond NSW

Ph: 0401 279 853

[www.banksiayarns.com.au](http://www.banksiayarns.com.au)

## SKILL LEVEL



beginner

## WHAT YOU'LL NEED

### Yarn

1 ball 100g Stylecraft  
Cabaret DK

### Needles and Tools

5.00mm crochet hook

### Tension

Not critical - looser than  
normal for this yarn

## MEASUREMENTS

SIZE 150CM X 25CM APPROX  
UNSTRETCHED



# CHECKED COWL

*Design by Knits Picks*

## DESIGN NOTES

Stranded bulky yarn makes for a super-dense, super-warm cowl that will take the chill out of the worst winter day. It is worked in the round and grafted end-to-end.

## Provisional Cast On

For help casting on provisionally, please refer to the following tutorial: <http://tutorials.knitpicks.com/wptutorials/traditional-provisional/>

## Kitchener Stitch

For information on Kitchener Stitch, please refer to the following tutorial: <http://tutorials.knitpicks.com/wptutorials/kitchener-stitch/>

## CHECKED COWL

With C1, cast on 52 sts using Provisional cast on. Place marker and join to work in the round. Begin working from either 4-Color Check charts, changing colours as necessary and repeating the 4-stitch repeat 13 times around. Rep 1 - 12 rounds 10 times. Rep 1-11 rounds once more.

## MAKING UP

Trim colour A, leaving a 1-yard tail.

Place stitches from cast on needle. Line up the cast on edge with the live stitches. With a yarn needle and tail, use Kitchener Stitch to graft the two ends together.

## Knit Picks

[www.KnitPicks.com](http://www.KnitPicks.com)

Ph: 1800 106 750

## MEASUREMENTS

CIRCUMFERENCE 72CM

WIDE 16.5CM

## SKILL LEVEL



intermediate

## WHAT YOU'LL NEED

### Yarn

#### Neutral Version

1 ball each 50g Knit Picks Wonderfluff  
C1 Wellies Heather 27197  
C2 Cobblestone Heather 27187  
C3 Finnley Heather 27188  
C4 Bare 27186

#### Jewel Version

1 ball each 50g Knit Picks Wonderfluff  
C1 Goji Heather 27191  
C2 Royal Heather 27190  
C3 Turquoise Heather 27195  
C4 Atlantic Heather 27193

### Needles and Tools

6.50 mm set double pointed needles or 6.50mm circular needle 100cm  
Spare needles in same size for grafting  
Yarn needle  
Stitch marker

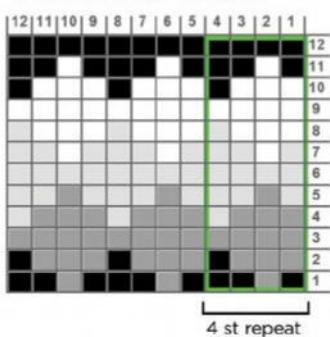
### Tension

16 sts by 18 rounds St st in the round on 6.50mm needles, blocked to 10cm



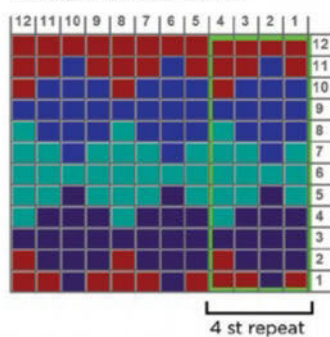


4-Color Check - Neutral



- A Wellies Heather
- B Cobblestone Heather
- C Finnley Heather
- D Rare

4-Color Check - Jewel



- A Goji Heather
- B Royal Heather
- C Turquoise Heather
- D Atlantic Heather



## SKILL LEVEL



## WHAT YOU'LL NEED

### Yarn

Beanie: 3 balls 65gm

Cleckheaton 8ply  
superfine merino

### Mitts

2, 3 balls 65gm

Cleckheaton 8ply – Mitts  
standard, long length

### Cowl

2 balls 65gms

Cleckheaton Australian

Superfine Merino 8ply

1 ball 25gms Rowan

Kidsilk Haze

### Needles and Tools

Beanie

3.25mm set double

pointed needles

4.00mm set double

pointed needles

Wool sewing needle

Pom-pom maker

### Mitts

3.75mm knitting needles

3.25mm knitting needles

Wool sewing needle

### Cowl

4.50mm circular needle

60cm length

Ring marker

Wool sewing needle

### Tension

Beanie: 22sts by 30  
rows over stocking st  
on 4.00mm needles to  
10cm

Mitts: 33sts over Brioché  
pattern on 3.75mm  
needles to 10cm

Cowl: Not critical to  
project

# BEANIE, MITTS AND COWL

*Brioche mitts a slouch aran beanie paired beautifully together with a  
an easy knit cowl. Design by Cleckheaton.*

## STITCH GUIDE

### BEANIE

Using set of 3.25mm dpn,  
cast on 110sts and divide as  
evenly as possible between  
3 needles. Join to work in  
rounds taking care not to twist  
cast on edge.

**Round 1:** \* K1, p1, rep to from  
\* to end.

Rep last round until work  
measures 15cm from beg.

**Next Round:** inc in first st, \*  
rib 3, inc in next st, rib 4, inc in  
next st, rep from \* to last st,  
p1. 135sts

Change to 4.00mm dpn.

### Beg Pattern

**Round 1:** \* k1tbl, p3, twf, p2,  
twb, p3, k1tbl, p13 rep from \*  
to end.

**Round 2:** \* k1, p3, k2, p2, k2,  
p3, (k1, p1) 3 times, k1, p7, rep  
from \* to end.

**Round 3:** \* k1tbl, p2, (c2r, r2l)  
twice, p2, k1tbl, p1, (c2l) 3  
times, p3, bobble, p2, rep from  
\* to end.

**Round 4:** \* (k1, p2) twice, k2,  
p2, k1, (p2, k1) twice, (p1, k1)  
twice, p6, rep from \* to end.

**Round 5:** \* k1tbl, p2, k1, p2,  
k2, p2, k1, p2, k1tbl, p2, (c2l) 3  
times, p5, rep from \* to end.

**Round 6:** \* (k1, p2) twice,  
k2, (p2, k1) twice, p3, (k1, p1)  
twice, k1, p5, rep from \* to  
end.

**Round 7:** \* k1tbl, p2, k1, p2,  
k2, p2, k1, p2, k1tbl, p3, (c2l) 3  
times, p4, rep from \* to end.

**Round 8:** \* k1, p3, k2, p2, k2,  
p3, k1, p4, (k1, p1) twice, k1,  
p4, rep from \* to end.

**Round 9:** \* k1tbl, p3, twf,  
p2, twb, p3, k1tbl, p4, (c2l) 3  
times, p3, rep from \* to end.

**Round 10:** \* k1, p3, k2, p2, k2,  
p3, k1, p5, (k1, p1) twice, k1, p3  
rep from \* to end.

**Round 11:** \* k1tbl, p2, (c2r, c2l)  
twice, p2, k1tbl, p2, bobble, p2,  
(c2l) 3 times, p2, rep from \*  
to end.

**Round 12:** \* (k1, p2) twice,  
k2, (p2, k1) twice, p6, (k1, p1)  
twice, k1, p2, rep from \* to  
end.

**Round 13:** \* k1tbl, p2, k1, p2,  
k2, p2, k1, p2, k1tbl, p6 (c2l) 3  
times, p1, rep from \* to end.

**Round 14:** \* k1, p3, k2, p2, k2,  
p3, k1, p7 (k1, p1) 3 times, rep  
from \* to end.

Rounds 1 to 14 incl form  
pattern.

Work a further 28 rounds.

### Shape Crown

**Round 1:** \*k1tbl, p2tog, p1, twf,  
p2, twb, p1, p2tog, k1tbl, p13,  
rep from \* to end. 125sts.

**Round 2:** \* k1, (p2, K2) twice,  
p2, (k1, p1) 3 times, k1, p7, rep  
from \* to end.

**Round 3:** \* k1tbl, p1, (c2r, c2l)  
twice, p1, k1tbl, p1, (c2l) 3

times, p2tog, p4, rep from \*  
to end.

**Round 4:** \* k1, p1, k1, p2, k2,  
p2, k1, p1, k1, p2, (k1, p1) twice,  
k1, p5, rep from \* to end.

**Round 5:** \* k1tbl, p1, p2tog, p1,  
k2, p1, p2tog, p1, k1tbl, p2tog,  
(c2l) 3 times, p4, rep from \* to  
end. 105sts.

**Round 6:** \* k1, p3, k2, p3, k1,  
p2, (k1, p1) twice, k1, p4, rep  
from \* to end.

**Round 7:** \* k1tbl, p1, p2tog, k2,  
p2tog, p1, k1tbl, p2tog, (c2l) 3  
times, p3, rep from \* to end.

**Round 8:** \* k1, p2, k2, p2, k1,  
p2, (k1, p1) twice, k1, p3, rep  
from \* to end.

**Round 9:** \* k1tbl, p1, k2tog,  
sl 1, k1, pssso, p1, k1tbl, (c2l) 3  
times, p2, rep from \* to end.  
75sts.

**Round 10:** \* k1, p1, k2, p1, k1,  
p2, (k1, p2) twice, k1, p2, rep  
from \* to end.

**Round 11:** \* k1tbl, p1, k2tog,  
p1, k1tbl, p2tog, (c2l) 3 times,  
p1, rep from \* to end. 65sts.

**Round 12:** \* (k1, p1) twice, k1,  
p2, (k1, p1) 3 times, rep from  
\* to end.

**Round 13:** \* k1tbl, p2tog, p1,  
k1tbl, p2tog, (c2l) 3 times, rep  
from \* to end. 55sts.

**Round 14:** p1, (p2tog) 27  
times. 28sts.

**Round 15:** (k2tog) 14 times.  
14sts.

Break off yarn thread end



MEASUREMENTS

BEANIE	TO FIT HEAD 56CM
MITTS	TO FIT HAND CIRCUMFERENCE 18CM
	STANDARD LENGTH 30CM
	LONG LENGTH 45CM
COWL	FINISHED CIRCUMFERENCE 98CM
	LENGTH APPROX. 26CM





through rem sts, draw up tightly and fasten off securely.

## MAKING UP

Do not press. Using a large pom-pom maker or 2 circles of cardboard 12cm in diameter with 4cm centre hole, make a pom-pom and attach securely to crown.

## MITTS LEFT MITT

Using 3.75mm needles cast on 34sts loosely.

**Foundation Row:** WS – k2, \*Sy, k1, rep from \* to end. 50sts

## Beg Brioche Pattern

**Row 1:** k1, \* k2tog, (Sy sts), Sy,

rep from \* to last st, k1. Rep last row to form Brioche patt (16 knit columns) Cont in patt until mitt measures 14cm for standard length or 29cm for long length from beg, work last row on WS. Change to 3.25mm Cont in patt until mitt measure 19cm for standard length or 34cm for long length from beg, work last row on WS. Change to 3.75mm needles \*\*

## Beg Diamond Patt

**Row 1:** k1, k2tog, Sy, Ldec, k2tog, Sy, 2inc, Sy, k2tog, Sy, 2inc, Sy, k2tog, Sy, Rdec, patt to end. 48sts

**Row 2:** k1, (k2tog, Sy) 8 times, k1, (Sy, k2tog) twice, Sy, k1, patt to end. 50sts

Work 6 rows Brioche Pattern.

**Row 9:** k1, k2tog, Sy, Ldec, (Sy, k2tog) 3 times, Sy, 2inc, Sy Rdec, patt to end. 48sts

**Row 10:** k1, (k2tog, Sy) 8 times, k1 (Sy, k2tog) 4 times, Sy, k1, patt to end. 50sts

Work 6 rows of Brioche pattern

**Row 17:** k1, k2tog, Sy, Ldec, (Sy, k2tog) 5 times, Sy, Rdec, patt to end. 44sts

Work 9 rows of Brioche pattern.

**Row 27:** k1, k2tog, Sy, 2inc, (Sy, k2tog) 5 times, Sy, 2inc, patt to end. 48sts

**Row 28:** k1, (k2tog, Sy) 7 times, k1, (Sy, k2tog) 6 times, Sy, k1 patt to end. 50sts

Work 6 rows of Brioche pattern.

**Row 35:** k1, k2tog, Sy, 2inc, Sy, Ldec, (Sy, k2tog) 3 times, Sy, Rdec, Sy, 2inc, patt to end. 48sts

**Row 36:** As Row 28. Work 6 rows of Brioche pattern.

**Row 43:** K1, k2tog, Sy, 2inc, Sy, k2tog, Sy, Ldec, Sy, k2tog, Sy, Rdec, Sy, k2tog, Sy 2inc, patt to end. 48sts

**Row 44:** Row 36: As Row 28. 50sts completing diamond pattern.

Work in Brioche pattern as before until mitt measure 30cm for standard length or 45cm for long length from beg, working last row on RS.

Next Row: \* P1, k2og, rep from \* to last 2 sts, p1, k1.

Cast off very loosely in rib.

## RIGHT MITT

Work as for left mitt to \*\*

## Beg Diamond Patt

**Row 1:** k1, (k2tog, Sy) 6 times, Ldec, Sy, k2tog, Sy, 2inc, Sy, k2tog, Sy, 2inc, Sy, k2tog, Sy, Rdec, Sy, k2tog, Sy, k1. 48sts.

## Special abbreviations

Sy – yarn front, slip 1 purlways, yarn over needle ready to K2tog, or K1 as instructed  
2inc – (k2tog, yfwd, k2tog) all in same 2 sts (Sy sts) ... 3 sts  
Ldec – Sl 2tog knitways (Sy sts), K3tog, p2sso  
Rdec – Sl 2tog knitways (Sy sts), k1, p2sso, slip st rem back to left hand needle, pass foll 2sts (Sy sts) tog over this st, then slip st back to right hand needle.

k1tbl – knit 1 through back of loop  
twf – knit into front of 2nd st on left hand needle, then knit into from of first st, slip both sts of needle tog.  
twb – knit into back of 2nd st on left hand needle, then knit into from of first st, slip both sts of needle tog.  
c2r – knit into front of 2nd st on left hand needle, then purl into front of first st, slip both sts off needle tog.  
c2l – purl into back of 2nd st on left hand needle, then knit into front of first st, slip both sts off needle tog.  
Bobbie – (k1, yfwd, k1, yfwd, k1) all into next st, turn, p5, turn, sl 2, k3tog, p2sso.

**Row 2:** k1, (k2tog, Sy) 4 times, k1, (Sy, k2tog) twice, Sy, k1, patt to end. 50sts.

Work 6 rows Brioche Pattern.

**Row 9:** k1, (k2tog, Sy) 6 times, Ldec, Sy, 2inc, (Sy, k2tog) 3 times, Sy, 2inc, Sy, Rdec, patt to end. 48sts.

**Row 10:** k1, (k2tog, Sy) 3 times, k1, (Sy, k2tog) 4 times, Sy, k1, patt to end. 50sts.

Work 6 rows Brioche Pattern.

**Row 17:** k1, (k2tog, Sy) 6 times, Ldec, (Sy, k2tog) 5 times, Sy, Rdec, patt to end. 44 sts.

Work 9 rows Brioche Pattern.

**Row 27:** k1, (k2tog, Sy) 6 times, 2inc, (Sy, k2tog) 5 times, Sy, 2inc, patt to end. 48sts.

**Row 28:** k1, (k2tog, Sy) twice,

k1, (Sy, k2tog) 6 times, Sy, k1, patt to end. 50sts.

Work 6 rows Brioche Pattern.

**Row 35:** k1, (k2tog, Sy) 6 times, 2inc, Sy, Ldec, (Sy, k2tog) 3 times, Sy, Rdec, Sy, 2inc, patt to end. 48sts.

**Row 36:** As Row 28.

Work 6 rows Brioche Pattern.

**Row 43:** k1, (k2tog, Sy) 6 times, 2inc, Sy, k2tog, Sy, Ldec, Sy, k2tog, Sy, Rdec, Sy, k2tog, Sy, 2inc, patt to end. 48sts.

**Row 44:** As Row 28. 50sts completing diamond pattern. Work in Brioche pattern as before until mitt measure 30cm for standard length or 45cm for long length from beg. working last row on RS.

**Next Row:** \* P1, k2og, rep

from \* to last 2 sts, p1, k1. Cast off very loosely in rib.

## COWL

Using Australian Superfine Merino 8ply cast on 170sts, pay special attention not to twist the cast on edge, join the tail and the working yarn with a knot, DO NOT TURN work in rounds not across. Place a ring marker at this point (this will be the beginning of the round), when you reach the marker move it up each row so that you know where the beginning of the round is. Do not cut the yarns at the end of each stripe, instead weave the unused yarn up along with the working yarn.

## Pattern sequence

\*\*Purl 4 rounds with Australian Superfine Merino 8ply  
Knit 6 rounds with Kidsilk Haze \*\*  
Rep from \*\* to \*\* 11 times or until desired length.  
Purl 4 rounds with Australian Superfine Merino 8ply  
With a larger needle cast off stitches loosely purlwise using Australian Superfine Merino 8ply  
Sew in ends.

## The Wool Inn

Shop 14 NK Centre  
450 High St, Penrith  
Ph: 02 4732 2201  
[www.the-wool-inn.com.au](http://www.the-wool-inn.com.au)

*Janique of Chelsea*

CRAFT SUPPLIES • GIFTS • HOMEWARES • FASHION

**Specialising in:**

- Knitting yarn and needles
- Tapestries and threads
- Haberdashery, beads, trims and accessories

We have the highest quality products and advice for our customers

402 Nepean Hwy  
Chelsea Vic 3196  
Ph: 03 9776 1155  
Fax: 9585 5141

CLECKHEATON • FILATURA • NATURALLY • PANDA • PATONS • WENDY

**NEEDLE NOOK**

South Australia's widest range in knitting yarns, patterns and accessories.  
Beautiful yarns include wool, cotton, mohair, bamboo and more

WE'VE MOVED!  
4/453 Fullarton Rd  
Highgate SA 5063  
Ph: 08 8271 4670

Proud stockists of major brands.

Mail order & phone sales welcome.

[www.needlenook.com.au](http://www.needlenook.com.au)



# INFINITE SHEEP SCARF

*Design by Knit Picks*

## SKILL LEVEL



advanced

## WHAT YOU'LL NEED

### Yarn

4 x balls 50gm Knit Picks  
Capra DK C1 Platinum  
24965  
2 x balls 50gm Knit Picks  
Capra DK C2 Timber  
24964  
1 x ball 50gm Knit Picks  
Capra DK C3 Sagebrush  
26559  
2 x balls 50gm Knit Picks  
Capra DK C4 Cream  
24974  
1 x ball 50gm Knit Picks  
Capra DK C5 Caviar  
24963  
1 x ball 50gm Knit Picks  
Reverie C6 Natural 26113  
1 x ball 50gm Knit Picks  
Reverie C6 Porcini 26112  
Scrap yarn for provisional  
cast on

### Needles

4.00mm circular needle  
40cm  
Wool sewing needle  
2 stitch markers

### Tension

24 sts by 36 rows over  
basket weave stitch,  
blocked to 10cm.  
24 sts by 30 rows in  
stockinette stitch,  
blocked to 10cm.

## STITCH GUIDE INFINITE SHEEP

**Notes: The Infinite Sheep scarf begins with a provisional cast on. It is worked in the round to the specified length (or as desired) and then the working end is grafted to the cast on end.**

Each 91-row repeat of the Infinite Sheep chart is 26.5cm in length. In the pattern you will work this repeat 4 times for an infinity scarf with a 106cm circumference. If you would like to lengthen the piece keep in mind that you may need more yarn. For each repeat you will use approximately: 35g of C1, 16g of C2, 8g of C3, 14g of C4, 4g of C5.  
During the colour work sections for the sheep you will need to be conscious of your wraps to prevent long floats pulling the stitch between the sheep. However, don't worry too much about how pretty the reverse side is. Once the ends grafted together you won't see the WS of the fabric.

### Provisional Cast On

For help casting on provisionally, please refer to the following tutorial:  
<http://tutorials.knitpicks.com/wptutorials/traditional-provisional/>

### Kitchener Stitch

For information on Kitchener Stitch, please refer to the following tutorial:  
<http://tutorials.knitpicks.com/wptutorials/kitchener-stitch/>

### INSTRUCTIONS

Using a provisional cast on and C3, cast on 98 sts and join in the round.  
Begin working the Infinite Sheep chart, repeating the

chart twice across the rnd. Work Rounds 1 to 91 a total of 4 times, or until desired length. On the final repeat do not work round 91.

### FINISHING

Gently, if your yarn allows for it, steam or iron the scarf flat so it gives the illusion of a double sided fabric instead of a tube. There should be one purl stitch at each side (right and left) to provide a "seam".









## INFINITE SHEEP SCARF



### Legend

- Knit with C3
- Purl with C3
- Knit using C1
- Purl with C1
- Knit in C2
- Purl with C2
- With C2, slip with yarn held back
- Knit with C6
- With C6, slip with yarn held back
- Knit with C5
- Purl with C5
- Knit with C4
- Knit with C7
- With C7, Slip with yarn held back

If your 49 cast on sts are on scrap yarn, place them on a spare circular needle now. Holding the 49 cast on sts and 49 working sts parallel, graft the ends together using the kitchener stitch and C3. Gently block the section you have just grafted.

### MAKING UP

The scarf will need to be steam blocked (or gently pressed with an iron, use a cloth between the iron and knitted piece). This may be easier before grafting the ends together. Make sure when blocking flat that the purl stitches (there will be two, one on the right and one on the left) are at the sides. These are the side "seams" of the piece. Gently block the section you have just grafted.

### Knit Picks

[www.KnitPicks.com](http://www.KnitPicks.com)

Ph: 1800 106 750

# DOUBLE MOSS BEANIE

*This beanie gives the novice knitter an opportunity to master circular needles and working 'in the round'. The pattern is an easy repeat texture and quick to knit.*

## STITCH GUIDE

**Design notes:** to make sure this beanie has plenty of "flop factor" that is: it will droop at the back, make sure your tension is very soft on the back section. For more flop, use larger needles.

## DOUBLE MOSS STITCH

**Round 1:** K2, p2 across the row.

**Round 2:** Repeat round 1, ending with p2.

**Round 3:** P2, k2 across the row.

**Round 4:** Repeat round 3, ending with k2.

Repeat these four rows throughout.

## PATTERN

Using 5.50mm circular needles, cast on 60sts, place marker, work 7cm in rounds of DM, moving marker prior to commencing each new round throughout.

Change to 7.00mm circular needles and cont DM until work (from beg) measures 27cm.

## Decrease as follows:

**Dec Round 1:** K1,\*yf, k4tog, rep from \* to last 3sts, yf, k3tog. 30sts.

**Dec Round 2:** K1, \*yf, k4tog, rep from \* to last st, k1. 16sts.

**Dec Round 3:** K1, \*K4tog, rep from \* to last 3sts, k3tog. 5sts.

Cut yarn, thread through rem 5 sts. Pull tight and secure.

**Jo Sharp**

[www.josharppatterns.com](http://www.josharppatterns.com)

## SKILL LEVEL



beginner

## WHAT YOU'LL NEED

### Yarn

3 balls 50gm Jo Sharp Silkroad Ultra in722 Cement

### Needles and Tool

5.50mm circular needles 40cm  
7.00mm circular needles 40cm  
1 stitch marker

### Tension

13.5 sts by 18 rows over Double Moss on 7.00mm circular needles to 10cm

### Special abbreviations

DM - Double Moss Stitch.



## MEASUREMENTS

ONE SIZE FITS ALL

DEPTH 30 CM DIAMETER 50 CM



# HAT, COWL AND WRIST WARMER

*Design by Gitta Schrade for Naturally Yarns*



## STITCH GUIDE

### HAT

With 3.75mm needles, cast on 104 (112) sts.

**Row 1:** RS - \*K2, p2; rep from \* to end.

**Row 2:** As row 1.

Rib for 5 (7) cm, end with a WS row.

Change to 4.00mm needles.

### Beg Main Pattern

**Rows 1, 3 and 5:** RS - \*P2, k2; rep from \* to end.

**Rows 2, 4 and 6:** As row 1.

## SKILL LEVEL



## WHAT YOU'LL NEED

### Yarn

2, 2 balls 50gm Loyal DK 8ply Hat in shade #939  
2, 3 balls 50gm Loyal DK 8ply Cowl in shade #939  
1, 2 balls 50gm Loyal DK 8ply Wrist Warmers in shade #939

### Needles

3.75mm knitting needles  
4.00mm knitting needles

### Tension

22 sts by 30 rows over Stst on 4.00mm needles to 10cm

HAND KNIT YARNS by

*Naturally*  
IT'S PURE  
NEW ZEALAND

[www.naturallyyarnsnz.com](http://www.naturallyyarnsnz.com)

## MEASUREMENTS

SIZE	8-10	12-14 YEARS
<b>HAT</b>	<b>46-49</b>	<b>50-54CM</b>
COWL	65	75CM
<b>COWL LENGTH</b>	<b>15</b>	<b>18</b>
WRIST WARMER LENGHT	18	21CM

**Rows 7, 9 and 11:** RS - \*K2, p2; rep from \* to end.

**Rows 8, 10 and 12:** As row 7. Rep these 12 rows 2 (3) times more.

### Shape Top

**Next Row:** RS - \*P2tog, k2; rep from \* to end. 78 (84) sts.

**Next Row:** \*P2, k1; rep from \* to end.

**Next Row:** \*P1, k2; rep from \* to end.

**Next Row:** \*P2, k1; rep from \* to end.

**Next Row:** RS - \*P1, k2tog; rep from \* to end. 52 (56) sts.

**Next Row:** \*P1, k1; rep from \* to end.

**Next Row:** K2tog across row. 26 (28) sts.

P1 row.

**Next Row:** K2tog across row. 13 (14) sts.

P1 row.

Break yarn, leaving longer end, draw end through rem sts, pull together, secure end.

Join back seam.

Make pom-pom of approx 6 (7) cm diameter and attach to top of hat.

### COWL

With 4.00mm needles, cast on 144 (164) sts.

**Row 1:** RS - \*K2, p2; rep from \* to end.

**Row 2:** As row 1.

Rib 8 more rows.

### Beg Main Pattern

**Rows 1, 3 and 5:** RS - \*P2, k2; rep from \* to end.

**Rows 2, 4 and 6:** As row 1.

**Rows 7, 9 and 11:** RS - \*K2, p2; rep from \* to end.

**Rows 8, 10 and 12:** As row 7.

Rep these 12 rows until piece measures approx 15 (18) cm from beg, end with a row 6 or 12 of patt.

Rep last row for 4 more rows.

Cast off loosely in patt.

Join seam.

### WRIST WARMER (MAKE 2)

With 3.75mm needles, cast on 48 (52) sts.

**Row 1:** RS - K1, p2; \*k2, p2; rep from \* to last st, k1.

**Row 2:** P1, k2; \*p2, k2; rep from \* to last st, p1.

Rep these 2 rows 4 (5) times more.

Change to 4.00mm needles.

### Beg Main Pattern

**Rows 1, 3 and 5:** RS - P1, k2; \*p2, k2; rep from \* to last st, p1.

**Rows 2, 4 and 6:** K1, p2; \*k2, p2; rep from \* to last st, k1.

**Rows 7, 9 and 11:** K1, p2; \*k2, p2; rep from \* to last st, k1.

**Rows 8, 10 and 12:** P1, k2; \*p2, k2; rep from \* to last st, p1.

Rep last 12 rows 2 (3) times more.

Change to 3.75mm needles.

Work in rows 1 & 2 of Main patt until piece measures 18 (21) cm from beg, end with a WS row.

Cast off loosely in patt.

### MAKING UP

Join the last worked 8 (10) rows of Main patt.

Skip next 3 (3.5) cm for thumb opening, then sew remaining seam.

**Wentworth Distributors NZ Ltd**

Free phone AU: 1800 150 542

Free phone NZ: 0800 738 998

[www.naturallyyarnsnz.com](http://www.naturallyyarnsnz.com)

## The Brightest Whitest Light!



Creating your next piece is more comfortable with an ultra-bright daylight™ lamp

- 345 Watt daylight™ light - see the true colours of your paint
- brightest daylight™ lamp available - maximum vision & comfort
- wide head - plenty of shadow-free light on your desk or work table

**345  
Watt  
daylight™**

[www.daylightcompany.com](http://www.daylightcompany.com)

A32500 - Triple Bright Light



# BABY'S SLEEPING BAG

*Design by Gitta Schrade for Naturally Yarns*

## SKILL LEVEL



intermediate

## WHAT YOU'LL NEED

### Yarn

4, 5 balls 50gm Loyal Baby Prints 4ply in shade #70298  
2 snap fasteners  
5 buttons - Incomparable Buttons: L165

### Needles and Tools

2.75mm knitting needles  
3.25mm knitting needles  
Stitch holders and markers

### Special Abbreviations

skp - slip 1 st, knit 1 st, pass slipped st over

### Tension

28 sts by 36 rows over Stst on 3.25mm needles to 10cm

HAND KNIT YARNS

by

*Naturally*  
IT'S PURE  
NEW ZEALAND

www.naturallyyarnsnz.com

## GETTING STARTED

For pattern print consistency knit all balls either from the inside or the outside.

## WORKING PATTERN BACK

With 3.25mm needles, cast on 99 (113) sts.

**Row 1:** RS – K1, \*p1, k1; rep from \* to end.

**Row 2:** WS – K1, \*p1, k1; rep from \* to end.

Rep these 2 rows twice more.

**Next Row:** RS – K to last 5 sts, patt 5.

**Next Row:** WS – Patt 5, p to end.

Rep last 2 rows until piece measures 10 (12) cm from beg, end with a WS row.

**\*\*Next Row:** RS – K5, skp, k to last 7 sts, k2tog, patt 5.

**Next Row:** WS – Patt 5, p to end.

**Next Row:** RS – K to last 5 sts, patt 5.

**Next Row:** WS – Patt 5, p to end.

Rep last 2 rows 3 times more. \*\*

Rep from \*\* to \*\* 10 (11) times more (= decreasing every 10 rows). 77 (89) sts.

**Next Row:** RS – K to last 5 sts, patt 5.

**Next Row:** WS – Patt 5, p to end.

Rep last 2 rows until piece measures 46 (52) cm from beg, end with a WS row.

**Next Row:** RS – K1 (2), (k5

(6), k2tog) 10 times; k1 (2), patt 5. 67 (79) sts.

**Next Row:** WS – Patt 5, p to end.

**Next Row:** RS – K to last 5 sts, patt 5.

**Next Row:** WS – Patt 5, p to end.

Rep last 2 rows until piece measures 50 (56) cm from beg, end with a WS row.

## Shape Armholes

Cast off 5 (6) sts beg next 2 rows.

Dec 1 st each end next 5 rows. 47 (57) sts

Stst straight until piece measures 56 (64) cm from beg, end with a WS row.

**Next Row:** RS – K1, \*p1, k1; rep from \* to end.

**Next Row:** WS – K1, \*p1, k1; rep from \* to end.

Rep these 2 rows twice more.

**Next Row:** RS – Patt 11 (15) sts, turn, on these sts only (leave rem sts on hold).

Patt 7 more rows.

Cast off in patt.

With RS facing return to sts on hold, rejoin yarn and cast off loosely next 25 (27) sts, patt to end.

Patt 7 more rows.

Cast off in patt.

Place 5 button markers along patterned edge, the first one 8 (10) rows from underarm edge, the last one 9 (11) cm from cast on edge and the rem 3 evenly in between.

## FRONT

With 3.25mm needles, cast on 111 (125) sts.

**Row 1:** RS – K1, \*p1, k1; rep from \* to end.

**Row 2:** WS – K1, \*p1, k1; rep from \* to end.

Rep these 2 rows twice more.

**Next Row:** RS – Patt 12, k to end.

**Next Row:** WS – P to last 12 sts, patt 12.

Rep last 2 rows until piece meas 9 (11) cm from beg, end with a WS row.

**Next Row:** RS – (make buttonhole) – Patt 5, cast off 3 sts, with 1 st already on needle, patt 3 more, k to end.

**Next Row:** WS – P99 (113), patt 4, cast on 3 sts, patt 5.

**Next Row:** RS – Patt 12, k to end.

## MEASUREMENTS

SIZE	0- 3	3- 6 MONTHS
FINISHED FIT	48	56CM
LOWER EDGE	70	80CM
LENGTH TO SHOULDER	60	68CM



**Next Row:** WS – P to last 12 sts, patt 12.

**\*\*Next Row:** RS – Patt 12, k5, skp, k to last 7 sts, k2tog, k5.

**Next Row:** WS – P to last 12 sts, patt 12.

**Next Row:** RS – Patt 12, k to end.

**Next Row:** WS – P to last 12 sts, patt 12.

Rep last 2 rows 3 times more. \*\*

Rep from \*\* to \*\* 10 (11) times more and at same time, work buttonholes opposite markers. 89 (101) sts.

**Next Row:** RS – Patt 12, k to end.

**Next Row:** WS – P to last 12 sts, patt 12.  
Keeping buttonhole placement correct, rep last 2 rows until piece measures 46 (52) cm from beg, end with a WS row.

**Next Row:** RS – Patt 12, k3 (4) sts, (k5 (6), k2tog) 10 times; k4 (5). 79 (91) sts.

**Next Row:** WS – P to last 12 sts, patt 12.

**Next Row:** RS – Patt 12, k to end.

**Next Row:** WS – P to last 12 sts, patt 12.  
Keeping buttonhole placement correct, rep last 2 rows until piece meas 50 (56) cm from beg, end with a WS row.



## BABY'S SLEEPING BAG

### Shape Armholes

**Next Row:** RS – Cast off 17 (18) sts, k to end.

**Next Row:** WS – Cast off 5 (6) sts.

Dec 1 st each end next 5 rows. 47 (57) sts

Stst straight until piece measures 53 (61) cm from beg, end with a WS row.

**Next Row:** RS – K1, \*p1, k1; rep from \* to end.

**Next Row:** WS – K1, \*p1, k1; rep from \* to end.

Rep these 2 rows twice more.

**Next Row:** RS – Patt 11 (15) sts, turn, on these sts only (leave rem sts on hold).

Patt until front measures same as back to shoulder, end with a WS row.

Place marker at armhole edge.

Patt 10 more rows.

Cast off in patt.

With RS facing return to sts on hold, rejoin yarn and cast off loosely next 25 (27) sts, patt to end.

Patt until front measures same as back to shoulder, end with a WS row.

Cast off in patt.

### MAKING UP

Join right shoulder seam.

### RIGHT ARMHOLE BAND

With RS facing and 2.75mm needles, beg at underarm sideseam edge of back, pick up and k35 (41) sts up armhole edge to shoulder seam and 35 (41) sts down to armhole edge. 70 (82) sts.

**Next Row:** WS – \*K1, p1; rep from \* to end.

**Next Row:** RS – \*P1, k1; rep from \* to end.

Patt 5 more rows.

Cast off loosely in patt.

### LEFT BACK ARMHOLE BAND

With RS facing and 2.75mm needles, beg at left back armhole shoulder edge, pick up and k35 (41) sts down armhole edge (incl the 5 patt sts). 35 (41) sts.

**Next Row:** WS – K1, \*p1, k1; rep from \* to end.

**Next Row:** RS – K1, \*p1, k1; rep from \* to end.

Patt 5 more rows.

Cast off loosely in patt.

### LEFT FRONT ARMHOLE BAND

With RS facing and 2.75mm needles, omitting the 12 patt sts, pick up and k35 (41) sts up armhole edge to marker

and 8 sts along edge of flap. 43 (49) sts.

**Next Row:** WS – K1, \*p1, k1; rep from \* to end.

**Next Row:** RS – K1, \*p1, k1; rep from \* to end.

Patt 5 more rows.

Cast off loosely in patt.

Join right armhole band and sideseam, join lower seam, ensure the 12 patt sts are left over at end, then stitch the 12 patt sts neatly along lower back onto seam (= overlapping the back).

Sew buttons in place.

Sew the 2 snap fasteners to left shoulder flap and back.

### Wentworth Distributors NZ Ltd

Free phone AU: 1800 150 542

Free phone NZ: 0800 738 998

[www.naturallyyarnsnz.com](http://www.naturallyyarnsnz.com)

# DID YOU KNOW WE PUBLISH...



Check them out now online  
[www.wpcoco.com.au](http://www.wpcoco.com.au)

## SKILL LEVEL



intermediate

## WHAT YOU'LL NEED

### Yarn

#### Pillow #1

4, 6 balls 100gm Knit Picks Tuff Puff White 26836  
1 ball 50gm Knit Picks Swish Worsted Brights Pucker 26639

#### Pillow #2

4, 6 balls 100gm Knit Picks Tuff Puff Black 26837  
1 ball 50gm Knit Picks Swish Worsted Brights Highlighter Yellow 26646  
40cm, 50cm square pillow insert

### Needles and Tools

10mm circular needles  
Wool sewing needle

### Tension

8 sts by 12.5 rows in St st, blocked to 10cm

# NEON TRIM PILLOW

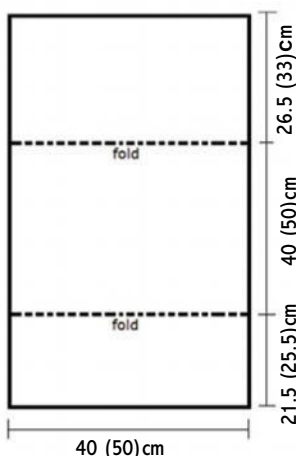
*Add a pop of colour to this simple pillow pattern by Teresa Gregorio*



### MEASUREMENTS

SIZE 40CM OR 50CM SQUARE

## FOLD DIAGRAM



## GETTING STARTED

**Notes:** Entire pillow is knit flat and seamed, with I-cord trim stitched on after blocking.

## HOW TO MAKE AND I-CORD

CO 2 sts.  
K 2. Without turning your work, slide sts to opposite end of needles. Pull yarn tight and k these 2 sts. Repeat these two steps until cord has reached desired length.

## WORKING PATTERN EDGE

Using Tuff Puff yarn, cast on 32 (40) sts.  
K three rows.

### Stockinette Section

Begin working in St st. Work in St st until pillow is 84 (105)cm long.

### Edge

K three rows. Cast off.

## TRIM

Using Swish Worsted yarn

held triple, cast on 2 sts. Work an I-cord for 6163 (204) cm.

## MAKING UP

Weave in ends, wash and block pillow to diagram. Fold pillow to diagram with longer half on top and seam along outside edges. Stitch I-cord trim to outside edge of pillow.

### Knit Picks

[www.KnitPicks.com](http://www.KnitPicks.com)

Ph: 1800 106 750



# FLARED THREE TONE TOP

*Design by Gitta Schrade for Naturally Yarns*

## SKILL LEVEL



beginner

## WHAT YOU'LL NEED

### Yarn

2, 2, 2, 2 balls 50gm  
Loyal DK 8ply A - #913  
2, 3, 3, 4 balls 50gm  
Loyal DK 8ply B - #927  
3, 3, 4, 4 balls 50gm  
Loyal DK 8ply C - #966

### Needles and Tools

3.75mm knitting needles  
4.00mm knitting needles  
Stitch holder and  
markers

### Tension

22 sts by 30 rows over  
Stst on 4.00mm needles  
to 10cm

### Special abbreviations

skp – slip 1 stitch, knit 1  
stitch, pass the slipped  
stitch over;

HAND KNIT YARNS by  
*Naturally*  
IT'S PURE  
NEW ZEALAND  
[www.naturallyyarnsnz.com](http://www.naturallyyarnsnz.com)

## STITCH GUIDE

### BACK

\*\*With 4.00mm needles and  
A, cast on 102 (110, 122, 134)  
sts.

Change to B.

**Row 1:** RS - K2; \*p2, k2; rep  
from \* to end.

**Row 2:** WS - P2; \*k2, p2; rep  
from \* to end.

Rep last 2 rows 2 (2, 3, 3)  
times more.

Cont in Stst until piece  
measures 8 (8, 9, 9) cm from  
beg, end with a WS row.

**\*Next Row:** RS - K2, skp, k to  
last 4 sts, k2tog, k2.

**Next Row:** WS - P.

Stst 4 rows. \*

Please read complete next  
sentence before commencing:

Rep from \* to \* (decreasing  
2 sts every 6 rows) and when  
piece measures 12 (13, 15, 17)  
cm from beg, end with a WS  
row and change to A and work  
for further 9 (10, 12, 14) cm  
while keeping dec's correct,  
end with a WS row.

Change to C and cont to dec  
as established until 84 (90,  
96, 102) sts on needle.

Cont straight in C until piece  
measures 33 (37, 41, 46) cm  
from beg, end with a WS row.

### Shape Underarm

Cast off 8 (9, 10, 10) sts beg  
next 2 rows. 68 (72, 76, 82) sts.

Dec 1 st each end next 4 rows.  
60 (64, 68, 74) sts. \*\*

Cont straight until piece  
measures 45 (50, 55, 61) cm  
from beg, end with a WS row.  
Cast off 14 (15, 16, 18) sts beg  
next 2 rows.

Leave rem 32 (34, 36, 38) sts  
on holder for collar.

### FRONT

Work as for Back from \*\* to  
\*\*.

Cont using C, work straight  
until piece measures 36 (41,  
45, 51) cm from beg, end with  
a WS row.

### Shape Neck

**Next Row:** RS - K24 (25, 26,  
28) sts, Turn, on these sts only  
(leave rem sts on hold).

Dec 1 st at neck edge next 10  
rows. 14 (15, 16, 18) sts.

Cont straight until piece  
measures 45 (50, 55, 61) cm  
from beg, end with a WS row.

Cast off rem 14 (15, 16, 18) sts.  
With RS facing return to sts

on hold, slip next 12 (14, 16,  
18) sts holder for collar, k to  
end of row.

Dec 1 st at neck edge next 10  
rows. 14 (15, 16, 18) sts.

Cont straight until piece  
measures 45 (50, 55, 61) cm  
from beg, end with a RS row.  
Cast off rem 14 (15, 16, 18) sts.

### SLEEVES

With 4.00mm needles and A,  
cast on 54 (58, 62, 66) sts.  
Change to B.

**Row 1:** RS - K2; \*p2, k2; rep  
from \* to end.

**Row 2:** WS - P2; \*k2, p2; rep  
from \* to end.

Rep last 2 rows 1 (1, 2, 2)  
times more.

Stst straight until piece  
measures 4.5 (5, 5, 6.5) cm  
from beg, end with a WS row.  
Change to C and cont in Stst  
until piece measures 8 (9, 10,  
11) cm from beg, end with a  
WS row.

Place marker each end.  
Stst 10 (12, 14, 14) rows.

## MEASUREMENTS

SIZE	8	10	12	14 YEARS
<b>TO FIT CHEST</b>	<b>71</b>	<b>76</b>	<b>81</b>	<b>86CM</b>
FINISHED FIT	76	81	86	92CM
<b>LOWER EDGE</b>	<b>93</b>	<b>100</b>	<b>109</b>	<b>120CM</b>
GARMENT LENGTH	45	50	55	61CM
<b>SLEEVE LENGTH</b>	<b>8</b>	<b>9</b>	<b>10</b>	<b>11CM</b>

Dec 1 st each end next 4 rows,  
then every other row twice -  
42 (46, 50, 54) sts.  
Cast off loosely rem sts.

### MAKING UP

Join left shoulder seam.

### COLLAR

With RS facing, 3.75mm  
needles and C, k the back  
neck holder 32 (34, 36, 38)  
sts, pick up and k25 (26, 28,  
29) sts down front neck edge,  
k the front holder 12 (14, 16,  
18) sts, pick up and k25 (26,  
28, 29) sts up neck edge to  
shoulder. 94 (100, 108, 114)  
sts.

Change to B.

**Next Row:** WS - P and inc 2  
(0, 0, 2) sts across back neck  
- 96 (100, 108, 116) sts.

**Next Row:** RS - K2; \*p2, k2;  
rep from \* to end.

**Next Row:** WS - P2; \*k2, p2;  
rep from \* to end.

Rep last 2 rows 3 times more.

Change to 4.00mm needles.

Cont in rib until collar  
measures 9 (11, 12, 12) cm  
from beg.

Cast off loosely in rib.

Join rem shoulder.

Mark centre of sleeves  
cast off and match up with  
shoulder seams, sew sleeves  
in place, sleeve side markers  
meeting with sideseam edge  
at underarm of garment.

Join side and sleeve seams.

### Wentworth Distributors NZ Ltd

Free phone AU: 1800 150 542

Free phone NZ: 0800 738 998

[www.naturallyyarnsnz.com](http://www.naturallyyarnsnz.com)





# CROCHET BUCKET

*Designed by Cleckheaton*

## SKILL LEVEL



## WHAT YOU'LL NEED

### Yarn

16 balls 50gm  
Cleckheaton Country  
Wide 14ply  
Pictured in colours 0015  
Mulberry, 0019 Metal  
and 0024 Airforce

### Needles and Tools

6.00mm crochet hook  
Wool sewing needle

### Tension

12 sts by 8 rows over side  
patt, on 6mm hook and 2  
strands of yarn together  
to 10cm.

Correct tension is  
not essential for this  
Bucket, however stated  
measurements and yarn  
quantity are based on  
this tension.

## MEASUREMENTS

SIZE: 25CM DIAMETER X 33CM HIGH

Cleckheaton

## WORKING PATTERN BUCKET

Using 6.00mm hook and 2 strands of yarn together, make 2ch.

**Round 1:** Miss 1ch, 6dc in 2nd ch from hook.

Note: As rounds are not completed with a sl st but are worked in a spiral shape, mark end of rounds with a contrasting thread or safety pin.

**Round 2:** (Do not beg with a ch), (2dc in next dc) 6 times, do not join. 12dc.

**Round 3:** (1dc in next dc, 2dc in next dc) 6 times. 18dc.

**Round 4:** (2dc in next dc, 1dc in each of next 2dc) 6 times. 24dc.

**Round 5:** (1dc in each of next 2dc, 2dc in next dc, 1dc in next dc) 6 times. 30dc.

**Round 6:** (1dc in each of next

4dc, 2dc in next dc) 6 times. 36dc.

**Round 7:** (1dc in each of next 2dc, 2dc in next dc, 1dc in each of next 3dc) 6 times. 42dc.

**Round 8:** (1dc in each of next 6dc, 2dc in next dc) 6 times. 48dc.

**Round 9:** (1dc in each of next 3dc, 2dc in next dc, 1dc in each of next 4dc) 6 times. 54dc.

**Round 10:** (1dc in each of next 8dc, 2dc in next dc) 6 times. 60dc.

**Round 11:** (1dc in each of next 5dc, 2dc in next dc, 1dc in each of next 4dc) 6 times. 66dc.

**Round 12:** (1dc in each of next 10dc, 2dc in next dc) 6 times. 72dc.

**Round 13:** (1dc in each of next 6dc, 2dc in next dc, 1dc in each of next 5dc) 6 times. 78dc.

**Round 14:** (1dc in each of next 12dc, 2dc in next dc) 6 times, sl st in next dc. 84dc.  
Do not fasten off.

### Beg Side Patt

**Note:** Side of bucket is worked in completed rounds, not in a spiral.

**Round 1:** 2ch (counts as first htr), 1htr in back loop only of each dc to end, sl st in 2nd ch at beg. 84 htr.

**Round 2:** 3ch (counts as 1htr, 1ch), miss next st, \* 1htr in both loops of next htr, 1ch, miss one st, rep from \* to end, sl st in 2nd of 3ch at beg.

**Round 3:** 2ch, \* 1tr in st missed in previous round (working over ch), 1htr in next htr, rep from \* to last st, 1tr in st missed in previous round, sl st in 2nd ch at beg.

Rep last 2 rounds until Side

measures approx 32cm, ending with a 3rd round.

### Beg Handle

**Next Round:** 14ch, miss next 15 sts, \* 1htr in next htr, 1ch, miss 1tr, rep from \* 33 times, do not join, cont working over 14ch lp, (1htr in 14ch lp, 1ch) 8 times. Do not join.

**Next Round:** \* 1htr in next htr, 1tr in tr missed in previous round, rep from \* 33 times, (1htr in next htr, 1tr in 14ch lp, working over ch) 8 times, 1htr in next htr, 1dc in next tr, sl st in next htr.  
Fasten off.

### MAKING UP

Do not press. Sew in ends.

### Cleckheaton Yarns

Phone 1800 337 032

[www.cleckheaton.com.au](http://www.cleckheaton.com.au)

## MISSED A COPY?

Please send me: ☐ CK50 ☐ CK51 ☐ CK52  
☐ CK53 ☐ CK54 ☐ CK55

\$9.95 each (Plus \$2.95 P & H for 1-2 copies, 3 or more \$4.95)

Name: .....

Address: .....

Suburb: .....

State: ..... P/code: .....

### Payment options:

1. I enclose a cheque/money order made payable to:

Woodlands Publishing Pty Ltd for \$.....

2. Please debit my ☐ Visa ☐ Mastercard

Card No \_\_\_\_/\_\_\_\_/\_\_\_\_/\_\_\_\_ Expiry: \_\_\_\_/\_\_\_\_

Card holder's name: .....

Signature: .....

Post to: Creative Knitting Magazine  
PO Box 8035, Glenmore Park NSW 2745

**DON'T  
MISS OUT**





# COTTON T-SHIRT

*Desert Garden Aran Cotton retains its shape after washing & drying in a clothes dryer, because it contains microfibre. Design by Jo Sharp*

## STITCH GUIDE

What makes this T-shirt fabulous is the extreme softness and drape of the fabric. The sleeves and yoke are knitted from cuff to cuff. The lower bodice section is picked up off the yoke and knitted in the round.

## PATTERN

### SLEEVE AND YOKE SECTION RIGHT SLEEVE

Cast on 28 (32, 36) sts.

**Row 1:** WS – \*K1, p1 rep from \* to end.

**Row 2:** RS – \*P1, k1 rep from \* to end.

Now work in st st, inc 1 st at each end of foll 6th row, then every foll 8th row, 9 times. 48(52,56) sts, 78 shaping rows.

Work 2 (4, 6) rows.

### Increase for yoke

Cast on 6 (7, 8) sts at the beg of next 2 rows. 60 (66, 72) sts. Work 14 (14, 14) rows Stocking stitch. 96 (98, 100) shaping rows.

## Divide for neck

**Next Row:** RS – Knit 30 (33, 36) sts place the rem 30 (33, 36) sts on a st holder.

Working with sts on needle cont front of bodice as follows;

**Row 1:** WS – Neck edge, K1, p1, k1, purl to end.

**Row 2:** RS – Knit to 2nd last stitch, p1, k1.

Repeat rows 1 and 2 until a further 42 (46, 52) rows are completed. Place stitches on st holder.

Attach yarn to remaining side of bodice back and work as follows;

**Row 1:** RS – Neck edge, K1, p1 knit to end.

**Row 2:** WS – Purl to last 3 sts, k1, p1, k1.

Repeat rows 1 and 2 until a further 42 (46, 52) rows are completed as for front neck. Work 14 rows ending on a WS row.

## Bodice Decrease

Cast off 6 (7, 8) sts at the beg of next 2 rows. 48 (52, 56) sts.

## Continue on left sleeve.

Cont in st st, dec 1 st at each end of next and foll 7th (8th, 9th) rows. Then dec 1 st at each end of every foll 8th row, 8 times. 28 (32, 36) sts remain. Work 8 (8, 10) rows st st.

**Next Row:** K1, p1 to end.

**Next Row:** P the k sts and k the p sts as they face you (Moss stitch). Cast off.

Press bodice. Join bodice, underarm and sleeve seams using backstitch.

## LOWER BODICE

Using a circular needle, pick up 100 (110, 120) sts evenly around bodice edge.

**Row 1:** RS – Knit this row, inc 1 stitch every 10 sts 110 (121, 132) sts.

Cont in st st until length (from picked up stitches) measures 35cm or length desired. Cast off.

## MAKING UP

Tie in loose ends working yarn into garment on wrong side. Oversee either end of neck opening to reinforce. Work in ends sewing with needle and thread to secure. Press garment.

Jo Sharp

[www.josharppatterns.com](http://www.josharppatterns.com)

## SKILL LEVEL



## WHAT YOU'LL NEED

### Yarn

10, 12, 14 balls 50gm Jo Sharp Desert Garden Aran Cotton in 668 Stark

### Needles and Tools

6.50mm knitting needles  
6.50mm circular needle  
2 stitch holders

### Tension

14 stitches by 19 rows  
over stocking stitch on  
6.50mm needles to 10cm

## MEASUREMENTS

TO FIT BUST	80	90	100CM
<b>FINISHED FIT</b>	<b>72</b>	<b>78</b>	<b>94CM</b>
GARMENT LENGTH	56	59	61CM
<b>SLEEVE LENGTH</b>	<b>50</b>	<b>51</b>	<b>52CM</b>





# CHUNKY CHAIN COWL

*Super quick and easy, this cowl is worked in a luxurious baby alpaca fibre.  
This is a great beginner project as well as a last minute gift idea.*

## GETTING STARTED

Wind your hank into a ball.  
This will only take about 5

minutes. If you can't find  
someone to hold the hank  
while you wind, the best option

is to place the hank over the  
back of a chair.

## WORKING PATTERN

With 9.00mm hook and  
chunky yarn, work 99 chain  
loosely, slst in 1st ch to join,  
being careful not to twist ch.

**Round 1:** 2ch, (1tr, 1ch, 2tr) in  
same st, \* 7ch, miss 8ch, (2tr,  
1ch, 2tr) in next ch, repeat  
from \* to last 8ch, 7ch, miss  
8ch, slst into top of 2ch at  
beginning of round.

**Round 2:** slst into next tr, ftr, \*  
V-st in next 1ch space, 1tr into  
next tr, 7ch, miss (1tr, 7ch, 1tr)  
and work 1tr in next tr, rep  
from \* to last 8ch length, 7ch,  
slst into top of ftr.

**Round 3:** slst into next tr, ftr,  
\* V-st in next 1ch sp, 1tr into  
next tr, 7ch, miss (1tr, 7ch, 1tr)  
and work 1tr in next tr, rep  
from \* to last 7ch length, 7ch,  
slst into top of ftr.  
Repeat Round 3 until desired  
width or until end of yarn.

## MAKING UP

Darn in ends.

**The Wool Inn**  
**Shop 14 NK Centre**  
**450 High St, Penrith**  
**Ph: 02 4732 2201**  
**[www.the-wool-inn.com.au](http://www.the-wool-inn.com.au)**

## MEASUREMENTS

LENGTH 140CM

WIDTH 19CM.

## SKILL LEVEL



## WHAT YOU'LL NEED

### Yarn

1 hank 100gm Indiecita  
Baby Alpaca Chunky

### Needles and Tools

9.00mm crochet hook  
Large eyed darning  
needle

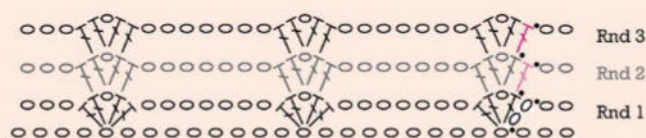
### Special Abbreviations

V-stitch - (1tr, 1ch, 1tr) all  
in same stitch.

ftr - foundation treble  
2ch, insert hook into 2nd  
ch from hook and draw  
up a loop, insert hook  
into stitch and draw up a  
loop, you will have three  
loops on hook, (yarn over  
hook and pull through  
first two loops), twice.

### TENSION

Not critical to project





# A LITTLE LOVE

SWEET DESIGNS TO KNIT AND CROCHET  
IN DREAMTIME MERINO 4 & 8 PLY  
AND BIG BABY 4 & 8 PLY

easy  
knits!

These patterns and more are available in Peaceful book 1104

Phone 1800 337 032 for your nearest stockist or visit  
[patonsyarns.com.au](http://patonsyarns.com.au) [f/auspinners](https://www.facebook.com/auspinners) [i/auspinners](https://www.instagram.com/auspinners)

 **Patons**



Patons Dreamtime Merino 8 ply



Patons Dreamtime Merino 4 ply



Patons Big Baby 4 & 8 ply



1104

A Patons

— model size 100 —

from  
baby to  
size 4!

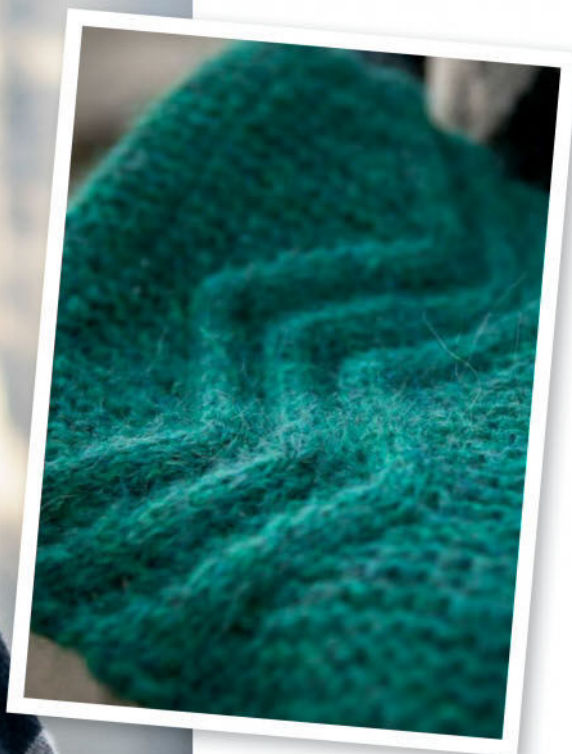
**PEACEFUL**

15 DESIGNS TO KNIT AND CROCHET IN  
DREAMTIME MERINO 4 AND 8 PLY  
AND BIG BABY 4 AND 8 PLY



# ZAGGED COWL

*This cowl is knit in the round in a single piece from bottom to top. The cable is worked on one side of the cowl only. Design by Allison Griffith for Knit Picks*



## Legend



knit  
knit stitch



purl  
purl stitch



c3 over 1 left  
sl3 to CN, hold in front.  
k1, then k3 from CN



c3 over 1 right  
sl1 to CN, hold in back.  
k3, k1 from CN

## MEASUREMENTS

CIRCUMFERENCE APPROX	50.5CM
HEIGHT	22.5

## STITCH GUIDE

## Design Notes:

Be sure to cast off very loosely or use a stretchy cast off, like the Sewn Bind Off.

## Sewn Bind Off (optional)

Follow the instructions provided on the Knit Picks website here: <http://tutorials.knitpicks.com/wptutorials/sewn-bind-off/>

## ZAGGED COWL

Cast on 80 sts. PM to mark beginning of row, and prepare to work in the round.

**Round 1:** P5, work Zagged Chart, P to M.

**Round 2:** K5, work Zagged Chart, K to M.

Repeat rounds 1 and 2 until you have completed 2 repeats of the Zagged Chart, ending

on round 32. Cast off loosely, or use the optional Sewn Bind Off.

## MAKING UP

Weave in ends and block lightly if desired.

## Knit Picks

[www.KnitPicks.com](http://www.KnitPicks.com)

Ph: 1800 106 750

## SKILL LEVEL



intermediate

## WHAT YOU'LL NEED

## Yarn

1 ball 50gm Knit Picks Wonderfluff in Kale Heather 27196

## Needles and Tools

6.50mm circular needle  
40cm or  
6.50mm set double pointed needles  
Stitch marker  
Cable needle  
Wool sewing needle

## Tension

15 sts by 30 rows in  
Garter st, unblocked to  
10cm.

## Special Abbreviations

C3 over 1 left slip 3 to cable needle, hold in front, k1, then k3 from cable needle.

C3 over 1 right slip 3 to cable needle, hold in back, k1, then k3 from cable needle.

## ZAGGED COWL CHART

23	22	21	20	19	18	17	16	15	14	13	12	11	10	9	8	7	6	5	4	3	2	1	
																							32
																							31
																							30
																							29
																							28
																							27
																							26
																							25
																							24
																							23
																							22
																							21
																							20
																							19
																							18
																							17
																							16
																							15
																							14
																							13
																							12
																							11
																							10
																							9
																							8
																							7
																							6
																							5
																							4
																							3
																							2
																							1



# CROCHET SKIRT

*A woollen skirt made from a patchwork of hexagonal crochet motifs with a waistband of double crochet and drawstring. The larger size is made by working the hexagons at a slightly looser tension, rather than by adding hexagons.*



## MEASUREMENTS

SIZE	A-B	C-D
<b>TO FIT HIP</b>	<b>85-90</b>	<b>100-110CM</b>
FINISHED FIT	90	105CM
<b>GARMENT LENGTH</b>	<b>75</b>	<b>75CM</b>

## STITCH GUIDE HEXAGON MOTIF

Worked in 3 Rounds.

Refer to Colour Sequence notes for colour positions in each round.

Starting Ch Ch 6. Join with a sl st in the 1st ch, to form a ring.

**Round 1:** Using first colour ch 3 (counts as 1st tr), 2tr in ring, (ch3, 3tr in ring) 5times, ch3, sl st in top of beg ch3 of this rnd. End yarn.

**Round 2:** Join next colour in next ch3 sp, ch3 (counts as 1st tr), (tr, ch 1, 2 tr) in same ch 3 sp, \*ch 2, skip next 3 tr, (2 tr, ch 1, 2 tr) in next ch 3 sp \*\*, rep the directions between \* and \*\* 4 more times, then ch 2, skip next 3 tr, sl st in top

of beg ch 3 of this rnd.

**Round 3:** Join next colour, Sl st in next tr, sl st in next ch 1 sp, ch 5 (counts as 1st tr and a ch 2), tr in same ch 1 sp, \* ch 2, skip next 2 tr, 3 tr in next ch 2 sp, ch 2, skip next 2tr, (tr, ch 2, tr) in next ch 1 sp \*\*, rep the directions between \* and \*\* 4 more times,

Then ch 2, skip next 2 tr, 3 tr in next ch 2 sp, ch 2, sl st in 3rd ch of beg ch 5 of this rnd. End off.

Weave in ends.

## HALF HEXAGON MOTIF

Worked over 3 Rows.

**Starting Ch:** Using first colour, ch 6.

**Row 1:** Using first colour 2 tr in 4th ch from hook, (ch 3, 3 tr in next ch) twice. Cut yarn, end off.

**Row 2:** Join next colour into top of 1st tr of row 1. Ch 3, 1 tr in 1st tr, ch 2, skip next 2 tr, (2 tr, ch 1, 2 tr) in next ch 3 sp, ch 2, skip next 3 tr, (2 tr, ch 1, 2 tr) in next ch 3 sp, ch 2, skip next 2 tr, 2 tr in last tr. Cut yarn, end off.

**Row 3:** Join next colour to 3rd ch at beg of row 2. Ch 5 (counts as 1st tr and a 2 ch) 3 tr in next 2 ch sp, (ch 2, skip next 2 tr, 1 tr, ch 2, 1 tr in next ch 1 sp, ch 2, skip next 2 tr, 3 tr in next 2 ch sp) twice. Ch 2, 1 tr in last tr. End yarn, weave in ends.

## SKILL LEVEL



## WHAT YOU'LL NEED

### Yarn

6, 7 Jo Sharp Classic DK Wool x 50g balls 302 Black  
7, 8 Jo Sharp Classic DK Wool x 50g balls 802 Heron

### Needles

1 x 5.00mm crochet hook

### Tension

**Note: it is important to make hexagons firmly so that skirt fabric keeps its shape.**

Sizes A-B make each hexagon 9.5cm across, measured at widest point.

Sizes C-D Use slightly looser tension to increase size of hexagons for larger size.

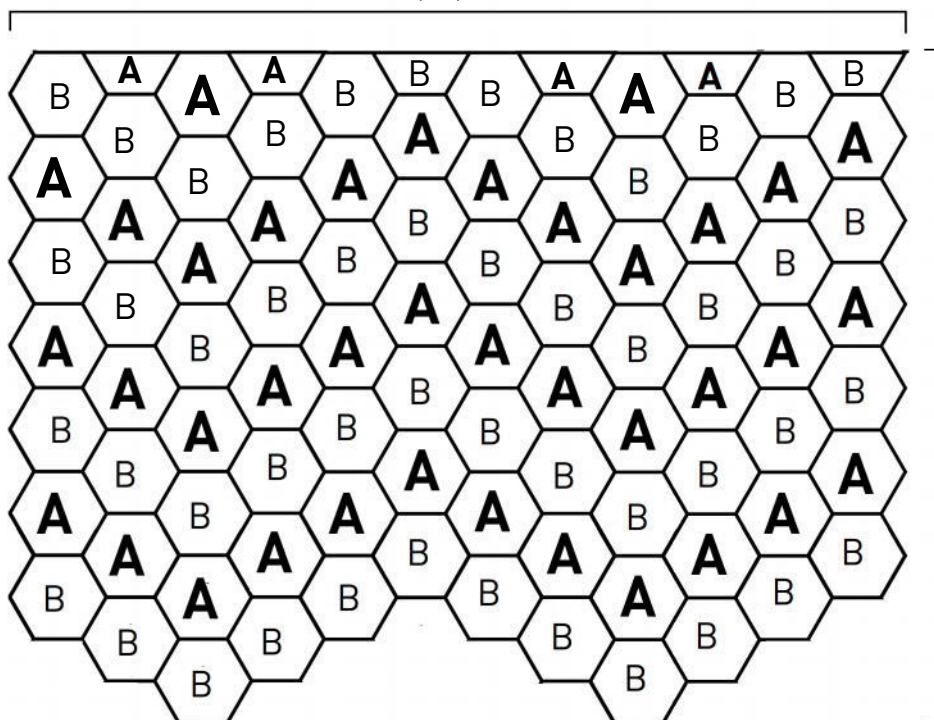
Make each hexagon 10cm across, measured at widest point.

### Special abbreviations

ch - chain  
dc - double crochet  
rnd - round  
sl st - slip st  
sp - space  
tr - treble

## CROCHET SKIRT COLOUR SEQUENCE

90 (105)cm







## HEXAGON COLOUR SEQUENCES

All hexagon Round 3's are worked in 302 black.

## HEXAGON A

**Round 1:** 802Heron,  
**Round 2 and 3:** 302Black

## HEXAGON B

**Round 1:** 302Black,  
**Round 2 and 3:** 802Heron

Make 38 of hexagon A's and 4 hexagon A halves.

Make 46 of hexagon B's and 2 hexagon B halves.

## MAKING UP

Arrange hexagons in columns (including half motifs at top), alternating colourways as shown in diagram and join, using a flat seam stitch. Sew columns together as per diagram, then join first and last column to form a tube.

## WAISTBAND

Using 302 Black, attach yarn to top edge, work 140 (160)dc around top edge.

**Next Round:** 1 dc in each dc in previous round.

Rep this rnd once more.

**Next Round:** (work holes for drawstring) 2 dc, 1 ch (skip 1 dc on previous rnd), \*4 dc, 1 ch (skip 1 dc on previous rnd), rep from \*ending with 2 dc. 28 (32) holes.

**Next Round:** 1dc in each dc and ch sp on previous rnd.

Work 2 more rnds of dc.

End yarn, weave in ends.

## DRAWSTRING

Using 302 Black and ch st, make drawstring to length desired.

Thread drawstring through holes in waistband.

**Jo Sharp**  
[www.josharppatterns.com](http://www.josharppatterns.com)

# ARAN SHAWL

*Design by Gitta Schrade for Naturally Yarns*

## STITCH GUIDE

**NOTE:** For best shading consistency, knit all balls either from the inside or the outside.

### MEASUREMENTS

SIZE	S-M	L-XL
<b>GARMENT WIDTH</b>	<b>45</b>	<b>55CM</b>
<b>DROP AT BACK</b>	<b>45</b>	<b>53CM</b>

## SKILL LEVEL



intermediate

## WHAT YOU'LL NEED

### Yarn

7, 9 balls 50gm Original Aran 10ply in shade #508

### Needles

4.50mm knitting needles  
3 markers  
Wool sewing needle

### Tension

20 sts by 26 rows over  
Stst on 4.50mm needles  
to 10cm

HAND KNIT YARNS by

**Naturally**  
IT'S PURE  
NEW ZEALAND

[www.naturallyyarnsnz.com](http://www.naturallyyarnsnz.com)

## SHAWL

With 4.50mm needles, cast on 92 (108) sts.

**Row 1:** RS – K4; \*p4, k4; rep from \* to end.

**Row 2:** WS – K4; \*k4, p4; rep from \* to last 8 sts, k8.

Rep last 2 rows 7 times more.

**Row 17:** RS – K4; \*k4, p4; rep from \* to last 8 sts, k8.

**Row 18:** WS – K4; \*p4, k4; rep from \* to end.

Rep last 2 rows 11 times more.

Rep these last 40 rows 7 (9)

times more (or as desired).

Piece measures approx 123 (153) cm.

Cast off loosely in patt.

## MAKING UP

With RS facing of piece place marker 45 (53) cm up from cast on edge on right hand edge (= end of RS rows).

Place a 2nd marker 19 (21) cm below first marker.

On cast-off row, place 3rd marker 19 (21) cm back from end of row.

Join the marked section of the cast-off row between 1st and 2nd markers.

Make 5 pom-poms of a finished diameter of approx 5cm each and attach to shawl edge, using photo as placement guide.

**Wentworth Distributors NZ Ltd**

Free phone AU: 1800 150 542

Free phone NZ: 0800 738 998

[www.naturallyyarnsnz.com](http://www.naturallyyarnsnz.com)





# SUBSCRIBE &

## Save 34% off the cover price!



HEAPS OF TIPS, TECHNIQUES AND IDEAS

# SAVE!

7 issues  
for only  
\$45.00

## 4 EASY WAYS TO SUBSCRIBE



**(02) 4722 2260**  
and quote 7 issue magazine offer



**www.wpcos.com.au**



**Fill in the form & freepost to:**  
Woodlands Publishing  
Reply Paid 8035  
Glenmore Park 2745



**Fax to: (02) 4733 8583**

# Australian Knitting

Yarn • Embellishments • Patterns

## subscription order form



**I would like to subscribe to 7 issues of Australian Knitting starting with the next available issue.**

### 1. YOUR DETAILS

**TITLE** ☐ MR ☐ MRS ☐ MS ☐ MISS

Name \_\_\_\_\_

Address \_\_\_\_\_

State \_\_\_\_\_ Postcode \_\_\_\_\_

Email \_\_\_\_\_

Telephone (inc. area code) \_\_\_\_\_

### 2. PLEASE TICK ONE BOX

- ☐ **AUSTRALIA:** 7 Issues of Australian Knitting for AUD \$45.00
- ☐ **NEW ZEALAND:** 7 Issues of Australian Knitting for AUD \$65.00
- ☐ **REST OF THE WORLD:** 7 Issues of Australian Knitting for AUD \$85.00

Prices include GST. \*Subscriptions will start with the first available issue. Existing subscriptions will simply be extended. If your order is cancelled before all issues are received, payment will be pro-rated over the total number of issues available as part of the offer for the purpose of calculating any refund due.

### 3. METHOD OF PAYMENT

☐ Cheque/Money Order (Aust. only)

I enclose a cheque/money order made payable to  
Woodlands Publishing Pty Ltd (ABN 30 115 093 162) for \$ .....

Please debit my: ☐ Mastercard ☐ Visa

Card No

\_\_\_\_

Expiry date \_\_\_\_/\_\_\_\_

Cardholder name (PLEASE PRINT) \_\_\_\_\_

Signature \_\_\_\_\_ Date \_\_\_\_\_

**FREE POST:** Woodlands Publishing  
Reply Paid 8035, Glenmore Park 2745



## SKILL LEVEL



intermediate

## WHAT YOU'LL NEED

### Yarn

- 3, 4, 5, 6, 6, 7 balls 50gm Patons Dreamtime Merino 8ply in Natural 2949 OR
- 1, 2, 2, 2, 2, 3 8ply balls 100gm Patons Big Baby in Stone 2563
- 4 (4, 4, 5, 5, 6) buttons.

### Needles and Tools

- 3.75mm knitting needles
- 4.00mm knitting needles
- Cable needle
- Wool sewing needle

### Special Abbreviations

C4F = Slip next 3 sts onto cable needle and leave at front of work, P1, then K3 from cable needle.  
C4B = Slip next st onto cable needle and leave at back of work, K3, then P1 from cable needle.  
C7F = Slip next 4 sts onto cable needle and leave at front of work, K3, slip last st from cable needle back onto left-hand needle and purl this st, then K3 from cable needle.  
M1 = make 1 – pick up loop which lies before next st, place on left-hand needle and knit into back of loop.

### Tension

22 sts by 30 rows over stocking st, on 4.00mm needles to 10cm.

# ARAN CARDI

*Designed by Patons*

## GETTING STARTED

### Left Front Panel Patt

[worked over 24 (24, 32, 32, 32, 32) sts]

**Row 1:** K3, P7, K3, purl to end.

**Row 2:** K2, [(K1, P1, K1) into next st, P3tog] 2 (2, 4, 4, 4, 4) times, K1, P3, K7, P3.

**Row 3:** C4F, P5, C4B, purl to end.

**Row 4:** K2, [P3tog, (K1, P1, K1) into next st] 2 (2, 4, 4, 4, 4) times, K2, P3, K5, P3, K1.

**Row 5:** P1, C4F, P3, C4B, purl to end.

**Row 6:** K2, [(K1, P1, K1) into next st, P3tog] 2 (2, 4, 4, 4, 4) times, (K3, P3) twice, K2.

**Row 7:** P2, C4F, P1, C4B, purl to end.

**Row 8:** K2, [P3tog, (K1, P1, K1) into next st] 2 (2, 4, 4, 4, 4) times, K4, P3, K1, P3, K3.

**Row 9:** P3, C7F, purl to end.

**Row 10:** K2, [(K1, P1, K1) into next st, P3tog] 2 (2, 4, 4, 4, 4) times, K4, P3, K1, P3, K3.

**Row 11:** P2, C4B, P1, C4F, purl to end.

**Row 12:** K2, [P3tog, (K1, P1, K1) into next st] 2 (2, 4, 4, 4, 4) times, (K3, P3) twice, K2.

**Row 13:** P1, C4B, P3, C4F, purl to end.

**Row 14:** K2, [(K1, P1, K1) into next st, P3tog] 2 (2, 4, 4, 4, 4) times, K2, P3, K5, P3, K1.

**Row 15:** C4B, P5, C4F, purl to end.

**Row 16:** K2, [P3tog, (K1, P1, K1) into next st] 2 (2, 4, 4, 4, 4) times, K1, P3, K7, P3.

Rows 1 to 16 incl form patt.

### Right Front Panel Patt

[worked over 24 (24, 32, 32, 32, 32) sts]

**Row 1:** P11 (11, 19, 19, 19, 19), K3, P7 K3.

**Row 2:** P3, K7, P3, K1, [P3tog, (K1, P1, K1) into next st] 2 (2, 4, 4, 4, 4) times, K2.

**Row 3:** P11 (11, 19, 19, 19, 19), C4F, P5, C4B.

**Row 4:** K1, P3, K5, P3, K2, [(K1, P1, K1) into next st, P3tog] 2 (2, 4, 4, 4, 4) times, K2.

**Row 5:** P12 (12, 20, 20, 20, 20), C4F, P3, C4B, P1.

**Row 6:** K2, (P3, K3) twice, [P3tog, (K1, P1, K1) into next st] 2 (2, 4, 4, 4, 4) times, K2.

**Row 7:** P13 (13, 21, 21, 21, 21), C4F, P1, C4B, P2.

**Row 8:** K3, P3, K1, P3, K4, [(K1, P1, K1) into next st, P3tog] 2 (2, 4, 4, 4, 4) times, K2.

**Row 9:** P14 (14, 22, 22, 22, 22), C7F, P3.

**Row 10:** K3, P3, K1, P3, K4, [P3tog, (K1, P1, K1) into next st] 2 (2, 4, 4, 4, 4) times, K2.

**Row 11:** P13 (13, 21, 21, 21, 21), C4B, P1, C4F, P2.

**Row 12:** K2, (P3, K3) twice, [(K1, P1, K1) into next st, P3tog] 2 (2, 4, 4, 4, 4) times, K2.

**Row 13:** P12 (12, 20, 20, 20, 20), C4B, P3, C4F, P1.

**Row 14:** K1, P3, K5, P3, K2, [P3tog, (K1, P1, K1) into next st] 2 (2, 4, 4, 4, 4) times, K2.

**Row 15:** P11 (11, 19, 19, 19, 19), C4B, P5, C4F.

**Row 16:** P3, K7, P3, K1, [(K1, P1, K1) into next st, P3tog] 2 (2, 4, 4, 4, 4) times, K2.

Rows 1 to 16 incl form patt.

## WORKING PATTERN

### BACK

Using 3.75mm needles, cast on 55 (61, 65, 71, 73, 77) sts.

**Row 1:** K2, \* P1, K1, rep from \* to last st, K1.

**Row 2:** K1, \* P1, K1, rep from \* to end.

Last 2 rows form rib.

Work a further 4 rows rib.

Change to 4.00mm needles.

### Beg Purl Fabric

**Row 1:** Purl.

**Row 2:** Knit.

Last 2 rows form purl fabric for rem.

Work 2 rows.

### Shape Sides

Dec one st at each end of next row, then in every foll 10th (12th, 14th, 18th, 22nd, 24th)

## MEASUREMENTS

SIZE	0	3	6	9	12	18 MTHS
<b>TO FIT CHEST</b>	<b>35</b>	<b>40</b>	<b>45</b>	<b>50</b>	<b>53</b>	<b>55CM</b>
FINISHED FIT AT UNDERARM	42	47	52	57	60	62CM
<b>GARMENT LENGTH</b>	<b>23</b>	<b>26</b>	<b>29</b>	<b>32</b>	<b>35</b>	<b>37CM</b>
SLEEVE LENGTH	11	13	16	19	21	23CM



**Patons**





row until 49 (55, 59, 65, 67, 71) sts rem.  
Work 7 (9, 9, 9, 9, 11) rows.

#### Shape Raglan Armholes

Cast off 1 (2, 2, 2, 2, 2) sts at beg of next 2 rows. 47 (51, 55, 61, 63, 67) sts.

**Row 1:** K1, sl 1, K1, psso, purl to last 3 sts, K2tog, K1.

**Row 2:** P1, P2tog, knit to last 3 sts, P2tog tbl, P1.

**Row 3:** As Row 1.

**Row 4:** P2, knit to last 2 sts, P2. 41 (45, 49, 55, 57, 61) sts.

Rep last 4 rows 0 (0, 0, 2, 1, 2) times. 41 (45, 49, 43, 51, 49) sts.

Dec one st (as before) at each end of next row, then in every foll alt row until 17 (17, 19, 19, 21, 21) sts rem.

Work 1 row.

Cast off rem 17 (17, 19, 19, 21, 21) sts.

#### LEFT FRONT

Using 3.75mm needles, cast on 27 (31, 35, 37, 39, 41) sts. Work 5 rows rib as for Back.

**Row 6:** Rib 12 (12, 20, 20, 20, 20), M1, rib 1, M1, rib 9, M1, rib 1, M1, rib to end. 31 (35, 39, 41, 43, 45) sts.

Change to 4.00mm needles.

#### Beg Patt

Working from Left Front Panel  
Patt instructions place panel as folls

**Row 1:** P7 (11, 7, 9, 11, 13), work row 1 of panel patt across last 24 (24, 32, 32, 32, 32) sts.

**Row 2:** Work row 2 of panel patt across first 24 (24, 32, 32, 32, 32) sts, knit to end.

**Row 3:** P7 (11, 7, 9, 11, 13), work row 3 of panel patt across last 24 (24, 32, 32, 32, 32) sts.

**Row 4:** Work row 4 of panel patt across first 24 (24, 32, 32, 32, 32) sts, knit to end.

#### Shape Side

Keeping panel patt correct as placed (noting that rows 1 to 16 incl form patt rep), dec one st at beg of next row, then in every foll 10th (12th, 14th, 18th, 22nd, 24th) row twice. 28 (32, 36, 38, 40, 42) sts. Work 7 (9, 9, 9, 9, 11) rows.

#### Shape Raglan Armhole

Keeping patt correct, cast off 1 (2, 2, 2, 2, 2) sts at beg of next row. 27 (30, 34, 36, 38, 40) sts.

Work 1 row.

**Row 1:** K1, sl 1, K1, psso, patt to end.

**Row 2:** Patt to last 3 sts, P2tog tbl, P1.

**Row 3:** As Row 1.

**Row 4:** Patt to last 2 sts, P2. 24 (27, 31, 33, 35, 37) sts.

Rep last 4 rows 0 (0, 0, 2, 1, 2) times. 24 (27, 31, 27, 32, 31) sts.

Dec one st (as before) at beg of next row, then in every foll alt row until 18 (19, 23, 22, 25, 25) sts rem.

#### Shape Neck

**Next Row:** WS - Cast off 3 (4, 5, 5, 5, 5) sts, patt to last 2 sts, P2. 15 (15, 18, 17, 20, 20) sts.

Dec one st (as before) at armhole edge in next row, then in every foll alt row 5 (5, 6, 6, 7, 7) times, at same time dec one st at neck edge in every row 5 (5, 7, 5, 7, 7) times, then in every foll alt row 2 (2, 2, 3, 3, 3) times. 2 sts.  
**Next Row:** P2, turn, K2tog. Fasten off.

## RIGHT FRONT

Using 3.75mm needles, cast on 27 (31, 35, 37, 39, 41) sts. Work 5 rows rib as for Back.  
**Row 6:** Rib 8 (12, 8, 10, 12, 14), M1, rib 1, M1, rib 9, M1, rib 1, M1, rib to end. 31 (35, 39, 41, 43, 45) sts.  
 Change to 4.00mm needles.

## Beg Patt

Working from Right Front Panel Patt instructions place panel as folls –

**Row 1:** Work row 1 of panel patt across first 24 (24, 32, 32, 32, 32) sts, purl to end.  
**Row 2:** K7 (11, 7, 9, 11, 13), work row 2 of panel patt across last 24 (24, 32, 32, 32, 32) sts.  
**Row 3:** Work row 3 of panel patt across first 24 (24, 32, 32, 32, 32) sts, purl to end.  
**Row 4:** K7 (11, 7, 9, 11, 13), work row 4 of panel patt across last 24 (24, 32, 32, 32, 32) sts.

## Shape Side

Keeping panel patt correct as placed (noting that rows 1 to 16 incl form patt rep), dec one st at end of next row, then in every foll 10th (12th, 14th, 18th, 22nd, 24th) row twice. 28 (32, 36, 38, 40, 42) sts. Work 8 (10, 10, 10, 10, 12) rows.

## Shape Raglan Armhole

Keeping patt correct, cast off

1 (2, 2, 2, 2, 2) sts at beg of next row. 27 (30, 34, 36, 38, 40) sts.

**Row 1:** Patt to last 3 sts, K2tog, K1.  
**Row 2:** P1, P2tog, patt to end.  
**Row 3:** As Row 1.  
**Row 4:** P2, patt to end. 24 (27, 31, 33, 35, 37) sts.  
 Rep last 4 rows 0 (0, 0, 2, 1, 2) times. 24 (27, 31, 27, 32, 31) sts.  
 Dec one st (as before) at end of next row, then in every foll alt row until 18 (19, 23, 22, 25, 25) sts rem.  
 Work 1 row.

## Shape Neck

**Next Row:** RS - Cast off 3 (4, 5, 5, 5, 5) sts, patt to last 3 sts, K2tog, K1. 14 (14, 17, 16, 19, 19) sts.  
 Dec one st (as before) at armhole edge in every foll alt row 5 (5, 6, 6, 7, 7) times, at same time dec one st at neck edge in every row 6 (6, 8, 6, 8, 8) times, then in every foll alt row 1 (1, 1, 2, 2, 2) times. 2 sts.  
 Work 1 row.  
**Next Row:** P2, turn, K2tog. Fasten off.

## SLEEVES

Using 3.75mm needles, cast on 39 (39, 41, 41, 43, 45) sts. Work 6 rows rib as for Back, dec one st in centre of last row. 38 (38, 40, 40, 42, 44) sts.  
 Change to 4.00mm needles.

## Beg Patt

**Row 1:** RS - Purl.  
**Row 2:** K11 (11, 12, 12, 13, 14), [(K1, P1, K1) into next st, P3tog] 4 times, K11 (11, 12, 12, 13, 14).  
**Row 3:** Purl.  
**Row 4:** K11 (11, 12, 12, 13, 14), [P3tog, (K1, P1, K1) into

next st] 4 times, K11 (11, 12, 12, 13, 14).  
 Rows 1 to 4 incl form patt. Keeping patt correct and working extra sts into purl fabric, inc one st at each end of next row, then in every foll 8th (8th, 10th, 10th, 10th, 12th) row until there are 44 (46, 48, 50, 52, 54) sts.  
 Cont in patt without further shaping until Sleeve measures 11 (13, 16, 19, 21, 23) cm from beg, working last row on wrong side.

## Shape Raglan

Keeping patt correct, cast off 1 (2, 2, 2, 2, 2) sts at beg of next 2 rows. 42 (42, 44, 46, 48, 50) sts.

## Size 0 only

**Row 1:** K1, sl 1, K1, psso, patt to last 3 sts, K2tog, K1.  
**Row 2:** P1, P2tog, patt to last 3 sts, P2tog tbl, P1.  
**Row 3:** As Row 1.  
**Row 4:** P2, patt to last 2 sts, P2.  
 Rep last 4 rows once. 30 sts.

## Sizes 12 and 18 months only

**Next Row:** K1, sl 1, K1, psso, patt to last 3 sts, K2tog, K1.  
**Next Row:** P2, patt to last 2 sts, P2.  
**Next Row:** K1, patt to last st, K1.  
**Next Row:** P2, patt to last 2 sts, P2. (46, 48) sts.

**All sizes** 30 (42, 44, 46, 46, 48) sts.

**Next Row:** K1, sl 1, K1, psso, patt to last 3 sts, K2tog, K1.  
**Next Row:** P2, patt to last 2 sts, P2.  
 Keeping patt correct, dec one st (as before) at each end of next row, then in every foll alt row until 10 (10, 10, 10, 12, 12) sts rem.  
 Work 1 row. Cast off.

## NECKBAND

**Note:** We recommend using mattress stitch to sew up your cardi.

Join raglan seams, noting that tops of sleeves form part of neckline. With RS facing and using 3.75mm needles, knit up 14 (14, 16, 16, 18, 18) sts evenly along right front neck, knit up 7 (7, 7, 7, 9, 9) sts across top of right sleeve, knit up 15 (15, 17, 17, 19, 19) sts across back neck, knit up 7 (7, 7, 7, 9, 9) sts evenly across top of left sleeve, then knit up 14 (14, 16, 16, 18, 18) sts evenly along left front neck. 57 (57, 63, 63, 73, 73) sts.  
 Work 6 rows rib as for Back, beg with a row 2.  
 Cast off loosely knitways on WS.

## RIGHT FRONT BAND

With RS facing and using 3.75mm needles, knit up 49 (55, 61, 71, 71, 77) sts evenly along right front edge and end of neckband.  
 Work 3 rows rib as for Back, beg with a row 2.  
**Row 4:** Rib 2, yfwd, K2tog, \* rib 12 (14, 16, 14, 14, 12), yfwd, K2tog, rep from \* 2 (2, 2, 3, 3, 4) times, rib 3. 4 (4, 4, 5, 5, 6) buttonholes.  
 Work 2 rows rib.  
 Cast off knitways on wrong side.

## LEFT FRONT BAND

Work as for Right Front Band, omitting buttonholes.

## MAKING UP

Do not press. Join side and sleeve seams. Sew on buttons.

## Patons

Ph: 1800 337 032

[www.patonsyarns.com.au](http://www.patonsyarns.com.au)



# JACKET AND HEAD BAND

*Design by Gitta Schrade for Filatura Di Crosa*

## STITCH GUIDE

### RIDGED RIB PATTERN

**Row 1:** RS – Knit.

**Row 2:** Knit.

**Row 3:** RS – P1; \*k1, p1; rep from \* to end.

**Row 4:** K1; \*p1, k1; rep from \* to end.

Rep these 4 rows for Ridged Rib patt.

## JACKET BACK

With 3.50mm needle, cast on 61 (67, 73, 79) sts.

Garter Stitch (k every row) for 4 rows.

Cont in Ridged Rib patt (beg with row 1 of patt) and dec 1 st each end every following 6th (6th, 8th, 8th) row 5 times. 51 (57, 63, 69) sts.

Patt straight until piece measures 14 (15, 17, 18) cm from beg, end with a WS row.

### Shape Armholes

Cast off 3 (4, 4, 5) sts beg of next 2 rows, then dec 1 st each end next 3 RS rows. 39 (43, 49, 53) sts.

Patt straight until work measures 22 (24, 26, 28) cm from beg, end with a WS row. Cast off 9 (10, 12, 14) sts beg next 2 rows, place rem 21 (23, 25, 25) sts on holder for back neck.

### LEFT FRONT

With 3.50mm needles, cast on 35 (39, 41, 45) sts.

Garter Stitch (k every row) for 4 rows.

Cont in Ridged Rib patt (beg with row 1 of patt) and dec 1 st at sideseam edge every following 6th (6th, 8th, 8th) row 5 times – 30 (34, 36, 40) sts.

Patt straight until piece measures 14 (15, 17, 18) cm from beg, end with a WS row.

### Shape Armhole

Cast off 3 (4, 4, 5) sts beg of next RS row.

Dec 1 st at armhole edge next 3 RS rows. 24 (27, 29, 32) sts. Patt straight until work measures 18 (20, 21, 23) cm from beg, end with a RS row.

### Shape Neck

**Next Row:** WS – Cast off 4 (5, 5, 5) sts, patt until 5 (6, 6, 7) sts, slip these sts to holder, patt to end.

Cast off at neck edge at beg of WS rows 3 sts once, 2 sts once then 1 st once. 9 (10, 12, 14) sts.

Patt straight until front measures same as back to shoulder, end with a WS row. Cast off rem 9 (10, 12, 14) sts for shoulder.

Place 4 (4, 5, 5) button markers along straight front edge, the first one 4cm from cast on edge, the last one 1.5cm from beg of neck shaping and the rem evenly in between.

### RIGHT FRONT

With 3.50mm needles, cast on 35 (39, 41, 45) sts.

Garter Stitch (k every row) for 4 rows.

While progressing with the front, work buttonholes opposite markers on RS row as following: Patt 2 (3, 3, 3) sts, k2tog, yo twice; patt to end of row; on next row work only into first yo, drop 2nd yo off needle.

Cont in Ridged Rib patt (beg with row 1 of patt) and dec 1 st at sideseam edge every following 6th (6th, 8th, 8th) row 5 times – 30 (34, 36, 40) sts.

Keeping buttonhole placement correct, patt straight until piece measures 14 (15, 17, 18) cm from beg, end with a RS row.

### Shape Armhole

Cast off 3 (4, 4, 5) sts beg of next WS row.

Keeping buttonhole placement correct, dec 1 st at armhole edge next 3 WS rows. 24 (27, 29, 32) sts.

Keeping buttonhole placement correct, patt straight until work measures 18 (20, 21, 23) cm from beg, end with a WS row.

### Shape Neck

**Next Row:** RS – Cast off 4 (5, 5, 5) sts, patt until 5 (6, 6, 7) sts, slip these sts to holder, patt to end.

Cast off at neck edge at beg of RS rows 3 sts once, 2 sts once then 1 st once. 9 (10, 12, 14) sts. Patt straight until front meas same as back to shoulder, end with a RS row.

Cast off rem 9 (10, 12, 14) sts for shoulder.

### SLEEVES

With 3.25mm needles, cast on 35 (37, 39, 41) sts.

Garter Stitch for 4 (4, 6, 6) rows.

Change to 3.50mm needles. Cont in Ridged Rib patt (beg with row 1) and inc 1 st each

## MEASUREMENTS

SIZE	NEWBORN	3	6-9	12-18 MONTHS
<b>TO FIT CHEST</b>	<b>36</b>	<b>41</b>	<b>46</b>	<b>51CM</b>
FINISHED FIT	41	46	51	56CM
<b>GARMENT LENGTH</b>	<b>22</b>	<b>24</b>	<b>26</b>	<b>28CM</b>
SLEEVE LENGTH	13	15	17	19CM
<b>HEADBAND</b>	<b>33</b>	<b>36</b>	<b>39.5</b>	<b>43CM</b>

end next row then every 8th (7th, 8th, 7th) row to 41 (45, 47, 51) sts.

Patt straight until piece measures 13 (15, 17, 19) cm from beg, end with a WS row.

### Shape Top

Cast off 3 (4, 4, 5) sts beg next 2 rows.

Dec 1 st each end next 10 rows.

Cast off 2 sts beg next 4 rows.

Cast off loosely rem 7 (9, 11, 13) sts.

### SKILL LEVEL



### WHAT YOU'LL NEED

#### Yarn

2, 3, 3, 4 balls 50gm Zarina in shade #1814  
4 (4, 5, 5) buttons for jacket, and 1 button for headband - Incomparable Buttons: L547

#### Needles and Tools

3.25mm knitting needles  
3.50mm knitting needles  
Stitch holders and markers  
3.25mm double-ended needles

#### Tension

26 sts and 34 rows over Pattern on 3.5mm needles - 10cm

#### Special abbreviations

skp - slip 1 stitch, knit 1 stitch, pass the slipped st over

HAND KNIT YARNS by  
**Naturally**  
IT'S PURE  
NEW ZEALAND  
[www.naturallyyarnsnz.com](http://www.naturallyyarnsnz.com)



### MAKING UP

Join shoulder seams.

### COLLAR

With RS facing and 3.25mm needles, slip the right front holder sts to needle (as if they have been already worked), join yarn, pick up and k14 (15, 16, 17) sts up front neck edge, k the back neck holder 21 (23, 25, 25) sts, pick up and k14 (15, 16, 17) sts down right neck edge, k the left front holder sts. 59 (65, 69, 73) sts.

**Next Row:** RS of collar – K1, \*p1, k1; rep from \* to end.

**Next Row:** K all sts.

Rep last 2 rows until collar measures 5 (5.5, 6.5, 7) cm, end with a rib row.

Cast off extra loosely in k (otherwise collar will not

sit well; use larger needle if required).

Insert sleeves, join side and sleeve seams. Sew on buttons.

### HEADBAND

With 3.50mm needle, cast on 79 (87, 95, 103) sts.

**Row 1:** RS – P1; \*k1, p1; rep from \* to end.

**Row 2:** K1; \*p1, k1; rep from \* to end.

### Beg Ridged Rib pattern

**Row 1:** RS – Knit.

**Row 2:** Knit.

**Row 3:** RS – P1; \*k1, p1; rep from \* to end.

**Row 4:** K1; \*p1, k1; rep from \* to end.

Rep these 4 rows for Ridged Rib patt 4 (4, 5, 5) times more. Cast off in rib.

Join back seam.

### I-CORD FLOWER

Using the 3.25mm double ended needles, cast on 5 sts; \*do not turn, slip these 5 sts back to right end of needle, pull yarn across the back of work and k5; rep from \* until cord measures approx. 43cm; do not turn, slip these 5 sts back to right end of needle, pull yarn across the back of work and cast off.

Fold I-cord into 6 even sized loops and tack together, ensure cast-on and cast-off are hidden in the centre. Sew flower to centre front or slightly off to the side of headband. Sew button in place.

### Wentworth Distributors NZ Ltd

Free phone AU: 1800 150 542

Free phone NZ: 0800 738 998

[www.naturallyyarnsnz.com](http://www.naturallyyarnsnz.com)



# BABY BLANKET

*Crochet baby throw that is super quick and super easy and super squishy.*

*Designed by Anissa Rossington for Knitch.*



## SKILL LEVEL



## WHAT YOU'LL NEED

### Yarn

5 x skeins Cascade Cloud

### Needles and Tools

7.00mm crochet hook

### Measurements

Size: To fit cot or basinet

### Special Abbreviations

Ch – chain

Tr - treble crochet

Tr3tog – 3 stitch treble decrease (Yarn over hook, insert hook into stitch and pull a loop through. Yarn over and pull through two loops on hook, (2 loops on hook) yarn over, insert hook into the next space, pull through a loop, yarn over and pull through two loops on hook. (3 loops left on hook) yarn over, insert hook into the next space, pull through a loop, yarn over, pull through two loops on hook. (4 loops left on hook) yarn over; pull through all four loops left on hook  
3tr increase - 3 treble increase (3 tr in same space)

### Tension

As per wool

**WORKING PATTERN**

Using colour 1 chain 101 stitches.

**Row 1:** 2tr in 3rd chain from hook,

\*1 tr in each of the next 3 ch sp, tr3tog over next 3 ch sp - twice, 1tr in next 3 ch sp, 3tr increase in next 2 ch sp\* repeat from \* to \* until the last 13 ch spaces, then 1 tr in the next 3 ch sp,

tr3 tog over next 3 ch sp twice, 1tr in next 3 ch sp, 3tr increase in last ch sp.

**Row 2:** ch3, 2tr in to same st, \*1 tr in each of the next 3 st, tr3tog over next 3 st - twice, 1tr in next 3 st, 3tr increase in next 2 st\* repeat from \* to \* until the last 13 st, then 1 tr in the next 3 st, tr3tog over next 3 st -

twice, 1tr in next 3 ch sp, 3tr increase in last ch sp.

**Row 3:** repeat row 2 for 7 more rows (9 rows in total)

**Join colour 2** – and repeat row 2 for 9 more rows.

**Join colour 3** – and repeat row 2 for 9 more rows.

**Join colour 4** – and repeat row 2 for 9 more rows.

**Join colour 5** – and repeat row 2 for 9 more rows.

**MAKING UP**

Weave in ends and block lightly.

**Knitch**

85 Latrobe Terrace

Paddington Qld

Phone: 07 31617476

[www.knitch.com.au](http://www.knitch.com.au)

**MISSED A COPY?**

Please send me: ☐ AK7-3 ☐ AK7-4 ☐ AK8-1  
☐ AK8-2 ☐ AK8-3 ☐ AK8-4

\$9.95 each (Plus \$2.95 P & H for 1-2 copies, 3 or more \$4.95)

Name: .....

Address: .....

Suburb: .....

State: ..... P/code: .....

Payment options:

1. I enclose a cheque/money order made payable to:

Woodlands Publishing Pty Ltd for \$.....

2. Please debit my ☐ Visa ☐ Mastercard

Card No \_\_\_\_/\_\_\_\_/\_\_\_\_/\_\_\_\_ Expiry: \_\_\_\_/\_\_\_\_

Card holder's name: .....

Signature: .....

**GREAT  
GIFT IDEAS**



Post to: Australian Knitting Magazine  
 PO Box 8035, Glenmore Park NSW 2745



# CROPPED JACKET

*Design by Gitta Schrade for Naturally Yarns*



## STITCH GUIDE

### BACK

With 3.00mm needles, cast on 85 (93, 99, 107) sts. K1, p1 rib for 8 (8, 10, 10) rows.

Change to 3.25mm needles. Cont in Stst until work measures 9 (12, 15, 18) cm from beg, end with a WS row.

### Shape Armholes

Cast off 4 sts beg next 2 rows. Dec 1 st each end next 5 (5, 6, 6) rows, then every other row 2 (2, 2, 3) times. 63 (71, 75, 81) sts.

Cont straight until piece measures 20.5 (24.5, 28.5, 32.5) cm from beg, end with a WS row.

### Shape Neck & Shoulder

**Next Row:** RS - K22 (25, 26, 28) sts, Turn, on these sts only. **Next Row:** WS - Cast off 4 sts, p to end.

**Next Row:** K.

**Next Row:** Cast off 4 sts, p to end.

**Next Row:** Cast off 7 (8, 9, 10) sts, k to end.

**Next Row:** P.

**Next Row:** Cast off rem 7 (9, 9, 10) sts.

With RS facing, return to rem sts, slip next 19 (21, 23, 25) sts to holder for centre back neck, rejoin yarn and k to end.

**Next Row:** WS - P.

**Next Row:** RS - Cast off 4 sts, k to end.

**Next Row:** P.

**Next Row:** Cast off 4 sts, k to end.

**Next Row:** Cast off 7 (8, 9, 10) sts, p to end.

**Next Row:** K.

**Next Row:** Cast off rem 7 (9, 9, 10) sts.

## LEFT FRONT

With 3.00mm needles, cast on 41 (45, 49, 53) sts.

K1, p1 rib for 8 (8, 10, 10) rows.

Change to 3.25mm needles.

Cont in Stst until piece measures 7.5 (7.5, 10, 10) cm from beg, end with a WS row.

### Shape Front Edge and Armhole

(Please read through all of the front shaping before commencing to not miss the point of armhole shaping)

**\*\*Next Row:** RS - K to last 4 sts, k2tog, k2.

**Next Row:** WS - P.

## MEASUREMENTS

SIZE	2	4	6	8 YEARS
<b>TO FIT CHEST</b>	<b>56</b>	<b>61</b>	<b>66</b>	<b>71CM</b>
FINISHED FIT	61	66	71	76CM
<b>GARMENT LENGTH</b>	<b>22</b>	<b>26</b>	<b>30</b>	<b>34CM</b>
SLEEVE LENGTH	23	25.5	28	34CM

**Next Row:** RS - K to last 4 sts, k2tog, k2.

Beg with a purl row, Stst for 3 rows. \*\*

Rep from \*\* to \*\* 7 (7, 8, 8) times more, then cont to dec as established every 4th row (= every other RS row), at the same time, when front measures same as back to underarm shape armhole as for back (= cast off 4 sts beg next RS row, dec 1 st at armhole edge next 5 (5, 6, 6) rows, then every other row 2 (2, 2, 3) times.

Keeping front shaping correct as given above until 14 (17, 18, 20) sts rem on needle for shoulder.

Cont straight until front measures same as back to shoulder, end with a WS row.

### Shape Shoulder

**Next Row:** RS - Cast off 7 (8, 9, 10) sts, k to end.

**Next Row:** P.

**Next Row:** Cast off rem 7 (9, 9, 10) sts.

### RIGHT FRONT

With 3.00mm needles, cast on 41 (45, 49, 53) sts.

K1, p1 rib for 8 (8, 10, 10) rows.

Change to 3.25mm needles.

Cont in Stst until piece measures 5 (5, 7.5, 7.5) cm from beg, end with a WS row.

### Shape Front Edge and Armhole

(Please read through all of the front shaping before commencing to not miss the point of armhole shaping)

**\*\*Next Row:** RS - K2, skp, k to end.

**Next Row:** WS - P.

**Next Row:** RS - K2, skp, k to end.

Beg with a purl row, Stst for 3 rows. \*\*

Rep from \*\* to \*\* 7 (7, 8, 8) times more, then cont to dec as established every 4th row (= every other RS row), at the same time, when front measures same as back to underarm shape armhole as for back (= cast off 4 sts beg next WS row, dec 1 st at armhole edge next 5 (5, 6, 6) rows, then every other row 2 (2, 2, 3) times.

Keeping front shaping correct as given above until 14 (17, 18, 20) sts rem on needle for shoulder.

Cont straight until front measures same as back to shoulder, end with a RS row.

### Shape Shoulder

**Next Row:** WS - Cast off 7 (8, 9, 10) sts, p to end.

**Next Row:** K.

**Next Row:** Cast off rem 7 (9, 9, 10) sts.

### SLEEVES

With 3.00mm needles, cast on 47 (49, 51, 55) sts.

K1, p1 rib for 8 (8, 10, 10) rows.

Change to 3.25mm needles.

Cont in Stst and inc 1 st each end every 8th (9th, 9th, 10th) row to 63 (65, 69, 75) sts.

Cont straight until work measures 23 (25.5, 28, 34) cm from beg, end with a WS row.

### Shape Top

Cast off 4 sts beg next 2 rows. Dec 1 st each end next 8 rows, then 1 st each end every other row 9 (10, 12, 14) times, then dec 1 st each end next 4 rows. Cast off loosely rem 13 (13, 13, 15) sts.

### MAKING UP

Use mattress st to sew all seams.

Join shoulder seams.

### FRONT BAND

With RS facing and 3.25mm needles beg at lower right front edge, pick up and k21 (21, 28, 28) sts up straight front edge, 43 (55, 60, 71) sts up front neck edge to shoulder, 10 sts down back neck, k the back neck holder sts, pick up and k 10 sts up back neck, 43 (55, 60, 71) sts down shaped front neck and k21 (21, 28, 28) sts down straight front edge. 167 (193, 219, 243) sts.

**Next Row:** WS - P1; \*k1, p1; rep from \* to end.

**Next Row:** RS - K1; \*p1, k1; rep from \* to end.

**Next Row:** WS - P1; \*k1, p1; rep from \* to end.

**Next Row:** RS - Rib 4 (4, 5, 5) sts, k2tog, yo twice, skp, rib 7 (7, 13, 13) sts, k2tog, to twice, skp, rib to end.

Rib 5 (5, 7, 7) more rows.

Cast off loosely in rib (use larger needle if required).

Set in sleeves, join side seams and sleeve seams. Sew on buttons.

### SKILL LEVEL



intermediate

### WHAT YOU'LL NEED

#### Yarn

2, 3, 3, 4 balls 50gm Baby Natural 4ply in shade #203

2 buttons - Incomparable Buttons: L594

#### Needles and Tools

3.00mm knitting needles

3.25mm knitting needles

Stitch holders

Stitch markers

#### Tension

28 sts by 36 rows over Stocking Stitch on 3.25mm needles to 10cm.

#### Special Abbreviations

skp - slip 1 stitch, knit 1 stitch, pass slipped st over;



Wentworth Distributors NZ Ltd

Free phone AU: 1800 150 542

Free phone NZ: 0800 738 998

[www.naturallyyarnsnz.com](http://www.naturallyyarnsnz.com)



# INFINITE RAINBOW THROW.

*This log cabin design squares blanket are worked in individual squares, then sewn together and a border is knit on the edges to finish.*

## STITCH GUIDE

### Design Notes:

All four square types are shown in diagram form as a guide. You will be using the same main colour in all squares while changing the contrast colour as instructed. When picking up stitches in the garter stitch along the side of a square, place one stitch per garter ridge. When picking

up stitches from the cast off or cast on edge, place one stitch per bound off or cast on stitch. The video detailing the technique used to pick up and knit stitches can be found at <http://tutorials.knitpicks.com/wptutorials/picking-up-stitches/>

When changing colours, bring the new colour up underneath the old colour to prevent holes

from forming at the sides of the square.

## SQUARE TYPE 1

(Make 8 with CC as C6, 4 with CC as C1, 4 with CC as C4, 2 with CC as C5, 2 with CC as C2 and 2 with CC as C3.)

Inner square: Cast on 14 sts in MC using long tail cast on. Work 26 rows as K all sts. Cast off all sts.

**Side 1:** With RS facing, turn work 90 degrees clockwise. PU and K 14 stitches in CC. Work 12 rows as K all sts. Cast off.

**Side 2:** With RS facing, turn work 90 degrees clockwise. PU and K 21 stitches in CC. Work 12 rows as K all sts. Cast off.

**Side 3:** With RS facing, turn work 90 degrees clockwise.



PU and K 21 stitches in CC.  
Work 12 rows as K all sts. Cast off.

Side 4: With RS facing, turn work 90 degrees clockwise. PU and K 21 stitches in CC, then PU and K 7 sts in MC.  
Row 1: K7 in MC, K 21 in CC.  
Row 2: K21 in CC, K7 in MC.  
Repeat rows 1 and 2 five more times.  
Cast off in pattern.

## SKILL LEVEL



intermediate

## WHAT YOU'LL NEED

### Yarn

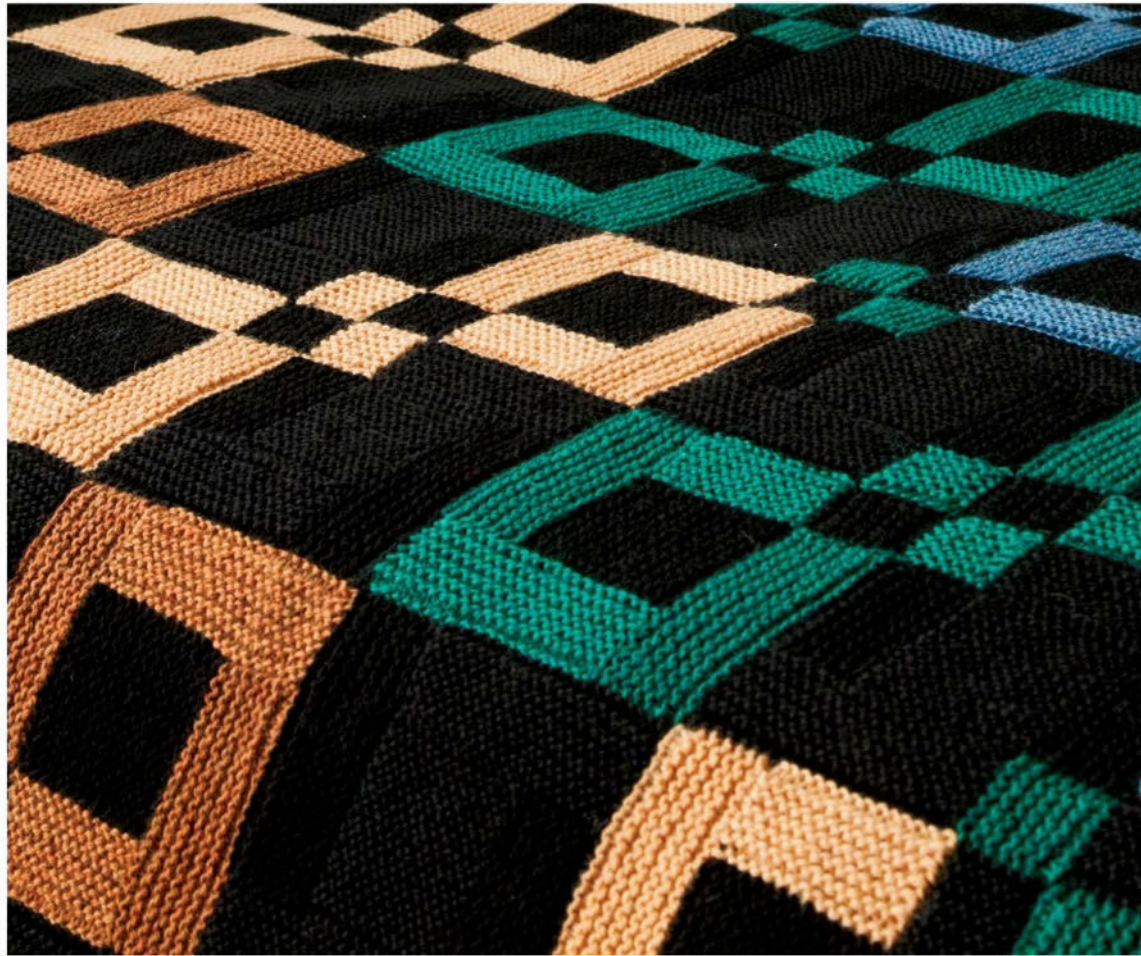
24 balls 50gm Knit Picks Wool of the Andes main colour (MC) Coal 23420  
2 balls each 50gm Knit Picks Wool of the Andes  
C1 Amethyst Heather 23900  
C2 Baltic Heather 25648  
C3 Golden Heather 25979  
C4 Persimmon Heather 24280  
C5 Garnet Heather 25633  
3 balls 50gm Knit Picks Wool of the Andes C6 Everglade Heather 25643

### Needles

4.00mm circular needle  
40cm, 100cm  
Wool sewing needle

### Tension

18sts by 36 rows over  
garter st after blocking  
to 10cm



### SQUARE TYPE 2

(Make 2 with CC as C5, 4 with CC as C2 and 4 with CC as C3.)

**Inner square:** Cast on 14 sts in MC using long tail cast on. Work 26 rows as K all sts. Cast off all sts.

**Side 1:** With RS facing, turn work 90 degrees clockwise. PU and K 14 stitches in CC. Work 12 rows as K all sts. Cast off.

**Side 2:** With RS facing, turn work 90 degrees clockwise. PU and K 21 stitches in CC. Work 12 rows as K all sts. Cast off.

**Side 3:** With RS facing, turn work 90 degrees clockwise. PU and K 7 stitches in MC, then PU and K 14 sts in CC.  
**Row 1:** K 14 in CC, K7 in MC.

**Row 2:** K7 in MC, K 14 in CC. Repeat rows 1 and 2 five more times.  
Cast off in pattern.

**Side 4:** With RS facing, turn work 90 degrees clockwise. PU and K 21 stitches in CC, then PU and K 7 sts in MC.

**Row 1:** K7 in MC, K 21 in CC.  
**Row 2:** K21 in CC, K7 in MC. Repeat rows 1 and 2 five more times.  
Cast off in pattern.

### SQUARE TYPE 3

(Make 2 with CC as C1, 2 with CC as C4, 4 with CC as C5, 6 with CC as C2 and 6 with CC as C3.)

**Inner square:** Cast on 14 sts in MC using long tail cast on. Work 26 rows as K all sts. Cast off all sts.

**Side 1:** With RS facing, turn work 90 degrees clockwise. PU and K 14 stitches in MC. Work 12 rows as K all sts. Cast off.

**Side 2:** With RS facing, turn work 90 degrees clockwise. PU and K 21 stitches in MC. Work 12 rows as K all sts. Cast off.

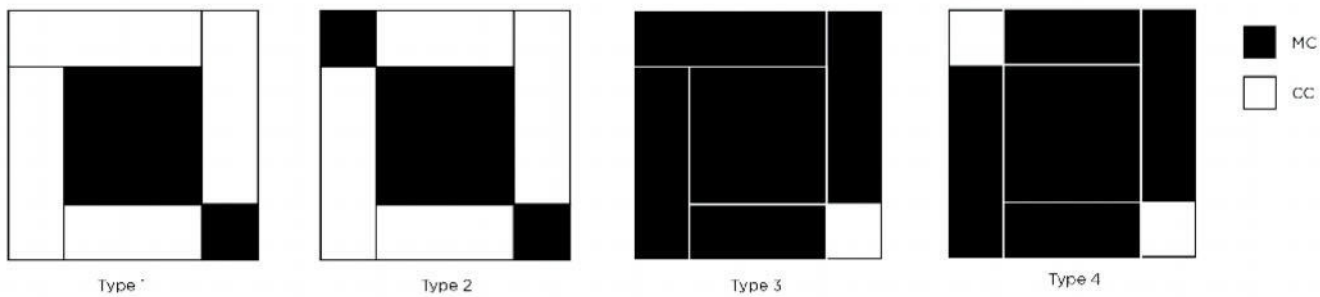
**Side 3:** With RS facing, turn work 90 degrees clockwise. PU and K 21 stitches in MC. Work 12 rows as K all sts. Cast off.

**Side 4:** With RS facing, turn work 90 degrees clockwise. PU and K 21 stitches in MC, then PU and K 7 sts in CC.

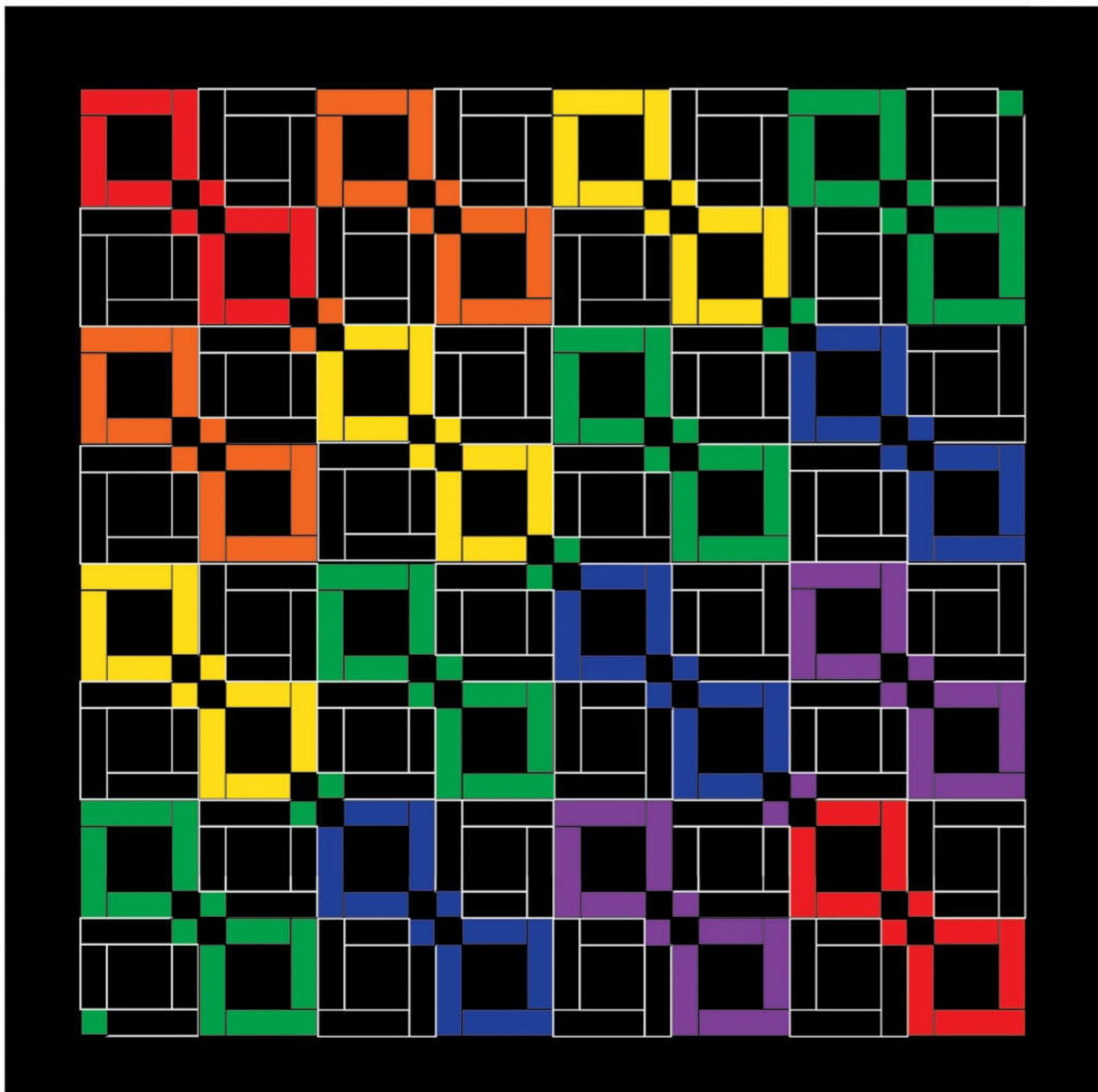
**Row 1:** K7 in CC, K21 in MC.  
**Row 2:** K21 in MC, K7 in CC. Repeat rows 1 and 2 five more times.  
Cast off in pattern.



## SQAURE DIAGRAMS



## BLANKET DIAGRAM



**SQUARE TYPE 4**

(Make 8 with CC as C6, 2 with CC as C1, and 2 with CC as C4.)

**Inner square:** Cast on 14 sts in MC using long tail cast on. Work 26 rows as K all sts. Cast off all sts.

**Side 1:** With RS facing, turn work 90 degrees clockwise. PU and K 14 stitches in MC. Work 12 rows as K all sts. Cast off.

**Side 2:** With RS facing, turn work 90 degrees clockwise. PU and K 21 stitches in MC. Work 12 rows as K all sts. Cast off.

**Side 3:** With RS facing, turn work 90 degrees clockwise. PU and K 7 stitches in CC, then PU and K 14 sts in MC.

**Row 1:** K 14 in MC, K 7 in CC.

**Row 2:** K 7 in CC, K 14 in MC. Repeat rows 1 and 2 five more times. Cast off in pattern.

**Side 4:** With RS facing, turn work 90 degrees clockwise. PU and K 21 stitches in MC, then PU and K 7 sts in CC.

**Row 1:** K 7 in CC, K 21 in MC.

**Row 2:** K 21 in MC, K 7 in CC. Repeat rows 1 and 2 five more times. Cast off in pattern.

Sew together squares in pattern as shown in Blanket Diagram.

Then work border.

**BORDER**

**Side 1:** With RS facing and starting at the upper right corner, PU and K 210 stitches along edge of blanket.

Work 28 rows as K all sts. Cast off all sts.

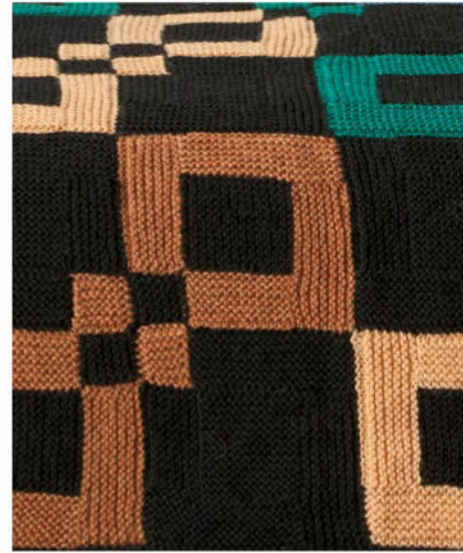
**Side 2:** With RS facing, turn blanket 90 degrees. PU and K 224 sts along edge. Work 28 rows as K all sts. Cast off all sts.

**Side 3:** With RS facing, turn blanket 90 degrees. PU and K 224 sts along edge. Work 28 rows as K all sts. Cast off all sts.

**Side 4:** With RS facing, turn blanket 90 degrees. PU and K 238 sts along edge. Work 28 rows as K all sts. Cast off all sts.

**MAKING UP**

Weave in ends, wash and block to size.



Knit Picks  
www.KnitPicks.com  
Ph: 1800 106 750

## Banksia Yarns

Shop 7 Magnolia Mall  
285 Windsor St  
Richmond NSW

0401 279 853

shop@banksiayarns.com.au  
www.banksiayarns.com.au



# knitshop.dk

Hanne  
Falkenberg

HAND KNIT KITS DENMARK

creative  
**knitting**

**Advertise here**

**Call Simon Mullen  
on (02) 4733 8482**



# LION TOY

*Designed by Patons*



MEASUREMENTS

SIZE APPROX 30CM ACROSS



## GETTING STARTED

Note: We recommend parental supervision for children under 3 years as this toy has small parts that may present a choking hazard.

## SKILL LEVEL



## WHAT YOU'LL NEED

### Yarn

4 balls 50gm Patons Cotton Blend 8ply in 7 Orange Main colour (M)  
1 ball 50gm Patons Cotton Blend 8ply in 26 Coral Colour 1 (C1)  
1 ball 50gm Patons Cotton Blend 8ply in 17 Aqua Colour 2 (C2)  
1 ball 50gm Patons Cotton Blend 8ply in 2 Black Colour 3 (C3)

### Needles and Tools

3.50mm crochet hook  
Wool sewing needle  
Polyester fibre filling  
Piece of cardboard or medium pom-pom maker

### Special Abbreviation

Dec = \* yoh and draw up a lp in next st, yoh and draw through 2 lps, rep from \* in next st, yoh and draw through all 3 lps on hook.

### Tension

Correct tension is not essential.

## WORKING PATTERN FRONT

Using 3.50mm hook and C1, make 2ch.

**Round 1:** Miss 1ch, 8dc in last ch, do not join with a sl st.

**Note:** As rem of body is worked in spiral, mark end of each round with a safety pin or movable stitch marker.

**Round 2:** (2dc in next dc) 8 times. 16dc.

**Round 3:** (2dc in next dc, 1dc in next dc) 8 times. 24dc.

**Round 4:** (1dc in next dc, 2dc in next dc, 1dc in next dc) 8 times. 32dc.

**Round 5:** (2dc in next dc, 1dc in each of next 3dc) 8 times. 40dc.

**Round 6:** (1dc in each of next 2dc, 2dc in next dc, 1dc in each of next 2dc) 8 times. 48dc. \*\*

**Note:** When changing colour, use new colour to work final lp of last st in old colour.

**Round 7:** (2dc in next dc, 1dc in each of next 5dc) 8 times, sl st in next dc, change to M, sl st in next dc. 56dc.

**Round 8:** (1dc in each of next 3dc, 2dc in next dc, 1dc in each of next 3dc) 7 times, 1dc in each of next 3dc, 2dc in next dc, 1dc in next dc, 1dc in each of next 2 sl sts. 64dc.

Cont inc 8dc in each round (staggering position of inc as before) until Front measures 30cm in diameter, working extra inc evenly in last round if necessary to end with a multiple of 6dc.

### Beg Mane

Change to C2.

**Round 1:** \* Miss 2dc, (2tr, 3dtr, 2tr) in next dc, miss 2dc, sl st in next dc, rep from \* to end.

**Round 2:** 1ch, \* 1dc in next tr, 1htr in next tr, 1tr in next dtr, 4tr in next dtr, 1tr in next dtr, 1htr in next tr, 1dc in next tr, rep from \* to end, sl st in first dc. Fasten off.

## BACK

Using M only throughout, work as for Front to \*\*.

Cont inc 8dc in each round (staggering position of inc as before) until Back measures 30cm in diameter. Fasten off.

## LEGS (MAKE 2, BEG AT FOOT)

Using 3.50mm hook and M, make 2ch.

**Round 1:** Miss 1ch, 6dc in last ch, do not join with a sl st. Note: As rem of leg is worked in a spiral, mark end of each round with a safety pin or movable stitch marker.

**Round 2:** (2dc in next dc) 6 times. 12dc.

**Round 3:** (2dc in next dc, 1dc in next dc) 6 times. 18dc.

**Round 4:** (2dc in next dc, 1dc in each of next 2dc) 6 times. 24dc.

**Round 5:** 1dc in each of next 24dc. Rep last round until Leg measures 10cm from beg, sl st in each of next 2dc. Fasten off.

## EARS (MAKE 2, BEG AT TIP)

**Note:** Count turning ch as 1tr. Using 3.50mm hook and M, make 6ch.

**Row 1:** Miss 3ch, 1tr in each ch to end. 4tr.

**Row 2:** (1dc, 1ch, 1tr) in first tr, 2tr in each tr to end. 8tr.

**Row 3:** (1dc, 1ch, 1tr) in first tr,

1tr in each st to last st, 2tr in top of turning ch. 10tr.

**Row 4:** As row 3. 12tr.

**Row 5:** (1dc, 1ch) in first tr, Dec, 1tr in each st to last 3 sts, Dec, 1tr in top of turning ch. 10 sts.

**Row 6:** As row 5. 8 sts.

Work 1 round dc around all edges of Ear, sl st in first dc. Fasten off.

## TAIL

Using 3.5mm hook and 2 strands of M tog, make a length of ch 9cm long. Fasten off, leaving enough yarn for attaching to body.

## MAKING UP

Do not press. With wrong sides together and using a flat seam, sew outer edge of back to front at base of mane, adding stuffing before completing seam.

Add stuffing to legs, then over sew top edge.

Sew on legs behind mane at lower edge of back (as pictured). Make a small pleat in base of ears, then sew in position.

Using M, make a small tassel, unravelling yarn ends so tassel is fluffy.

Attach securely to end of tail, then sew tail to centre of back.

Using C1, make 2 medium pom-poms and attach to front as pictured.

Using C3 and Satin Stitch, embroider eyes. Using C3 and Straight Stitch, embroider mouth and claws.

## Patons

Ph: 1800 337 032

[www.patonsyarns.com.au](http://www.patonsyarns.com.au)



# PUFF SKIRT

*This showpiece project requires careful crafting and a degree of patience.  
The skirt may be worn with the waistband extended to full length or folded at the waist.  
It is designed to be worn with the cable section sitting at hip level.*

## STITCH GUIDE

### Special Design Notes

1. As this pattern uses double strands of chunky yarns, it is therefore wise to use extra long (120cm) 10.00mm circular needles to accommodate the 279 stitches cast on for the base of the skirt.
  2. Graft yarn joins using needle and thread (overlap yarn ends by 3cm and use running stitch back and forth). This avoids unsightly or bulky knots and darning in skirt fabric.
  3. It is important to maintain a very firm tension throughout the main fabric and the rib band. The fabric will not achieve its dramatic "puff" if knitted at the wrong tension.
  4. Before commencing the first round, take care not to twist any stitches on the needles (otherwise this will result in a fabric twist).
  5. To avoid a gap between rounds; at the beginning of each round; K1, now pass the second stitch on the right hand needle over the stitch just knitted (as if to cast off). This action secures the circle of stitches in the round without any gaps.
- Both the main fabric and the

waistband rib require very firm tension throughout to achieve the dramatic effect of the pleats. The box pleats are created by casting off the sections of Moss stitch in between the cables, then folding and sewing in place with needle and thread. Although the cable and Moss stitch pattern is straight forward, working on circular needles with double strands of bulky yarns may be challenging for some.

## PATTERN

Using 10.00mm needles and colours 1 and 2 together, cast on 279 (319) sts, place a stitch marker. This marker is to be moved up as work progresses.

**Round 1:** RS – \* Moss 12, k6, p4, k6, Moss 12, \*\* repeat from \* to \*\* 5 (6) times, Moss 12, k6, p4, k6, Moss 11.

**Rounds 2 to 7:** As round 1.

**Round 8:** (cable twist round) \* Moss 12, C3B, p2 tog twice, C3F, Moss 12 \*\*. Repeat from \* to \*\* 5 (6) times, Moss 12, C3B, p2 tog twice, C3F, Moss 11. Work 7 rows in pattern as set.

**Round 16:** (cable twist row) \* Moss 12, C3B, p2 tog, C3F, Moss 12, \*\* repeat from \* to \*\* 5 (6) times, Moss 12, C3B, p2 tog, C3F, Moss 11. Work 7 rows in pattern as set.

**Round 24:** (cable twist row) \* Moss 12, C3B, p1, C3F, Moss 12 \*\*. Repeat from \* to \*\* 5 (6) times, Moss 12, C3B, p2 tog, C3F, Moss 11.

Work 7 rows in pattern set.

**Round 32:** (cable twist round) \* Moss 12, C3B, M1P, p1, 3CF, Moss 12 \*\*. Repeat from \* to \*\* 5 (6) times, Moss 12, C3B, M1P, p1, 3CF, Moss 11.

Work 7 rows in pattern set.

**Round 40:** (cable twist round) \* Moss 12, C3B, p2, 3CF, Moss 12 \*\*. Repeat from \* to \*\* 5 (6) times, Moss 12, C3B, p2, 3CF, Moss 11.

**Round 41 to 44:** Work 4 rows in patt as set.

**Round 45:** (make box pleat) Cast off 12 Moss, \* rib 14 (k1, p1) cast off 24 Moss \*\*. Repeat from \* to \*\*, 5 (6) times, rib 14, cast remaining 11 Moss. 98 (112) rib sts remain.

**Round 46:** Change to 7.00mm circular needles and rejoin yarns (colours 1 and 2) at beg of next round. Now work in rib as set (pulling yarns firmly when joining rib sections at points where Moss sts are cast off).

**Rounds 47 to 51:** Cont working in rib.

**Rounds 52 to 57:** Change to 4.00mm needles and 2 strands of Col 3, work 6 rows k1, p1 rib.

**Round 58:** Size A – Keeping rib pattern correct, k2 tog twice, \* rib 15, k2 tog twice, rib 16, k2 tog twice, \*\* rep from \* to \*\* one time, rib 16 (88st).

**Size B** – Keeping rib pattern correct, k2 tog twice, \* rib 14, k2 tog twice, rib 15, k2 tog twice \*\*, repeat from \* to \*\* one time, rib 14, k2 tog twice, rib 16 (100st).

## All sizes

Cont in rib until rib section (from beg) measures 29 (33)cm.

Cast off loosely and evenly in rib using 10.00mm circular needles.

**Note: it is crucial that the cast off is extremely loose to allow this garment to be pulled up over hips.**

## MAKING UP

Form the Box pleats  
With WS facing, find the centre of a cast off section of Moss st, sew this to the centre between the cable sections. Then oversew the folds formed by the Moss stitch. Do not attach box pleats (Moss stitch folds) to main body of skirt. Repeat on all other cast off Moss stitch sections.

**Jo Sharp**  
[www.josharppatterns.com](http://www.josharppatterns.com)

## SKILL LEVEL



advanced

## WHAT YOU'LL NEED

## Yarn

7, 8 balls 50gm Jo Sharp  
Silkroad Aran Tweed Col 1,  
129 Enamel  
12, 13 balls Jo Sharp Silkroad  
Ultra Col 2, 717 Clunker  
4, 4 balls 5-gm Jo Sharp  
Classic DK Wool Col 3, 327  
Navy

## Needles and Tools

4.00mm circular needles  
80cm  
7.00mm circular needles  
120cm  
10.00mm circular needles  
120cm  
1 cable needle  
1 stitch marker

## Tension

## Moss sections:

9sts and 19rows measured  
over 10cm of Moss st using  
10.00mm needles two  
strands of yarn together  
(Silkroad Ultra & Silkroad  
Aran Tweed)

## Rib section at waist:

22.5sts and 25rows  
measured over 10cm of Rib  
st using 4.00mm needles  
and two strands of Classic  
DK Wool together.

## Special abbreviations

Moss = Moss Stitch

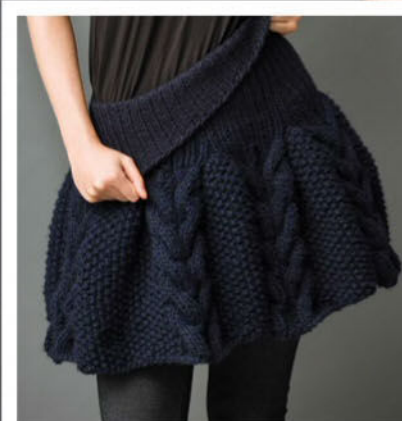
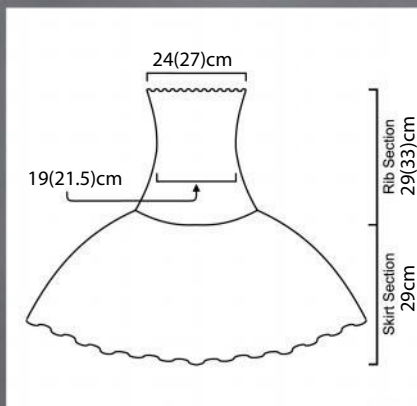
Row 1: K1, P1 across row.

Row 2: K the p sts and p the  
k sts of previous row. Repeat  
these two rows.

M1P – Pick up loop between  
sts and p into front of it (inc  
1 st).

C3B – Place next 3 sts on  
cable needle at back of work,  
k3, k3 from cable needle.

M3F – Hold next 3 sts on  
cable holder at front of work,  
k3, k3 from cable needle.



## MEASUREMENTS

TO FIT WAIST	70-75	80-85CM
<b>FINISHED FIT HIP</b>	<b>83</b>	<b>93CM</b>
GARMENT LENGTH	58	62CM





# SHIFTING SANDS CABLED SCARF

*Beautiful soft effect by using 2 strands together of subtle colour changing mohair.*



## WORKING PATTERN SCARF

Using 7.00mm needles, cast on 44 sts with 2 strands together.

### Begin cable pattern

**Row 1:** Knit.

**Row 2:** Purl.

**Row 3:** K4 \*C6B, rep from \* to last 4 sts, k4.

**Row 4:** Purl.

**Row 5:** Knit.

**Row 6:** Purl.

**Row 7:** Knit.

**Row 8:** Purl.

**Row 9:** k1, C6F, rep to last st, k1.

**Row 10:** Purl.

**Row 11:** Knit.

**Row 12:** Purl.

Last 12 Rows form cable pattern.

Repeat last 12 rows till work measures approximately 140cm or length desired, ending with a row 5 or 11  
Cast off very loosely.

## MAKING UP

Sew in ends.

**The Wool Inn**  
Shop 14 NK Centre  
450 High St, Penrith  
Ph: 02 4732 2201  
[www.the-wool-inn.com.au](http://www.the-wool-inn.com.au)

## MEASUREMENTS

WIDTH: 20CM

LENGTH: 140CM

## SKILL LEVEL



## WHAT YOU'LL NEED

### Yarn

4 x 25gm balls Katia Silk-Mohair

### Needles and Tools

7.00mm knitting needles  
Cable needle (CN)

### Special Abbreviations

C6B slip 3 sts onto cable needle (CN) and hold at back of work, k3 then k3 from CN

C6F slip 3 sts onto cable needle (CN) and hold at front of work, k3 then k3 from CN

### Tension

22 sts over cable pattern to 10cm

# creative knitting

Pay less than  
\$7.50 per issue

- Over 25 patterns per issue
- All the latest trends and ideas
- Easy to follow step-by-step instructions
- All Australian products and patterns
- Shopping guide
- Knitting, crochet and macramé
- Heaps of tips, tricks and ideas



**SAVE**  
**25% off**  
**cover price**

Other advantages  
include...

- ✓ FREE home delivery
- ✓ Guaranteed rates
- ✓ Receive your magazines before they go on-sale
- ✓ Receive a full money-back guarantee on the remainder of your subscription should you wish to cancel at any time



**FREE POST**

Woodlands Publishing  
Reply Paid 8035, Glenmore Park 2745



**CALL**

(02) 4722 2260



**FAX**

(02) 4733 8583

**@ EMAIL**

subs@woodlandspublishing.com.au

Simply fill out the coupon, phone, fax or email (COMPLETE IN BLOCK LETTERS) ♦ DENOTES MANDATORY FIELDS

☐ YES, PLEASE SEND ME THE NEXT 6 ISSUES OF **CREATIVE KNITTING** FOR ONLY \$44.95 (CK1)

Name: Mr/Mrs/Ms/Miss♦

State♦:

Postcode♦:

Phone: Home♦ ( )

Address♦:

Mobile:

Suburb/Town♦:

Email:

#### EASY PAYMENT OPTIONS:

1. I enclose a cheque/money order made payable to Woodlands Publishing Pty Ltd (ABN 30 115 093 162) for \$\_\_\_\_\_

2. Please debit my: ☐ Visa ☐ MasterCard

Card no: \_\_\_\_\_ / \_\_\_\_\_ / \_\_\_\_\_ Expiry date: \_\_\_\_\_ / \_\_\_\_\_

Cardholder's name:

Signature:

Prices include GST. \*Subscriptions will start with the first available issue. Existing subscriptions will simply be extended. If your order is cancelled before all issues are received, payment will be pro-rated over the total number of issues available as part of the offer for the purpose of calculating any refund due. Overseas customers will be charged an additional \$7.50 per issue.



# GLACIER PEAK HAT

*This basic hat has a fun colour work pattern to jazz it up.  
Design by Knit Picks.*

## STITCH GUIDE

**Design Notes:** If you, like me, tend to knit your stranded colour work more tightly than your ordinary stockinette, consider going up a needle size for the colour work portion.

K2 P2 Rib (in the round over a multiple of 4 sts)

**Round 1:** (K2, P2) to end.  
Repeat Round 1 for K2P2 Rib.

## HAT

Using circular needle and main colour cast on 88 (96, 104, 112) sts.

Work in K2P2 Rib for 4cm.

K 5 (5, 8, 10) Rounds in main colour.

**Begin working from Colorwork Chart k all sts.**

When all 22 Rounds of Colorwork Chart are complete, break all colours

except main colour.

K 6 (7, 10, 11) Rounds in main colour.

## Crown Decreases

**Dec Round 1:** (K6, K2tog) to end.

K two Rounds.

**Dec Round 2:** (K5, K2tog) to end.

K two Rounds.

**Dec Round 3:** (K4, K2tog) to end.

K one Round.

**Dec Round 4:** (K3, K2tog) to end.

K one Round.

**Dec Round 5:** (K2, K2tog) to end.

K one Round.

**Dec Round 6:** (K1, K2tog) to end.

K one Round.

**Dec Round 7:** (K2tog) to end.

Break yarn leaving a 20cm tail. Draw through remaining sts and cinch tight.

## MAKING UP

Weave in ends, wash and block if desired. Make a pom-pom with one or more colours of yarn and tie it to the top of the hat.

## Knit Picks

[www.KnitPicks.com](http://www.KnitPicks.com)

Ph: 1800 106 750

## SKILL LEVEL



intermediate

## WHAT YOU'LL NEED

### Yarn

1 ball 50g each Knit Picks  
Reverie  
MC Natural 26113  
C1 Silver 26581  
C2 Navy 26582  
C3 Gemstone 26114

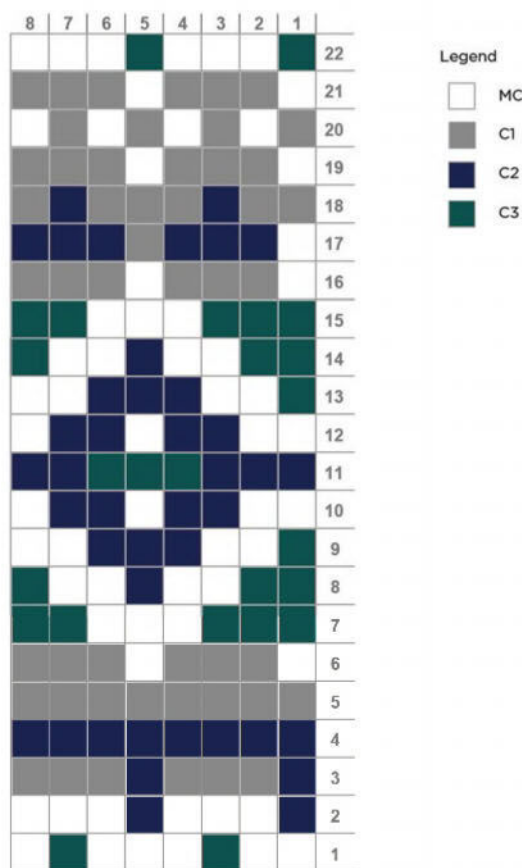
### Needles and Tools

5.00mm set double  
pointed needles  
5.00mm circular needles  
40cm  
Wool sewing needle  
Stitch marker  
Pom-pom maker

### Tension

20 sts by 28 rows over  
stranded St st in the  
round, blocked to 10cm

## COLOURWORK CHART





## MEASUREMENTS

CIRCUMFERENCE	44.5	48.5	52	57CM
LENGTH	21	21.5	23.5	24.5CM



# MOSSY LACE COWL

## GETTING STARTED

Cowl is worked in one piece from the top down.

**Seed Stitch (worked over an even number of stitches)**

**Row 1:** RS - \*K1, P1; repeat from \* across.

**Row 2:** \*P1, K1; repeat from \* across

Repeat Rows 1 and 2 for Seed St.

## Yarn Over Pattern

**Row 1:** K2 \*yo, K2tog; repeat from \* to last 2 sts, k2

Repeat Row 1 for Yarn Over Pattern.

## WORKING PATTERN COWL

Cast on 110 sts.

Work in Seed st for 8cm ending by working a wrong side row.

Knit 3 rows Garter St

Work in Yarn Over pattern for 16cm.

Knit 2 rows Garter St.

Cast off knitwise.

## MAKING UP

Sew back seam, weave in yarn ends.

## The Ardent Alpaca

2/35 Camp St

Beechworth Vic

Ph: 03 5728 2205

[www.ardentalpaca.com.au](http://www.ardentalpaca.com.au)

## MEASUREMENTS

SIZE ONE SIZE FITS MOST

**CIRCUMFERENCE APPROX 66CM**

LENGTH 22CM

## SKILL LEVEL



intermediate

## WHAT YOU'LL NEED

### Yarn

2 balls 50gm Alpaca 8ply

### Needles and Tools

5.00mm knitting needles

### Tension

Not critical for this project

# SUBSCRIBE AND SAVE

**Save 33% off  
the cover price!**



## 4 EASY WAYS TO SUBSCRIBE



**(02) 4722 2260**  
and quote 6 issue magazine offer



**www.wpcoco.com.au**



**Fill in the form & freepost to:**  
Woodlands Publishing  
Reply Paid 8035  
Glenmore Park 2745



**Fax to: (02) 4733 8583**

creative  
**Quilter**  
contemporary • vintage • traditional

### subscription order form



I would like to subscribe to 6 issues of  
Creative Quilter starting with the next  
available issue.

#### 1. YOUR DETAILS

TITLE ☐ MR ☐ MRS ☐ MS ☐ MISS

Name \_\_\_\_\_

Address \_\_\_\_\_

State \_\_\_\_\_ Postcode \_\_\_\_\_

Email \_\_\_\_\_

Telephone (inc. area code) \_\_\_\_\_

#### 2. PLEASE TICK ONE BOX

- ☐ **Australia:** 6 Issues of Creative Quilter for AUD \$39.99
- ☐ **New Zealand:** 6 Issues of Creative Quilter for AUD \$59.99
- ☐ **Rest of the World:** 6 Issues of Creative Quilter for AUD \$79.99

Prices include GST. \*Subscriptions will start with the first available issue in May 2016.  
Existing subscriptions will simply be extended. If your order is cancelled before all  
issues are received, payment will be pro-rated over the total number of issues available  
as part of the offer for the purpose of calculating any refund due.

#### 3. METHOD OF PAYMENT

☐ Cheque/Money Order (Aust. only)

I enclose a cheque/money order made payable to  
Woodlands Publishing Pty Ltd (ABN 30 115 093 162) for \$ .....

Please debit my: ☐ Mastercard ☐ Visa

Card No

□ □ □ □ □ □ □ □ □ □ □ □ □ □ □ □

Expiry date □ □ / □ □

Cardholder name (PLEASE PRINT) \_\_\_\_\_

Signature \_\_\_\_\_ Date \_\_\_\_\_

**FREE POST:** Woodlands Publishing  
Reply Paid 8035, Glenmore Park 2745



# FISHERMAN'S RIB BERET AND MITTS

*Design by Cleckheaton*

## STITCH GUIDE

### BERET

Using 3.25mm needles cast on 98sts.

**Row 1:** k2, \* p1, k1, rep from \* to end.

Rep last row 9 times.

**Row 11:** k1, \* (k1, p1, kpk, p1) 3 times, kpk, p1, (k1, p1, kpk, p1) twice, kpk, p1, rep from \* 3 times, k1. 154 sts.

Change to 3.75mm needles.

### Begin fisherman's rib patt.

**Row 1:** WS – knit

**Row 2:** k1, \* k1b, p1, rep from \* to last st, k1.

Last 2 rows form fisherman's rib.

Cont in fisherman's rib until beret measures 15cm from beg, ending with a 2nd row.

### Shape Crown

Keeping patt correct cont as follows:

**Row 1:** WS – k1, \* k3tog, k35, rep from \* to end. 146sts.

**Note – when working k1b into all 3sts of the k3tog, insert right hand needle into all 3 loops, then before removing newly made st fully onto right hand needle, check all 3 loops are caught in the st.**

**Row 2 and all alt rows:** k1, \*k1b, p1, rep from \* to last st, k1.

**Row 3:** k2, \* k3tog, k33, rep from \* to end. 138sts

**Row 5:** k2, \* k2tog, k31, rep from \* to end. 130sts

Cont dec in this manner (working 2sts less between dec) in every foll alt row until 10sts rem.

Break off yarn, thread end through rem sts, draw up tightly and fasten off securely.

## MAKING UP

We recommend using mattress st to sew up the beret. Do not press. Join side edges to form back seam.

## MITTS (MAKE 2 ALIKE) CUFF

Using thumb method for cast on and set 3.25mm dpn, cast on 40sts, and divide evenly as possible between 3 needles. Join to work in rounds, taking care not to twist cast on edge.

**Round 1:** \* k1, p1, rep from \* to end.

Rep last round 15 times.

Change to set of 3.75mm dpn.

### Beg fisherman's rib pattern

**Round 1:** Purl

**Round 1:** \*k1b, p1, rep from \* to end.

Last 2 rounds form fisherman's rib in rounds.

Cont in fisherman's rib until mitt measures 12cm from beg ending with 2nd round.

## THUMB

**Round 1:** Using contrasting scrap yarn, (k2tog) 4 times, k1, slip these 5sts back onto left hand needle then using regular yarn, k5, purl to end of round. 36sts.

**Round 2:** (k1, p1) 3 times, k1b, patt to end \*\*

Work in fisherman's rib, beg with round 1 until mitt measures 21cm from beg, ending with a round 2.

### Shape top

**Round 1:** \* k1, p1, rep from \* to end.

**Round 2:** \* sl 1, k1, psso, (k1, p1) twice, rep from \* to end. 30sts

**Round 3:** \* k2, p1, k1, p1, rep from \* to end.

**Round 4:** \* k1, sl 1, k1, psso, k1, p1, rep from \* to end. 24sts.

**Round 5:** \* k3, p1, rep from \* to end.

**Round 6:** \* k2, sl 1, k1, psso, rep from \* to end. 18sts.

**Round 7:** \* sl 1, k1, psso, rep from \* to end. 9sts.

Break off yarn, thread end through rem sts, draw up tightly and fasten off securely.

## SKILL LEVEL



## WHAT YOU'LL NEED

### Yarn

Beret and full mitts  
3 balls 65gm  
Cleckheaton 8ply  
Superfine Merino

### Needles

3.75mm knitting needles  
3.25mm knitting needles  
3.75mm set double  
pointed needles  
3.25mm set double  
pointed needles  
Wool sewing needle

### Tension

23sts by 44 rows over  
fisherman's rib on  
3.75mm needles to 10cm

### Special abbreviations

Kpk – (k1, p1, k1) all into next st. 3sts.  
K1b – knit 1 below – insert right hand needle into centre of st one row below next st on left and needle, knit in usual manner allowing st above to slip off needle.

**THUMB**

Carefully pick up scrap yarn stitch by stitch, placing the 9sts from lower side onto one needle and the 4sts from upper side onto another needle. 13sts.

Rearrange sts evenly between 3 needles with beg of round at beg of lower sts.

**Round 1:** k8, sl 1, knit up one st at side of opening, psso, knit up another st as side opening, k3, sl 1, knit up one st at side opening, psso, knit up another st at side opening, 15sts.

Work 16 rounds stocking st.

**Shape top**

**Next Round:** \* k2tog, k1, rep from \* to end. 10sts

**Next Round:** \* k2tog, rep from \* to end. 5sts.

Break off yarn, thread end through rem sts, draw up tightly and fasten off securely.

**MAKING UP**

Do not press.

Finish all thread.

**The Wool Inn**

Shop 14 NK Centre

450 High St, Penrith

Ph: 02 4732 2201

[www.the-wool-inn.com.au](http://www.the-wool-inn.com.au)

**MEASUREMENTS**

BERET TO FIT HEADC56CM

MITTS TO FIT HANDC18CM

FULL MITT LENGTHC23CM



# SUBSCRIBE TODAY!

**AUSTRALIAN** Stitches

SAVE A MASSIVE

**40%**

That's *only* \$5.97 per issue  
(normally \$9.95)



*Other advantages include...*

✓ FREE home delivery ✓ Guaranteed rates ✓ Receive your magazines before they go on-sale ✓ Receive a full money-back guarantee on the remainder of your subscription should you wish to cancel at any time

**FREE POST**

Woodlands Publishing  
Reply Paid 8035, Glenmore Park 2745

**CALL**

(02) 4722 2260

**FAX**

(02) 4733 8583

**EMAIL**

subs@wpco.com.au

Simply fill out the coupon, phone, fax or email (COMPLETE IN BLOCK LETTERS) ♦ DENOTES MANDATORY FIELDS

☐ YES, PLEASE SEND ME THE NEXT 6 ISSUES OF **AUSTRALIAN STITCHES** FOR ONLY AUD \$39.90 (RRP \$59.70) – SAVE \$19.80!

☐ YES, PLEASE SEND ME THE NEXT 12 ISSUES OF **AUSTRALIAN STITCHES** FOR ONLY AUD \$71.64 (RRP \$119.40) – SAVE \$47.76!!

Name: Mr/Mrs/Ms/Miss\*

State\*:

Postcode\*:

Phone: Home\* ( )

Address\*:

Mobile:

Suburb/Town\*:

Email:

#### EASY PAYMENT OPTIONS:

1. I enclose a cheque/money order made payable to Woodlands Publishing Pty Ltd (ABN 30 115 093 162) for \$

2. Please debit my: ☐ Visa ☐ MasterCard

Card no: \_ \_ \_ \_ / \_ \_ \_ \_ / \_ \_ \_ \_ Expiry date: \_ \_ / \_ \_

Cardholder's name:

Signature:

Prices include GST. \*Subscriptions will start with the first available issue. Existing subscriptions will simply be extended. If your order is cancelled before all issues are received, payment will be pro-rated over the total number of issues available as part of the offer for the purpose of calculating any refund due. Overseas customers will be charged an additional \$7.50 per issue.

# GLOSSARY

## BEGINNER'S TOOL KIT

### PINS

Plastic-head pins are useful for checking tension and blocking out items. Pins with coloured heads are best because they do not get lost in your work.



### ROW COUNTER

A row counter is helpful for keeping track of rows worked, particularly where increases, decreases or other kinds of patterning occur.



### KNITTING IN ELASTIC

Elastic yarn prevents sagging in cuffs, collars and waists. You can work it in with knitting yarn on knitted or crocheted garments.



### KNITTING NEEDLES

Knitting needles are made from plastic, aluminium or wood and come in varying lengths and widths. Straight needles come in pairs and doublepointed needles come in sets of four.



### KNITTING BAG

A knitting bag is essential for those who like to knit 'on the go'. Not only is it a practical way to keep all your knitting paraphernalia together, it also helps keep the yarn clean and tangle-free.

### CIRCULAR KNITTING NEEDLES

Circular needles have two working ends joined by a thin nylon wire. They are more balanced than straight needles and allow the weight of your work to rest in your lap.



### TAPE MEASURE

A basic tape measure is essential for checking your garment measurements.

### KNITTER'S NEEDLES

Knitter's needles need to have a large eye and a blunt point so they do not split stitches when sewing up your knitting.



### STITCH GAUGE

A stitch gauge is a flat piece of metal or plastic with a ruler marked on one side and/or a window

cut out in the centre. It allows you to mark and measure easily and accurately.

### STITCH HOLDER

A stitch holder is used to secure stitches not in use. You can also use safety pins for holding a small number of stitches.



Diagram 1

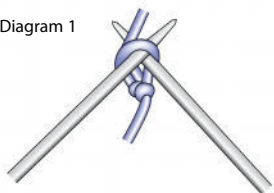
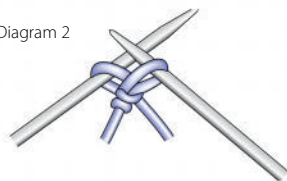


Diagram 2



## CASTING ON

Casting on is creating a row of loops on a knitting needle to form the base row for your knitting. One of the most popular methods of casting on is the cable cast on. Form a slipknot about 25cm away from the end of the yarn.

Place the slipknot on a knitting needle and pull gently to secure. Hold this needle in your left hand. Insert the right-hand needle through the slip knot. Pass the yarn over the point of the right-hand needle (see Diagram 1).

Pull a loop through the slip knot with the right-hand needle (see Diagram 2). Place this loop on the left-hand needle and gently pull the yarn to secure the stitch. For the remaining cast-on stitches, insert the right-hand needle between the slip knot and the first stitch on the left-hand needle. Wind the yarn around the point of the right-hand needle. Draw a loop through and place this loop on the left-hand needle. Continue in this manner until you have cast on the desired number of stitches.

## KNIT STITCH

Diagram 1

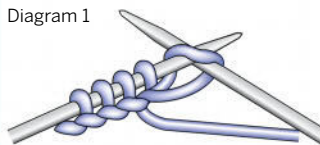


Diagram 2



Once you have cast on, you then knit into the stitches you have made to form the knitted fabric. Hold the needle with the cast on stitches in your left hand, with the loose yarn at the back of your work. Insert the right-hand needle from left to right through the front of the first stitch on the left-hand needle (see Diagram 1). Wind the yarn from left to right over the point of the right-hand needle (see Diagram 2). Draw the

yarn through the stitch to form a new stitch on the right-hand needle. Slip the original stitch off the left-hand needle, keeping the new stitch on the right-hand needle. To knit a row, repeat these steps until all the stitches have been transferred from the left-hand needle to the right-hand needle. Turn your work, transferring the needle with the stitches on into your left hand to work the next row.

## PURL STITCH

Diagram 1

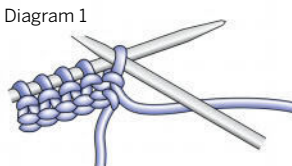


Diagram 2



The purl stitch is basically the reverse of the knit stitch. Hold the needle with the stitches on in your left hand, with the loose yarn at the front of your work. Insert the right-hand needle from right to left into the back of the first stitch on the left-hand needle (see Diagram 1). Wind the yarn from right to left over the point of the right-hand needle (see Diagram 2). Draw the yarn through the

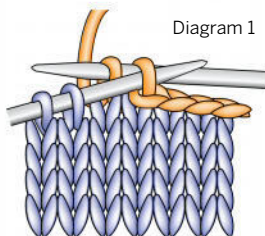
stitch to form a new stitch on the right-hand needle. Slip the original stitch off the left-hand needle, keeping the new stitch on the right-hand needle. To purl a row, repeat these steps until all the stitches have been transferred from the left-hand needle to the right-hand needle. Turn your work, transferring the needle with the stitches on into your left hand to work the next row.

## CASTING OFF

### KNITWISE

Knit two stitches. Use the point of the left-hand needle to lift the first stitch on the right-hand needle over the second, and drop it off the needle. Knit the next stitch on the left-hand needle so that there are two stitches on the right-hand needle again, and repeat. Continue in this manner until all the stitches have been worked off the left-hand needle and only one stitch remains on the right-hand needle. Cut the yarn, leaving a tail and thread the yarn through the loop and pull it firmly to fasten off.

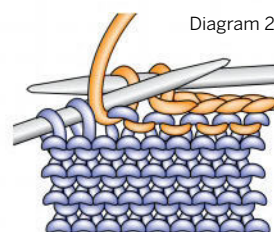
Diagram 1



### PURLWISE

Purl two stitches. Use the point of the left-hand needle to lift the first stitch on the right-hand needle over the second, and drop it off the needle. Purl the next stitch on the left-hand needle so that there are two stitches on the right-hand needle again, and repeat. Continue in this manner until all the stitches have been worked off the left-hand needle and only one stitch remains on the right-hand needle. Secure this last stitch as described in casting off knitwise.

Diagram 2



## SUBSTITUTING YARNS

If you substitute or spin a yarn for a project, you can compare the weight of the yarn to the project yarn by comparing wraps per inch. Wrap your yarn around a ruler for one inch and count the number of wraps. If you have more wraps per inch than the project yarn, your yarn is too thin; if you have fewer wraps per inch than the project yarn, your yarn is too thick.



## KNITTING TENSION

Checking your knitting tension, that is, the tightness or looseness of your knitting, is important. To check your tension, cast on 30 stitches using the recommended needle size. Work in the pattern until your work measures 10cm from the cast on edge then cast off. You now have a "swatch". Measure your tension by placing a ruler over your swatch and counting the number of stitches

across and rows down (including fractions of stitches and rows) in 10cm. Repeat these measurements two to three times on a different parts of the swatch to check your measurements. If you have more stitches and rows than called for in the instructions, you should use larger needles; if you have fewer, use smaller needles. Check your tension again before starting your project.

## PROVISIONAL CAST ON (INVISIBLE CAST ON)

Place a loose slipknot on the needle in your right hand. Hold the waste yarn next to the slipknot and around your left thumb. Hold your working yarn over your left index finger.

\*Bring the needle forward under the waste yarn, over the working yarn, grab a loop of working yarn (Diagram

1), then bring the needle to the front, over both yarns, and grab a second loop (Diagram 2). Repeat from \* until you have the desired number of stitches on your needle. When you're ready to work in the opposite direction, pick out the waste yarn to expose the live stitches.

Diagram 1

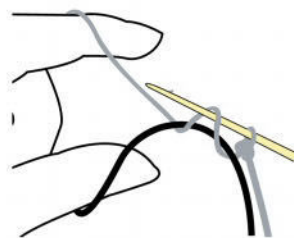
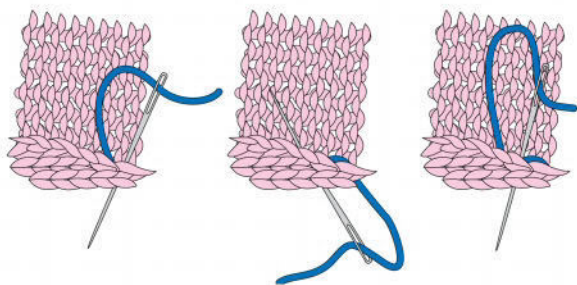


Diagram 2



Diagram 1



## BACKSTITCH

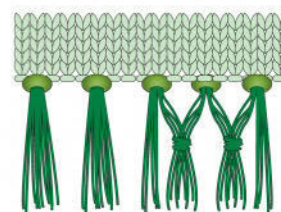
This is the stitch most commonly used for joining knitted garments. With the right sides of your work together, pin the knitted fabric together with the edges even. The seam should be sewn one full stitch from the end of the row. One stitch should be worked over every row. Thread the yarn needle. Insert the needle through both layers and sew two stitches to the left then one stitch back to the right. Keep stitches at an even distance. Continue working from right to left in this circular motion. (Diagram 1)

## TASSELS

Cut yarn twice the length of your desired tassel plus a bit extra for the knot. According to the desired thickness of the tassel, select a number of lengths of yarn. Fold the lengths of yarn in half over a crochet hook. On the wrong side, insert the crochet hook from the front to the back through the edge of the work. Grab the yarn and pull through and tighten. Trim the ends to the same length.

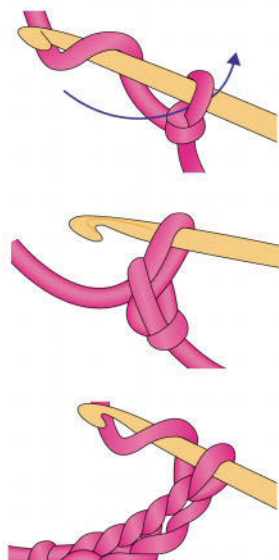
## KNOTTED FRINGE

After working a tassel, take one half of the strands from each tassel and knot them with half the strands from the neighbouring tassel. Trim.



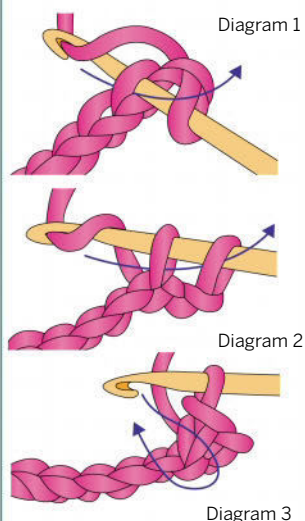


## CROCHET CHAIN



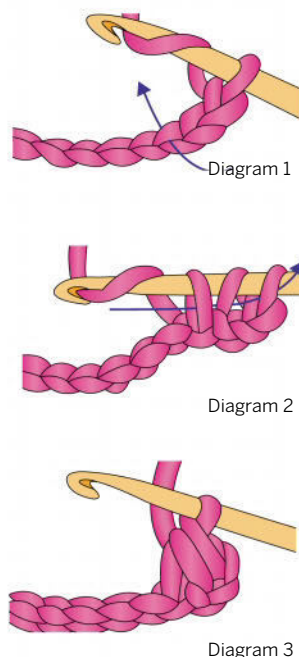
Make a slip knot on your hook. Pass the yarn over the hook and catch it with the hook and draw it through the loop on the hook. Repeat, drawing yarn through the last loop formed.

## DOUBLE CROCHET (DC) (US SINGLE CROCHET SC)



Insert the hook through the top two loops of a stitch. Pass the yarn over the hook and draw up a loop so that you have two loops on the hook (Diagram 1). Pass the yarn over the hook and draw through both loops on the hook (Diagram 2). Continue in the same way, inserting the hook into each stitch (Diagram 3).

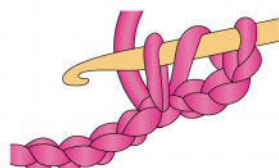
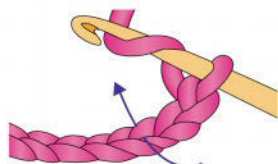
## HALF TREBLE CROCHET (HTR) (US HALF DOUBLE CROCHET HDC)



Pass the yarn over the hook. Insert the hook through the top two loops of a stitch (Diagram 1). Pass the yarn over the hook and draw up a loop so that there are three loops on the hook (Diagram 2). Draw through all three loops on the hook (Diagram 3).

## TREBLE CROCHET (TR) (US DOUBLE CROCHET DC)

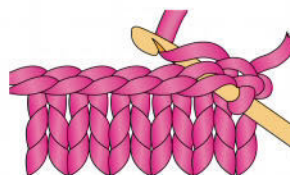
Diagram 1



Pass the yarn over the hook. Insert the hook through the top two loops of a stitch (Diagram 1). Pass the yarn over the hook and draw up a loop so that you have three loops on the hook (Diagram 2). Pass the yarn over the hook and draw it through the first two loops on the hook, pass the yarn over the hook and draw through the remaining two loops. Continue in the same way, inserting the hook into each stitch (Diagram 3).



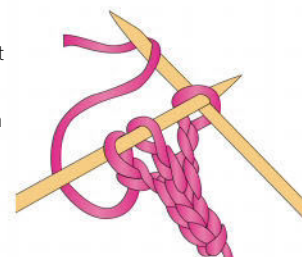
## SLIP STITCH CROCHET (SL ST)



Insert your hook into the stitch. Yarn over the hook and draw the loop through the stitch and loop onto the hook.

## I-CORD

With double-pointed needles, cast on the desired number of stitches. \*Without turning the needle, slide the stitches to the other end of the needle, pull the yarn around the back and knit the stitches as usual. Repeat from \* until your work measures the desired length



## PICKING UP DROPPED STITCHES

A dropped stitch can be picked up using a crochet hook and don't be put off by stitches that have unraveled several rows down into the work. To pick up knit stitches, insert the crochet hook into the dropped stitch, draw through the bar lying above the dropped stitch and pull it through the loop of the dropped stitch.

## KNITTING ABBREVIATIONS

<b>Alt</b> - Alternate; alternately	<b>P2tog</b> - Purl two stitches together
<b>Beg</b> - Begin; begins; beginning	<b>Patt</b> - pattern
<b>CC</b> - Contrasting colour	<b>Psso</b> - Pass slipped stitch over previous stitch
<b>Ch</b> - Chain	<b>Pb</b> - Purl through the back of the stitch
<b>Cm</b> - Centimetre/s	<b>Pwise</b> - Purlwise
<b>CO</b> - Cast on	<b>Rem</b> - Remaining
<b>Cont</b> - Continue; continuing	<b>Rep</b> - Repeat
<b>Dec</b> - Decrease; decreasing	<b>Sl 1</b> - Slip one stitch across from left needle to right needle without knitting it.
<b>Dk</b> - Double Knitting	<b>Sl 1 Purlwise</b> - Slip next stitch off left needle onto right as if to purl the stitch.
<b>Foll</b> - Follow; follows; following	<b>Sts</b> - Stitches
<b>G st</b> - Garter stitch. If knitting back and forth, knit every row. If knitting circularly, one round knit, next round purl.	<b>St st</b> - Stocking stitch. If knitting back and forth, one row knit, next row purl. If knitting circularly, knit each round.
<b>Inc</b> - Increase; increasing	<b>SSK</b> - Slip, slip knit. Makes a left slanting decrease. Slip two stitches knitwise, on at a time from the left to the right needle, then knit them together through their backs.
<b>Incl</b> - Including	<b>Tog</b> - Together
<b>K</b> - Knit	<b>WS</b> - Wrong side
<b>K1</b> - Knit one stitch	<b>Ybk</b> - Yarn back
<b>K2tog</b> - Knit two stitches together	<b>Y fwd</b> - Yarn forward - bring yarn under the needle, then over to the knitting position again, creating a new stitch.
<b>Kb</b> - Knit through the back of the stitch	<b>Yo</b> - Yarn over.
<b>Kwise</b> - Knitwise	
<b>M</b> - Make one stitch	
<b>MC</b> - Main colour. When two or more colours are used, the main colour is the yarn that is dominant.	
<b>P</b> - Purl	
<b>P1</b> - Purl one stitch	

## CROCHET TERMS &amp; ABBREVIATIONS

approx	approximately		together or skipping the stitches.
beg	begin(ning)		
CC	contrast colour	foll	follow(s)(ing)
ch	chain(s)	gm	grams
cm	centimetre(s)	htr	half treble crochet (US half double crochet hdc)
cont	continue(ing)		
dc	double crochet (US single crochet sc)	inc	increase(ing). Add stitches in a row by working in extra stitches into a chain or between the stitches.
dec	decrease(ing). Reduce the stitches in a row by either working the stitches		

## CROCHET TERMS &amp; ABBREVIATIONS CONTINUED ...

LH	left-hand	sl st	slip stitch
lp(s)	loop(s)	sp(s)	space(s)
m	metre(s)	st(s)	stitch(es)
MC	main colour	t-ch	turning chain
mm	millimetre	tog	together
oz	ounces	tr	treble (US dc)
pat(s)	pattern(s)	WS	wrong side
pm	place markers. Place or attach a loop of contrast yarn or a stitch marker as indicated.		work even/work straight. Continue in the pattern without increasing or decreasing
rem	remaining	yd	yards
rep	repeat	yo	yarn over. Wrap the yarn around the hook
rnd(s)	round(s)	*	repeat the directions following * as many times as indicated
RH	right-hand		
RS	right side		
sk	skip, miss		

## CROCHET HOOKS

METRIC	US
.60mm	14 steel
.75mm	12 steel
1.00mm	10 steel
1.50mm	6 steel
1.75mm	5 steel
2.00mm	B/1
2.5mm	C/2
3.00mm	D/3
3.50mm	E/4
4.00mm	F/5
4.50mm	G/6
5.00mm	H/8
5.50mm	I/9
6.00mm	J/10
6.50mm	K
7.00mm	K/10.5
	P
	Q
	S

## KNITTING NEEDLES

METRIC	UK	US
2mm	14	0
2.25mm	13	1
2.5mm		
2.75mm	12	2
3mm	11	
3.25mm	10	3
3.5mm		4
3.75mm	9	5
4mm	8	6
4.5mm	7	7
5mm	6	8
5.5mm	5	9
6mm	4	10
6.5mm	3	10.5
7mm	2	
7.5mm	1	
8mm	0	11
9mm	00	13
10mm	000	15

## © Creative Knitting

All work in Creative Knitting is protected by copyright. A single pattern or chart may be reproduced for personal, nonprofit use. Patterns and charts may not be reproduced to sell or distribute to others. Patterns may not be reproduced on letterhead, with another designers name attached or on the internet. Patterns may not be reproduced for classes or groups without the express permission of the publisher. Items produced using patterns may not be sold with any name other than that of the pattern designer. Contact Woodlands Publishing Pty Ltd for further information on copyright.



ALSO  
SHOP ONLINE  
www.wpcoco.com.au



\$28.99  
\$23.99



\$30.99  
\$24.99



\$30.99  
\$24.99



\$29.99  
\$24.99



\$28.99  
\$23.99



\$26.99  
\$21.99



\$30.99  
\$24.99



\$26.99  
\$21.99



\$28.99  
\$23.99



\$29.99  
\$24.99



\$26.99  
\$21.99



\$20.99  
\$17.99



\$26.99  
\$21.99



\$24.99  
\$19.99



\$29.99  
\$24.99



\$30.99  
\$24.99



\$28.99  
\$23.99



\$26.99  
\$21.99



\$26.99  
\$21.99



\$30.99  
\$24.99



\$23.99  
\$19.99



\$29.99  
\$24.99



\$24.99  
\$19.99



\$23.99  
\$19.99



\$29.99  
\$24.99



\$29.99  
\$24.99



\$23.99  
\$19.99



\$40.99  
\$31.99



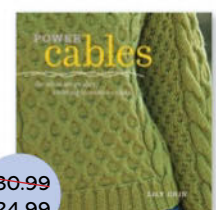
\$30.99  
\$24.99



\$30.99  
\$24.99



\$30.99  
\$24.99



\$30.99  
\$24.99



\$26.99  
\$21.99



\$28.99  
\$23.99



\$24.99  
\$19.99



\$26.99  
\$21.99



\$28.99  
\$24.99



\$33.99  
\$26.99

# SAVE UP TO 20% ON SELECTED BOOKS

**HURRY ORDER TODAY AND SAVE**

TITLE	SPECIAL DISCOUNT	TITLE	SPECIAL DISCOUNT
PLEASE TICK BOOKS REQUIRED			
<input type="checkbox"/> All New Homespun Handknit	23.99	<input type="checkbox"/> Folk Style	24.99
<input type="checkbox"/> Around the World in Knitted Socks	24.99	<input type="checkbox"/> Getting Started – Knitting Socks	19.99
<input type="checkbox"/> Art of Fair Isle Knitting	24.99	<input type="checkbox"/> Gifted: Lovely Little Things to Knit & Crochet	24.99
<input type="checkbox"/> Best of Interweave Knits	24.99	<input type="checkbox"/> Hip to Crochet	19.99
<input type="checkbox"/> Blueprint Crochet	23.99	<input type="checkbox"/> Hip to Knit	19.99
<input type="checkbox"/> Boutique Knits	21.99	<input type="checkbox"/> Knitted Lace of Estonia	24.99
<input type="checkbox"/> Classic Knits: Marianne Isager Collection	24.99	<input type="checkbox"/> Knitting in the Details	24.99
<input type="checkbox"/> Crocheted Gifts	21.99	<input type="checkbox"/> Knitting on the Road	19.99
<input type="checkbox"/> Crochet So Fine	23.99	<input type="checkbox"/> Knitted Lace	31.99
<input type="checkbox"/> Crochet in Color	24.99	<input type="checkbox"/> Knitting Wrapsody	24.99
<input type="checkbox"/> Crochet Me	21.99	<input type="checkbox"/> New England Knits	24.99
<input type="checkbox"/> Domino Knitting	17.99	<input type="checkbox"/> New Stranded Colorwork	24.99
<input type="checkbox"/> Double Stitch	21.99	<input type="checkbox"/> Power Cables	24.99
<input type="checkbox"/> Easy Knitted Socks	19.99	<input type="checkbox"/> Scarf Style	21.99
<input type="checkbox"/> Favourite Socks	24.99	<input type="checkbox"/> Sock Innovation	23.99
<input type="checkbox"/> Fearless Knitting Workbook	24.99	<input type="checkbox"/> Twisted Sisters Sock Workbook	19.99
<input type="checkbox"/> Feminine Knits	23.99	<input type="checkbox"/> Wrap Style	21.99
<input type="checkbox"/> Folk Hats	21.99	<input type="checkbox"/> Wrapped in Crochet	24.99
<input type="checkbox"/> Folk Shawls	21.99	<input type="checkbox"/> Wrapped in Lace	26.99

**TITLE** ☐ MR ☐ MRS ☐ MS ☐ MISS

Name \_\_\_\_\_

Address \_\_\_\_\_

State \_\_\_\_\_ Postcode \_\_\_\_\_

Email \_\_\_\_\_

Telephone (inc. area code) \_\_\_\_\_

Please debit my: ☐ Mastercard ☐ Visa

Card No

Expiry date   /

Cardholder name (PLEASE PRINT) \_\_\_\_\_

Signature \_\_\_\_\_ Date \_\_\_\_\_

☐ Cheque/Money Order (Aust. only) I enclose a cheque/money order made payable to

Woodlands Publishing Pty Ltd (ABN 30 115 093 162) for \$ .....

*\* All prices include GST. Please add Parcel Post \$9.95*



**POST**

PO Box 8035  
Glenmore Park NSW 2745



**CALL FAX**

Phone: 02 4722 2260  
Fax: 02 4733 8583



**@ EMAIL**

orders@wpco.com.au



ALSO  
SHOP ONLINE  
www.wpcos.com.au



\$19.99  
\$16.99



\$37.99  
\$34.99



\$19.99  
\$16.99



\$19.99  
\$16.99



\$19.99  
\$16.99



\$22.99  
\$18.99



\$22.99  
\$18.99



\$29.99  
\$24.99



\$24.99  
\$19.99



\$24.99  
\$19.99



\$24.99  
\$19.99



\$24.99  
\$19.99



\$24.99  
\$19.99



\$29.99  
\$26.99



\$39.99  
\$33.99



\$29.99  
\$24.99



\$34.99  
\$29.99



\$19.99  
\$16.99



\$29.99  
\$24.99



\$19.99  
\$16.99



\$37.99  
\$34.99



\$29.99  
\$24.99



\$24.99  
\$19.99



\$24.99  
\$19.99



\$29.99  
\$24.99



\$35.99  
\$32.99



\$19.99  
\$16.99



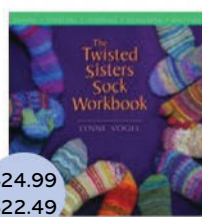
\$24.99  
\$19.99



\$12.99  
\$10.99



\$29.99  
\$24.99



\$24.99  
\$22.49



\$29.99  
\$24.99



\$28.99  
\$26.99

# SAVE UP TO 20% ON SELECTED BOOKS

**HURRY ORDER TODAY AND SAVE**

TITLE	SPECIAL DISCOUNT	TITLE	SPECIAL DISCOUNT
PLEASE TICK BOOKS REQUIRED		<input type="checkbox"/> Gifted: Lovely little things to knit and crochet	\$29.99
<input type="checkbox"/> Angels: a knitter's dozen	\$16.99	<input type="checkbox"/> Hats: a knitter's dozen	\$16.99
<input type="checkbox"/> Artful Color, Mindful Knits	\$34.99	<input type="checkbox"/> Inspired to Knit	\$24.99
<input type="checkbox"/> Babies & Toddlers: a knitter's dozen	\$16.99	<input type="checkbox"/> Kids: a knitter's dozen	\$16.99
<input type="checkbox"/> Bags: a knitter's dozen	\$16.99	<input type="checkbox"/> Knit Back in Time	\$34.99
<input type="checkbox"/> Beginner's Guide to Crochet	\$16.99	<input type="checkbox"/> Knitted Pirates, Princesses, Witches, Wizards	\$24.99
<input type="checkbox"/> Beginner's Guide to Knitting	\$18.99	<input type="checkbox"/> Knitter's at Home	\$19.99
<input type="checkbox"/> Beginner's Guide to Knitting on a Loom	\$18.99	<input type="checkbox"/> The Knitter's Handbook	\$19.99
<input type="checkbox"/> Best Interweave Knits	\$24.99	<input type="checkbox"/> Knitting Experience 3: Color	\$24.99
<input type="checkbox"/> Best of Knitter's: Arans & Celts	\$19.99	<input type="checkbox"/> A Stitch in Time: Heirloom Skills	\$32.99
<input type="checkbox"/> Best of Knitter's: Guy Knits	\$19.99	<input type="checkbox"/> Scarves: a knitter's dozen	\$16.99
<input type="checkbox"/> Best of Knitter's: Jackets for work & play	\$19.99	<input type="checkbox"/> Socks Socks Socks	\$19.99
<input type="checkbox"/> Best of Knitter's: Shawls & Scarves	\$19.99	<input type="checkbox"/> Twenty to Make – Eco-Friendly Knits	\$10.99
<input type="checkbox"/> Caps in Felt, Knitting & Crochet	\$19.99	<input type="checkbox"/> Twisted Sisters Knit Sweaters	\$24.99
<input type="checkbox"/> Crochet in Color	\$26.99	<input type="checkbox"/> Twisted Sisters Sock Workbook	\$22.49
<input type="checkbox"/> Crochet – Made Easy	\$33.99	<input type="checkbox"/> Vintage Modern Knits	\$24.99
<input type="checkbox"/> Encyclopaedia of Knitting and Crochet Blocks	\$24.99	<input type="checkbox"/> Wrapped in Crochet	\$26.99

TITLE ☐ MR ☐ MRS ☐ MS ☐ MISS

Name \_\_\_\_\_

Address \_\_\_\_\_

\_\_\_\_\_

State \_\_\_\_\_ Postcode \_\_\_\_\_

Email \_\_\_\_\_

Telephone (inc. area code) \_\_\_\_\_

Please debit my: ☐ Mastercard ☐ Visa

Card No

Expiry date   /

Cardholder name (PLEASE PRINT) \_\_\_\_\_

Signature \_\_\_\_\_ Date \_\_\_\_\_

☐ Cheque/Money Order (Aust. only) I enclose a cheque/money order made payable to

Woodlands Publishing Pty Ltd (ABN 30 115 093 162) for \$ .....

*\* All prices include GST. Please add Parcel Post \$9.95*



**POST**

PO Box 8035  
Glenmore Park NSW 2745



**CALL FAX**

Phone: 02 4722 2260  
Fax: 02 4733 8583



**@ EMAIL**

orders@wpco.com.au



# STORE DIRECTORY

*Wherever you are in the country, and whatever  
you need for your knitting, find it here*

## NSW and ACT

### Alpaca Ultimate

130 Davis Lane  
Yass NSW 2582  
Ph: 02 6227 3158 or 0429 783 575  
Email: sales@alpacaultimate.com.au  
www.alpacaultimate.com.au

### Cherryhills

Shop 7 The Pennant Arcade  
354 Pennant Hills Rd.  
Pennant Hills NSW 2120  
Ph: 02 9484 0212  
Email: pczerney@unwired.com.au

### Galifrey Alpaca Textiles

PO Box 326, Braidwood NSW 2622  
Ph: 02 4847 5139 Fax: 02 4847 5129  
Mob: 0412 719 834  
Email: jfrederick@galifrey.com.au  
www.galifrey.com.au

### Greta's Handcraft Centre

321 Pacific Highway  
Lindfield NSW 2070  
Ph: 02 9416 2489  
Fax: 02 9924 2434 Email:  
vivienne@gretashandcraft.com.au  
www.gretashandcraft.com.au

### Gulgee Woolshed

6 Henry Lawson Dr,  
Mudgee NSW 2850  
Ph: 02 6373 3589  
Mob: 0428 733 589  
Fax: 02 6373 3460  
Email: marianne@gmail.com  
www.gulgee.com.au

### The House of Alpaca

PO Box 107 Crookwell NSW 2583  
Ph: 0409 986 235 Email:  
thehouseofalpaca@bigpond.com  
www.thehouseofalpaca.com.au

### Nundle Woollen Mill Pty Ltd

1 Oakenville Street  
Nundle NSW 2340  
Ph: 1300 686 353  
Email: woollenmill@nundle.com  
www.nundle.com

### Stitch N Time

2/55 Colbee Court, Phillip ACT 2606  
Ph: 02 62828383

### Spin'N'Knit Fibre Design

Yellow Box, 796 Mayfield Road  
Tarago NSW 2580  
Ph/Fax: 02 4849 4262  
Email: info@spinnknit.com.au or  
wyntaissa@optusnet.com.au

### Waratah Fibres

PO Box 55, Bundanoon NSW 2578  
Ph: 02 4883 6138  
Email: helen@waratahfibres.com.au  
www.waratahfibres.com.au

### Wool Addiction

"The Penders", Shop 3  
20 Station Street, Bowral NSW 2576  
Ph 02 4862 4799  
www.wooladdiction.com.au

### The Wool Inn

Shop 14, NK Centre  
450 High St, Penrith NSW 2750  
Ph: 02 4732 2201  
Fax: 02 4721 0416  
Email: anitab@the-wool-inn.com.au  
www.the-wool-inn.com.au

## Vic

### Alex's Knit & Stitch

87 Grant St, Alexandra Vic 3714  
Ph: 03 5772 1460  
Email: alexsknitstitch@gmail.com  
www.k1p1.com.au

### The Ardent Alpaca

2/35 Camp Street  
Beechworth Vic 3747 Australia  
Ph: 61 (0)3 5728 2205  
Email: info@ardentalpaca.com.au  
www.ardentalpaca.com.au

### Bacchus Marsh Wool Shop

5 Gell Street  
Bacchus Marsh Vic 3340  
Ph: 03 5367 1514

### Bendigo Woollen Mills

4 Lansell Street, Bendigo Vic 3550  
Ph: 03 5442 4600 Fax: 03 5442 2918  
Email: order@bendigowoollenmills.com.au  
www.bendigowoollenmills.com.au

### Country Folk

Arts Crafts Gifts & Gardens  
21 High Street, Mansfield Vic 3722  
Ph: 03 5775 2044  
www.countryfolk.com.au

### Craftee Cottage

Shop 5, 52-54 Atherton Road  
Oakleigh VIC 3166  
Ph: (03) 9568 3606  
Fax: (03) 9564 8217  
Email: info@crafteecottage.com.au  
Web: www.crafteecottage.com.au

### Janique of Chelsea

402 Nepean Hwy, Chelsea Vic 3196  
Ph: 03 9776 1155  
Fax: 03 9585 5141

### knitalpaca

3695 Colac-Lavers Hill Rd  
Ferguson Vic 3237  
Ph: 03 5235 9208 or 0417 399 565  
Email: info@knitalpaca.com.au  
www.knitalpaca.com.au

### Knitting Yarns by Mail

114 Fox & Fancles Rd  
Boolarra South  
Vic 3870  
Ph: 0408 992 927  
Email: alison@knittingyarns.com.au  
www.knittingyarns.com.au

### Patons

Level 7  
409 St Kilda Road  
Melbourne Vic 3004  
Ph: 1800 333 642  
www.patons.biz

### Pick Up Stitches

46 Piper St  
Kyneton Vic 3444  
Ph: 03 5422 6614

### Sassafras Wool Store

Shop 2  
372 Mt Dandenong Tourist Rd  
Sassafras Vic 3787  
Ph: 03 9755 2510 Email:  
sassafraswoolstore@bigpond.com.au  
www.sassafraswoolstore.com.au

### Stitchery Blue

Shop 1  
91 Ferguson St  
Williamstown Vic 3016  
Ph: 03 9397 2005  
Email: stitcheryblue@bigpond.com  
www.stitcheryblue.com.au

### Swallow Needle Mfg. Co.

PO Box 2768  
Cheltenham Victoria  
Ph: 03 9583 2254 or  
03 9583 8124 or 1  
800 635 216  
Email: sales@arnos.com.au  
www.swallowknit.com

**Tailored Strands**

PO Box 368, Creswick VIC 3363  
120 Ewan Charlesons Rd  
Allendale VIC 3364  
Ph: 03 5345 6169  
Fax: 03 5345 6187  
Email: info@tailoredstrands.com.au  
www.tailoredstrands.com.au

**Tarndwarncoort Polwarth Wool & Country Living**

Tarndwarncoort, 50 Roseneath Rd,  
Warncoort Vic 3243  
Ph: 03 5233 6241  
Email: wendydennis@iprimus.com.au  
www.tarndwarncoort.com

**Twisted Threads**

106 Ryrie Street, Geelong Vic 3220  
Ph: 03 5221 0099 Fax: 03 5221 8617  
Email: mandy@twistedthreads.com.au

**Wired for Fibre**

PO Box 1 Highbett Vic 3190  
Ph: 0410 195 801  
Email: wifi@wiredforfibre.com.au  
www.wiredforfibre.com.au

**Wondoflex Yarn Craft Centre**

1353 Malvern Road, Malvern Vic 3144  
Ph: 03 9822 6231  
Email: enquiries@wondoflex.com.au  
www.wondoflex.com.au

**Qld****Biggan Design Pty Ltd**

PO Box 2046  
Fortitude Valley BC QLD 4006  
Ph: 07 3852 1518  
Email: hd@biggandesign.com  
www.biggandesign.com

**Creative Craft Class**

Noosa & Brisbane  
Ph: 07 5470 2500  
Email: info@creativecraftclass.com  
www.creativecraftclass.com

**Knitters Addiction**

Margaret St  
Toowoomba QLD 4350  
Mob: 0400 013 407  
Email: sales@knittersaddiction.com  
www.knittersaddiction.com

**Tangled Yarns**

Studio A  
9 Chester Street  
Newstead QLD 4006  
Ph: 07 3666 0276  
Mob: 0404 087 210  
Email:  
tangled@tangledyarns.com.au  
www.tangledyarns.com.au

**The Mountain Spinnery**

148 Boundary Road,  
Bardon Qld 4065  
Ph: 07 33696399 (shop) or  
07 32898263 (after hours)  
Fax: 07 32898263  
Email: info@mountainspinnery.com.au  
www.mountainspinnery.com.au

**Yay! for Yarn**

PO Box 5772  
Brendale Qld.4500  
P/F 07 3264 7384  
Email: info@yayforyarn.com.au  
www.yayforyarn.com.au

**SA****Barbs Sew & Knits**

2 Byron Street Glenelg SA 5045  
Ph: 08 82947441  
barb@barbssewandknits.com.au

**Highgate Needle Nook**

Shop 4  
453 Fullarton Road  
Highgate SA 5063  
Ph/Fax: 08 8271 4670  
www.needlenook.com.au  
heatherb@needlenook.com.au

**The Yarnbarn**

"Zanatta Crt"  
163c St Bernard's Rd  
Rostrevor 5073  
Ph: 08 8365 9654  
www.theyarnbarn.com.au

**WA****Beads @ Bijoux**

Homemaker Center  
Albert Lane (Off Albert Rd)  
Bunbury WA 6230  
Ph: 08 9791 1522  
www.beadsatbijoux.com.au

**Crossways Wool & Fabrics**

Shop 15, Cnr Rokeby & Bagot Rds  
Subiaco WA 6008  
Ph/Fax: 08 9381 4286  
Email: sales@woolshop.com.au  
www.woolshop.com.au

**Majestic Merino**

Shop 1 & 3 Palm Court  
69 Strickland Street, Denmark WA  
Ph: 08 9848 3678  
Email: info@majesticmerino.com or  
majmer@bigpond.com  
www.majesticmerino.com

**Yarns on Collie**

Shop 3, 7-23 Collie St  
Fremantle WA 6160  
Ph/Fax: 08 9335 4455  
Email: sales@woolshop.com.au  
www.woolshop.com.au

**Tas****The Wool Shop Pty Ltd**

58 Main Road  
Moonah Tas 7009  
Ph: 03 6278 1800  
Email: woolsuppliers@bigpond.com  
www.woolsuppliers.com.au

**National****Felting Finishing Wash – Stockists**

Garments & Gadgets Bright Vic  
Ph: 0419 212 476  
Felt Fine East Dunns Creek NSW  
Ph: 02 4938 5669  
Highland Felting & Craft Supplies  
Railton Tas 03 6496 1942

Libby's Aussie Wool Cooroy Qld

Ph: 07 5447 0650

Lara Downs Mohair & Merino  
Balliang Vic 0417 549 213

Milly Moo Crafts Smoky Bay SA  
Ph: 0400 196 185

Nundle Woollen Mills Nundle NSW  
Ph: 02 6769 3330

Oatlands Handmade Tas  
Ph: 036254 1391

Tenterfield Carding & Crafts  
Ph: 02 6737 5558

Shiloh Wool Drysdale Vic  
Ph: 03 5251 2497

Tasmanian House of Fibre Railton  
Ph: 03 6496 1942

The Emporium Sheffield Tas  
Ph: 03 6491 2404

Uralla Wool Room NSW  
Ph: 02 6778 4226

Woolsey Trading Post, Geelong West  
woolseytradingpost@bigpond.com

**New Zealand****South Seas Knitting**

20 Livingstone St  
Westmere Auckland 1022  
New Zealand  
www.southseasknitting.com  
info@southseasknitting.com  
Ph: +64 9 360 1188

**Touch Yarns Ltd**

PO Box 213, Alexandra 9340  
27 Fache St, Clyde  
Central Otago, New Zealand  
Ph/fax 0064 3 449 2022  
www.touchyarns.com

**Wentworth Distributors NZ Ltd**

FREE Phone NZ: 0800 738 998  
FREE Phone AU: 1800 150 542  
www.naturallyyarnsnz.com

**Yarn Traders Ltd**

996 Baton Valley Road  
RD1, Motueka 7196 New Zealand  
Ph: +64 27 246 3186  
Fax: +64 3 974 9856  
Email: helen@yarntraders.co.nz  
www.yarntraders.co.nz

**Internet****The Yarn Queen**

Ph: 09 836 7285  
Email: jo@theyarnqueen.co.nz  
www.theyarnqueen.co.nz

**Tracey Lee**

Ph: 0422 425 335  
tracey@traceylee.net  
www.traceylee.net





**Yarnsoft**

Sarah  
Ph: 0438 360 299  
Email: sales@yarnsoft.com.au  
www.yarnsoft.com.au



# NEXT ISSUE

## Creative Knitting 57

-  Step-by-step instructions
-  Creative patterns for winter
-  Knitting ideas for all skill levels
-  Patterns for the whole family

## ON SALE SOON



*creative*  
**knitting**

PUBLISHER Simon Mullen

TECHNICAL EDITOR Annlee Butler

SUB EDITOR Anita Mullen

CREATIVE DIRECTOR Hayley Jagger

PHOTOGRAPHY Alex Mullen,  
Naturally Yarns, Cleckheaton, Patons, Panda  
Yarns, Shepherd, Jo Sharp yarns

JUNIOR DESIGNER Tara Mullen

### EDITORIAL ENQUIRIES

Ph: 02 4733 8482 Fax: 02 4733 8583

Email: [simon@wpco.com.au](mailto:simon@wpco.com.au)

### NATIONAL ADVERTISING MANAGER

Simon Mullen

Ph: 02 4733 8482 Fax: 02 4733 8583

Email: [simon@wpco.com.au](mailto:simon@wpco.com.au)

### ADVERTISING COORDINATOR

Anita Mullen

Email: [anita@wpco.com.au](mailto:anita@wpco.com.au)

### ADVERTISING ENQUIRIES

Ph: 02 4733 8482

Email: [adcopy@woodlandspublishing.com.au](mailto:adcopy@woodlandspublishing.com.au)

### SUBSCRIPTION ENQUIRIES

Janie Medbury

Ph: 02 4722 2260 Fax: 02 4733 8583

Email: [subs@woodlandspublishing.com.au](mailto:subs@woodlandspublishing.com.au)

Website: [www.wpco.com.au](http://www.wpco.com.au)

For back issues call 02 4722 2260

### Retail Sales/Overseas Distribution Enquiries

Simon Mullen

Email: [simon@woodlandspublishing.com.au](mailto:simon@woodlandspublishing.com.au)

### PUBLISHED BY

Published, promoted and distributed  
by Woodlands Publishing Pty Ltd  
(ACN 115 093 162). All rights reserved.

### Woodlands Publishing Pty Ltd

PO Box 8035, Glenmore Park NSW 2745

Woodlands Publishing Pty Limited has taken reasonable steps to secure the copyright in the articles and photographs reproduced in this publication. We secure from each article's author a warranty that the copyright subsisting in the article is the author's original work, or the author has obtained all necessary rights, licences and permissions, and publishing it in this publication will not infringe any third party's copyright. Articles are published relying on the representations and warranties of the authors of the articles and without our knowledge of any infringement of any third party's copyright. All material in this magazine is copyright and cannot be reproduced in part or in full without written permission from the publisher. Prices and dates quoted in this issue were correct at the time of going to press but may be subject to variation.



匠

Takumi®

## A blissful knitting experience.

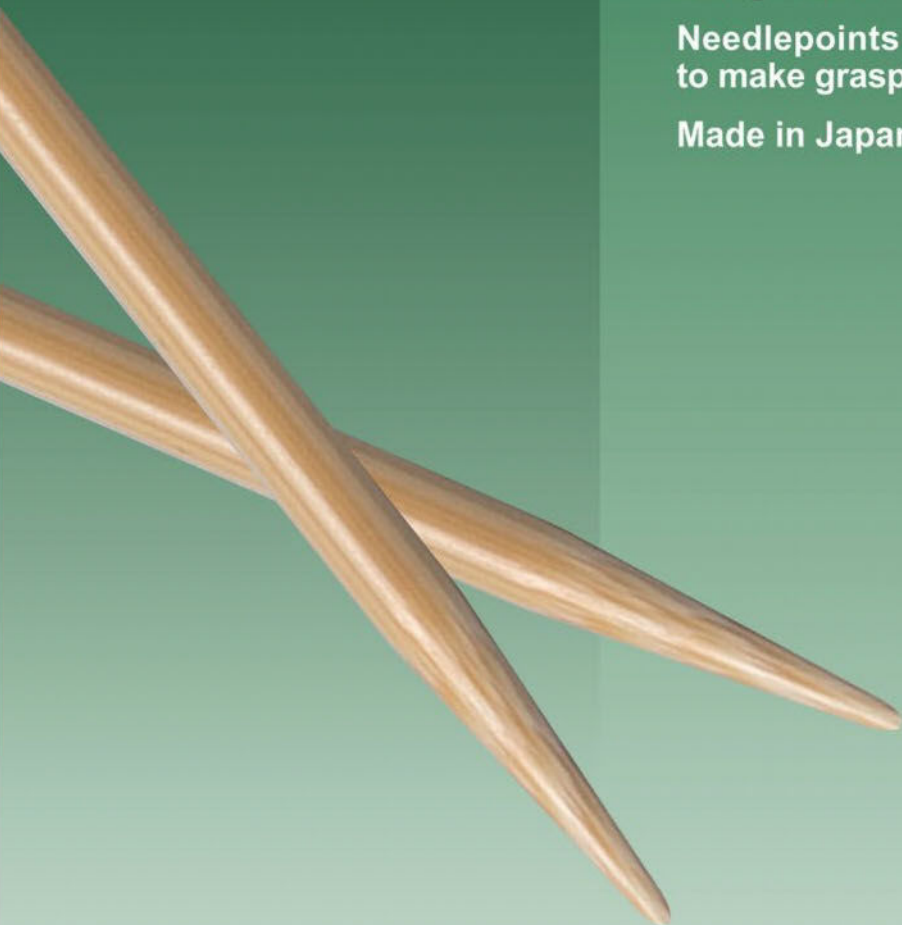
**“Takumi®”  
bamboo knitting needles.**

Carefully select materials cultivated in cold climates.

A lovely, smooth surface painstakingly refined using technology with a natural touch.

Needlepoints crafted with the utmost precision to make grasping and weaving threads a breeze.

Made in Japan





# ASHFORD WHEELS & LOOMS

Christmas wish list ideas from Ashford...

## Blending board

Create beautiful rolags for spinning or felting.

Carding area  
30 x 30cm.



## Joy 2

So portable and light.  
Choose single or  
double treadle.  
Carry bag included.



## Samplet Loom

Sample new yarns  
and techniques.  
25cm weaving width.



Just add yarn!

## Needle felting starter kit

Includes book, needles, fibre, foam  
and water soluble fabric.



## Beginners kits

Kits include  
everything you need  
to make the projects.  
Choose rooster, bugs,  
flowers or sheep.



## NEW Fluro and Rainbow bright 100gm packs

Perfect for all your fibre  
crafts - needle felting,  
wet felting, spinning,  
weaving and knitting.



## Beagle and Butterfly kits

Kits include everything  
you need to make the  
projects.

## Hand carders

Classic with 72 or 108 point cloth  
Student or mini with 72 point cloth  
Flick carder 72 point cloth



## Welcome to Ashford Wheels & Looms YouTube Tutorial Channel!

To make learning easier, we have been busy making clear,  
easy-to-follow educational videos. See the complete range in our film  
library. [www.youtube.com/c/ashfordnz](http://www.youtube.com/c/ashfordnz)



New stockist enquiries welcome  
Australia 1 800 653 397 New Zealand 0508 459 459  
To locate your local stockist visit our website  
[www.ashford.co.nz](http://www.ashford.co.nz)



Join us on facebook. Search:  
Ashford Wheels & Looms

**ashford**  
WHEELS & LOOMS